

**Neptune, Pacific and Gulf cookers, grills and hobs solely distributed through Bainbridge Marine.**

A range of cookers and hobs specifically designed to meet the needs of the boating and leisure industries.



- All burners are protected by flame failure device.
- Thermostat controlled oven.
- Grill has its own separate compartment.
- Safety catch on oven door that can be opened with one hand
- Integral pressure test point
- Oven door with see-through window
- Built in the UK

# 5000 Series Cookers and Hobs - Specifications

- Overall stainless steel construction
- Thermostat controlled oven
- Spark ignition on all burners
- Gimbals & pan clamps supplied as standard
- 2 or 3 burner hob
- S/S oven door, with transparent window
- Vitreous enamelled oven interior
- Flame failure safety device on all burners
- Supplied with Grill Pan and Gimbal Lock



LE60102



LE60104



LE60106



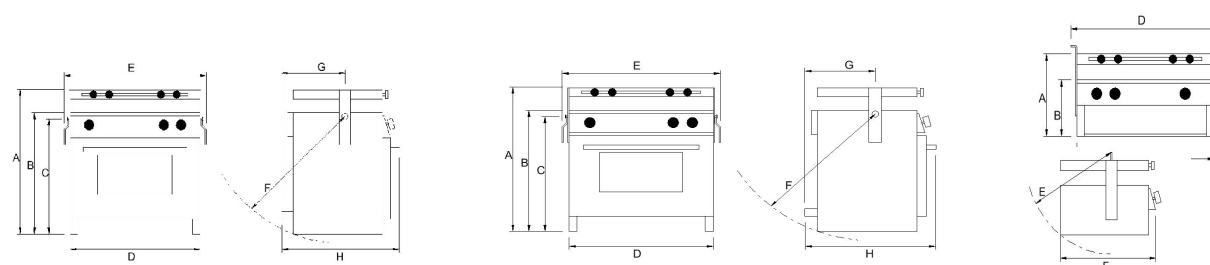
LE60103



LE60105

	NEPTUNE 5000 3 burner hob Cooker, Oven, Grill	NEPTUNE 5000 2 burner hob Cooker, Oven, Grill	PACIFIC 5000 3 burner hob Cooker, Oven,	PACIFIC 5000 2 burner hob Cooker, Oven	NEPTUNE 5000 3 burner hob Cooker, Grill
--	---	---	---	--	---

Part Number	LE60102	LE60103	LE60104	LE60105	LE60106
Hob Burners Heat Input	2 x 2 kW + 1 x 1 kW	1 x 2 kW + 1 x 3 kW	2 x 2 kW + 1 x 1 kW	1 x 2 kW + 1 x 3 kW	2 x 2 kW + 1 x 1 kW
Heat Input	Oven 1.40 kW + Grill 1.40 kW		Oven 1.40 kW		Grill 1.40 kW
Useful (Working) Oven Volume	24.5 L	24.45L	24.5 L	24.5 L	-
Oven Dims: (Useful Volume) Width x Depth x Height	40 x 25.6 x 24 cm	40 x 25.6 x 24 cm	40 x 25.6 x 24 cm	40 x 25.6 x 24 cm	-
Weight	28.5 kg	28.5 kg	19 kg	19 kg	8 kg
Gimbals & Pan Clamps Included	Yes	Yes	Yes	Yes	Yes
Oven Shelf W/Adjustable Height	Yes	Yes	Yes	Yes	No
Teflon Tray for Oven Baking	No	No	Yes	Yes	No
Vitreous Enamelled Grill Pan	Yes	Yes	No	No	Yes



Part Number	LE60102 / LE60103	LE60104 / LE60105	LE60106
A Height from base to fiddle rail	620 mm	490 mm	265 mm
B Height from base to pan support	570 mm	435 mm	220 mm
C Height from base to gimbal bracket	550 mm	415 mm	295 mm
D Cooker width without gimbals	500 mm	500 mm	500 mm
E Cooker width with gimbals	520 mm	520 mm	520 mm
F Gimbaling arc	590 mm	460 mm	350 mm
G Distance from rear of cooker to gimbal point	245 mm	240 mm	220 mm
H Cooker depth - front to back	460 mm	460 mm	420 mm
Minimum space required when heeling at 30°	585 x 430 mm Height x Depth	470 x 375 mm Height x Depth	340 x 260 mm Height x Depth

# 4500 Series Cookers and Hobs - Specifications

- Overall stainless steel construction
- Thermostat controlled oven
- Spark ignition on all burners
- S/S oven door, with transparent window
- Vitreous enamelled oven interior
- Flame failure safety device on all burners
- Fast burner (3 kW) as standard
- Models with grill are supplied with a grill pan



LE60108



LE60109

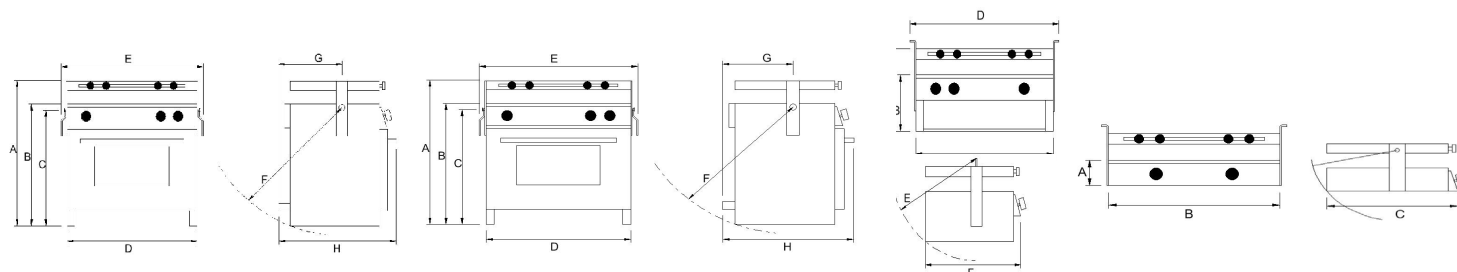


LE60110



LE60111

	NEPTUNE 4500 2 burner hob Cooker, Oven, Grill	PACIFIC 4500 2 burner hob Cooker, Oven	NEPTUNE 4500 2 burner hob Grill	GULF 4500 2 burner hob
<b>Part Number</b>	<b>LE60108</b>	<b>LE60109</b>	<b>LE60110</b>	<b>LE60111</b>
Hob Burners Heat Input	1 x 2 kW + 1 x 3 kW	1 x 2 kW + 1 x 3 kW	1 x 2 kW + 1 x 3 kW	1 x 2 kW + 1 x 3 kW
Oven Heat Input	1.30 kW	1.30 kW	-	-
Grill Heat Input	1.72 kW	-	1.72 kW	-
Useful (working) Oven Volume	19.8 L	19.8 L	-	-
Oven Dims: (Useful Volume) Width x Depth x Height	36 x 25 x 22 cm	36 x 25 x 22 cm	-	-
Weight	18.5 kg	14.7 kg	5.8 kg	2.8 kg
Oven Shelf W/Adjustable Height	Yes	Yes	No	No
Teflon Tray for Oven Baking	No	Yes	No	No
Vitreous Enamelled Grill Pan	Yes	No	Yes	No



Part Number	LE60108	LE60109	LE60110	LE60111
A Height from base to fiddle rail	560 mm	485 mm	245 mm	150 mm
B Height from base to pan support	505 mm	425 mm	190 mm	110 mm
C Height from base to gimbal bracket	475 mm	395 mm	250 mm	178 mm
D Cooker width without gimbals	450 mm	450 mm	450 mm	450 mm
E Cooker width with gimbals	470 mm	470 mm	485 mm	485 mm
F Gimbaling arc	510 mm	435 mm	310 mm	255 mm
G Distance from cooker to gimbal fixture	225 mm	225 mm	210 mm	210 mm
H Cooker depth - front to back	420 mm	420 mm	400 mm	400 mm
Minimum space required when heeling at 30°	520 x 410 mm Height x Depth	450 x 395 mm Height x Depth	320 x 285 mm Height x Depth	-

See the next page for Ceramic Hobs and Cooker Accessories

# Ceramic Hobs

Stylish, practical, reliable and easy to use ceramic hobs with 2, 3 or 4 zones!



**LE649463**

- Max. Heat input 2.4 kW
- 2 x 1200 w elements
- Bevelled Glass Edge
- Hob Hot Indicator
- Available in 230V-240V & 120V



**LE50360**

- Max Heat input 2.4 kW
- 2 x 1200 w elements
- Heat Booster feature
- Bevelled Glass Edge
- Hob Hot Indicator
- Child Safety Lock
- LED On/Off Indicator
- Available in 230V-240V & 120V



**LE50364**

- Max. Heat input 3.6 kW
- 3 x 1200 w elements
- Heat Booster feature
- Bevelled Glass Edge
- Hob Hot Indicator
- Child Safety Lock
- LED On/Off Indicator
- Slider Touch Control
- Multiple Timers
- Available in 230V-240V



**LE50366**

- Max. Heat input 5.7 kW
- 2 x 1200 w , 1 x 1500 w , 1 x 1800 w Elements
- Hob Hot Indicator
- Bevelled Glass Edge



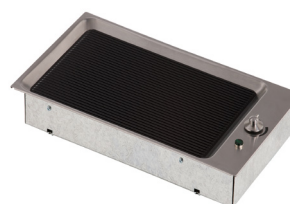
**LE49464**

- Max. Heat input 5.6 kW
- 2 x 1200 w , 1 x 1500 w , 1 x 700-1700 w Element
- Heat Booster feature
- Bevelled Glass Edge
- Hob Hot Indicator
- Child Safety Lock
- LED On/Off Indicator
- Slider Touch Control
- Multiple Timers
- Available in 230V-240V



**LE186329**

- Max. Heat input 4.8 kW
- 4 x 1200 w elements
- Heat Booster feature for
- Bevelled Glass Edge
- Hob Hot Indicator
- Child Safety Lock
- LED On/Off Indicator



**LE60112**

- 505 x 295 x 70 mm
- Max. Heat input 1.3 kW
- 1 x 1300W
- Cook directly onto the glass
- Built in spillage tray to contain any grease & fat
- Stainless steel surround
- Available in 230V-240V & 120V

## Vitreoceramic Griddle

Flushmount vitreoceramic griddle ideal for exterior use. With a recessed grilling area to collect excess cooking fat, this griddle is easy to clean.

	Part No.	Power	Overall Dimensions: L x W x Th mm	Built In Dimensions: L x W x Th mm
<b>2 Zone Rotary Control</b>	<b>LE49463</b>	2 x 1200 W	510 x 280 x 45	490 x 260 x 45
<b>2 Zone Touch Control</b>	<b>LE50360</b>	2 x 1200 W	510 x 310 x 45	490 x 290 x 45
<b>3 Zone Touch Control</b>	<b>LE50364</b>	3 x 1200 W	515 x 480 x 45	495 x 460 x 45
<b>4 Zone Rotary Control</b>	<b>LE50366</b>	1 x 1800 W, 1 x 1500 W, 2 x 1200 W	580 x 510 x 45	560 x 490 x 45
<b>4 Zone Touch Control</b>	<b>LE49464</b>	1 x 1800 W, 1 x 1500 W, 2 x 1200 W	580 x 510 x 45	560 x 490 x 45
<b>4 Zone Compact Touch Control</b>	<b>LE186329</b>	4 x LE186329	553 x 477 x 45	533 x 457 x 45
<b>Vitreoceramic Griddle</b>	<b>LE60112</b>	1 x 1300 W	505 x 295 x 45	490 x 280 x 45

## Galley Accessories

Part No.	Description
LE10656	HD Sea Rail and Gimbals
LE17464	Lightweight Pan clamps and gimbals (4500 Oven only)
LE17474	Lightweight Pan clamps and gimbals (4500 Hob only)

**Order online!**  
**[www.bainbridgemarine.co.uk](http://www.bainbridgemarine.co.uk)**

