



## MODEL 7005 2-6 in<sup>3</sup> VARIABLE DELIVERY HELM PUMP

This pump features adjustable volume in a compact design. Adjustment from 2-6 in<sup>3</sup> per turn is easily accomplished from the outside. A ball bearing and two thrust bearings provide smooth operation and long life. A lock valve installed on the back of the helm pump prevents rudder feedback and also allows installation of multiple control stations. The pump is normally supplied in its die cast bronze finish. It can, however, be ordered in a black epoxy finish.

Materials: Housing and rotor are die-cast silicon bronze. Pistons and pintol are hardened and ground steel. Pump shaft and hardware are stainless steel.

Max. working pressure: 1000 psi (69 bar)

Weight: 23 lbs. (10.4 kg)

### ORDERING INFORMATION

- A – With cast bronze finish (standard)
- B – With black epoxy finish
- L – With long shaft (for behind console mount)
- N – With short shaft (for through console mount)
- P – With porting block only (no lock valve)
- T – With tapered shaft
- V – With vent plug

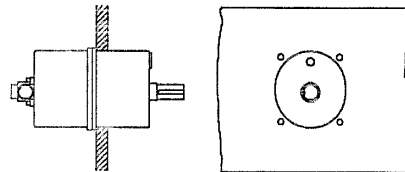
Note: An adaptor plate to simplify installation of the helm pump is available. It can be installed on either side of the console.

Ordering number:

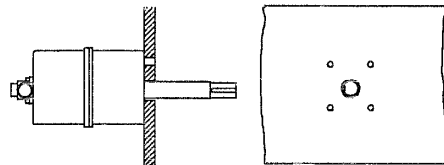
7005-0011A (cast bronze finish)

7005-0011B (black epoxy finish)

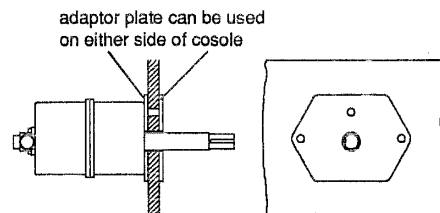
#### Through console installation with short shaft



#### Behind console installation with long shaft

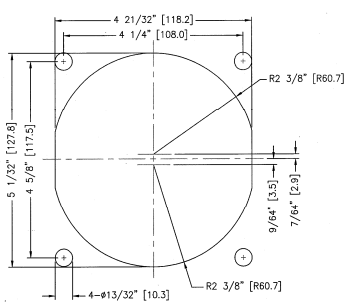
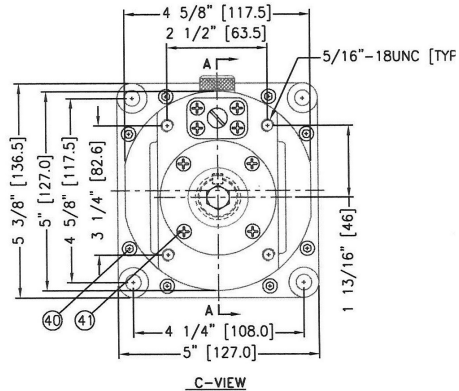
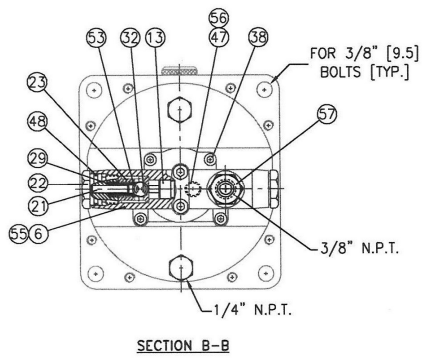
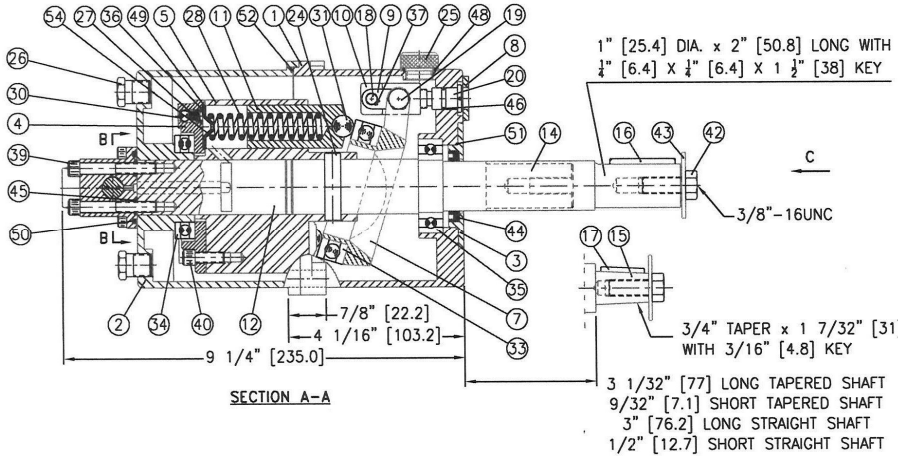


#### Installation with adaptor plate



# DIMENSIONS AND PARTS

## MODEL 7005



MODEL 7005			
ITEM	QTY	PART NO.	DESCRIPTION
1	1	7005-0001	Front Housing
2	1	7005-0002	Rear Housing
3	1	7005-0003	Front Seal Retainer
4	1	7005-0004	Check Valve Housing
5	1	7005-0005	Rotor
6	1	7005-0006	Lock Valve Body
7	1	7005-0007	Thrust Bearing Retainer
8	1	7005-0008	Adjustment Cover Plate
9	2	7005-0009	Link
10	1	7005-0010	Adjustment Block
11	7	7005-0012	Piston
12	1	7005-0013	Pintle
13	1	7005-0014	Shuttle
14	1*	7005-0015	Straight Shaft (short)
14	1*	7005-0016	Straight Shaft (long)
15	1*	7005-0017	Tapered Shaft (short)
15	1*	7005-0018	Tapered Shaft (long)
16	1*	7005-0019	Key (straight shaft)
17	1*	7005-0020	Key (tapered shaft)
18	1	7005-0021	Snap Ring Pin
19	2	7005-0022	Shoulder Bolt
20	1	7005-0023	Adjusting Screw
21	2*	7005-0024	Pin
22	2	7005-0025	End Cap
23	2*	7005-0026	Ball Seat
24	1	7005-0027	Pin
25	1*	7005-0028	Filler Plug
25	1*	7005-0029	Vented Filler Plug
25	1*	7005-0030	Filler Plug with Pipe Thread
26	2	7005-121B	Hex Plug
27	7	1201-0163	Spring
28	7	1201-0164	Spring
29	2*	1201-0165	Spring
30	7	1301-0108	Ball
31	7	1301-0116	Ball
32	2*	1301-0112	Ball
33	1	7005-51112	Thrust Bearing
34	1	7005-51108	Thrust Bearing
35	1	7005-6006	Ball Bearing
36	7	1029-6037	Self Locking Retaining Ring
37	2	1029-1025	Snap Ring Pin
38	4	1002-0808	Socket Hd Cap Screw
39	2	1002-1028	Socket Hd Cap Screw
40	15	1002-1010	Socket Hd Cap Screw
41	8	1009-0806	Flat Hd Screw
42	1	1001-1216	Hex Hd Screw
43	1	1023-0248	Washer
44	1	7005-11130	Front Seal
45	2	1101-0010	"O" Ring
46	1	1101-0012	"O" Ring
47	2	1101-0011	"O" Ring
48	3	1101-0017	"O" Ring
49	7	1101-0022	"O" Ring
50	1	1101-0029	"O" Ring
51	1	1101-0032	"O" Ring
52	1	1101-0158	"O" Ring
53	2*	7005-0031	Spring Seat (lock valve)
54	7	7005-0032	Spring Seat
55†	1	7005-0033	Block valve
56†	2	1101-0014	"O" Ring
57	2	7039-0017	Fitting
Optional	1	7005-0011	Adaptor Plate

Thread size for  
 Helm lines is #6 ORB- 3/8" NPT fitting  
 Connecting holes is 1/4" NPT  
 Filler hole is 5/8" UNF

