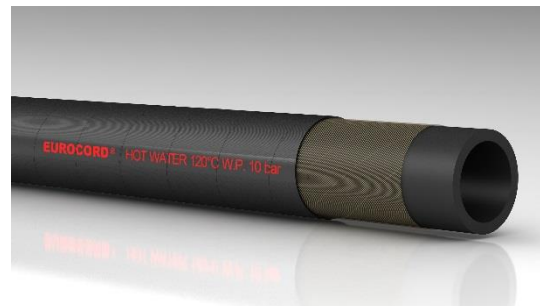


EUROCORD®

ACQUA CALDA/120°C



TUBE: EPDM rubber.

REINFORCEMENT: high tensile synthetic textile.

COVER: abrasion, heat, ozone and weather resistant, EPDM rubber.

APPLICATION: for delivery of hot water with very light chemical content in industrial applications

SURFACE: smooth with fabric impression.



SEELE: EPDM-gummi.

EINLAGE: hochzugfeste synthetische textileinlage.

DECKE: EPDM, abriebfest, hitze-, ozon- und witterungsbeständig, glatt.

ANWENDUNG: geeignet als druckschlauch im industrie- und automobilbereich für flüssige medien mit anteilen von leichten chemikalien.

oberfläche: stoffimpression



SUSTRATO: caucho en EPDM.

REFUERZO: inserciones con alta resistencia.

COBERTURA: caucho en EPDM, resistente a la abrasión, al calor, al ozono y a los agentes atmosféricos.

USO: para suministro de agua caliente también con contenidos químicos muy ligeros en la industria.

SUPERFICIE: con impresión de tela











TUBE: caoutchouc EPDM.

REINFORCEMENT: insertion textile haute tenacite,

REVETEMENT: caoutchouc EPDM, resistant a l'abrasion, a la chaleur, a l'ozone et aux agents atmospheriques.

APPLICATION: pour refoulement d'eau chaude meme avec un additif chimique a faible concentration, dans l'industrie.

SURFACE: impression textile

							
mm	mm	bar	bar	bar	gr/mt	mm	mt
10	20	10	30	-	346	100	40
12	22	10	30	-	392	120	40
13	23	10	30	-	415	130	40
15	25	10	30	-	461	150	40
16	26	10	30	-	484	160	40
17	27	10	30	-	507	170	40
18	28	10	30	-	529	180	40
19	30	10	30	-	619	190	40
20	30	10	30	-	575	200	40
22	32	10	10	-	550	220	40
25	35	10	30	-	667	250	40
28	38	10	30	-	782	270	40
30	41	10	30	-	897	300	40
32	45	10	30	-	1162	320	40
35	48	10	30	-	1260	350	40
38	51	10	30	-	1329	380	40
40	54	10	30	-	1423	400	40
45	61	10	30	-	1864	450	40
50	68	10	30	-	2231	510	40
60	82	10	30	-	3443	600	40



-40°C / +125°C -40°F / +257°F

NORMS, NORMEN. NORMAS, NORMES: ISO 1307

MARKING / BESCHRIFTUNG / MARCATURA / MARQUAGE: EUROCORD® HOT WATER 120°C W.P. 10 BAR

SATI GROUP S.P.A.

Via C. Bonazzi, 24 - 40013 CASTEL MAGGIORE (BO) - ITALY

Tel. +39.051.700321 - Fax +39.051.701350

E-mail: commerciale@satigroup.it

web: www.satigroup.it