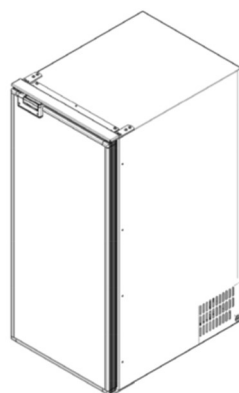


Cruise

CR 65 / CR 85



TROUBLE SHOOTING

CRUISE

Index

LIST OF NECESSARY TOOLS _____	3
HOW TO DETECT THE TYPE OF FAULT _____	4
ERROR E1: Battery protection cut-out _____	7
ERROR E2: Fan over-current cut-out _____	8
ERROR 3: Motor start error _____	9
ERROR E4: Minimum motor speed error _____	10
ERROR E5: Thermal cut-out of electronic unit _____	11
HOW TO REPLACE THE THERMOSTAT _____	12
HOW TO REPLACE THE FAN _____	18
HOW TO REPLACE THE ECU _____	19
HOW TO REPLACE THE DOOR PANEL _____	20
HOW TO REPLACE THE DOOR _____	23
HOW TO REPLACE THE LIGHT BULB _____	24
HOW TO REPLACE THE FREEZER DOOR _____	25
HOW TO REVERSE THE OPENING DIRECTION _____	26

LIST OF NECESSARY TOOLS

Before starting any analysis activity or any replacement of defective components, be sure to have the followings tools:

- Adjustable power supply;
- Voltage Tester;
- Phillips head screwdrivers;
- Wire to make bridge within 2 connectors;
- Wire Cutter/scissors;
- Led with positive and negative leads;
- Socket Wrench;

HOW TO DETECT THE TYPE OF FAULT

NON-FLASHING ERROR

There are also errors that aren't detected by the ECU.

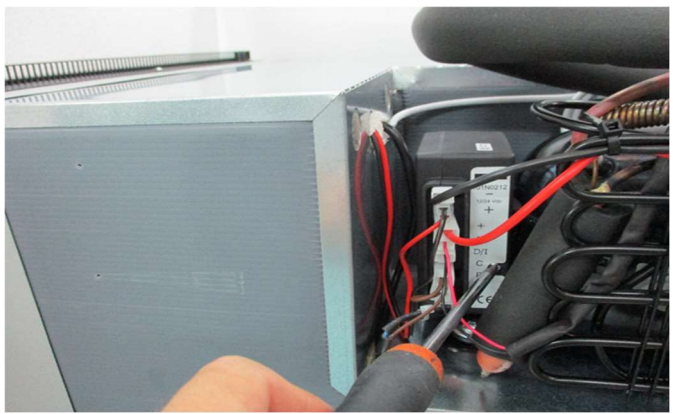
NO POWER SUPPLY: Check the connection between the power supply and the battery. Check if the cable's length is correct (see the instruction manual)

FAULTY THERMOSTAT: You need to disconnect the wire from the C, P and T plug of the ECU, then make a bridge between C and T. If the refrigerator operates the thermostat is faulty and need to be replaced. Otherwise the ECU need to be replaced.

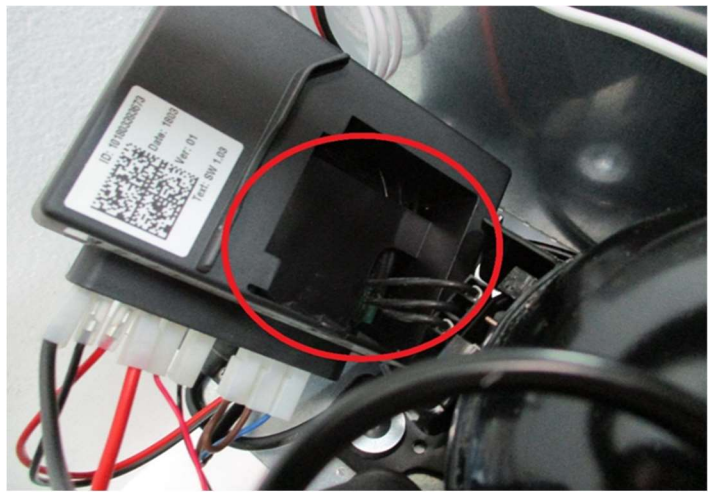
THE MOTOR OPERATES BUT THE REFRIGERATOR DOES NOT COOL: Check if the evaporator/freezer has not been punctured or damaged by user. Otherwise let check the refrigerator from a service station.

FLASHING ERRORS

This refrigerator is not equipped with display, so you need to unscrew the ECU and control the number of flashes. You may detect errors from the ECU. Each error corresponds to a number of flashes from a led inside the ECU:



Unscrew the bolt fixing the ECU, and move the ECU

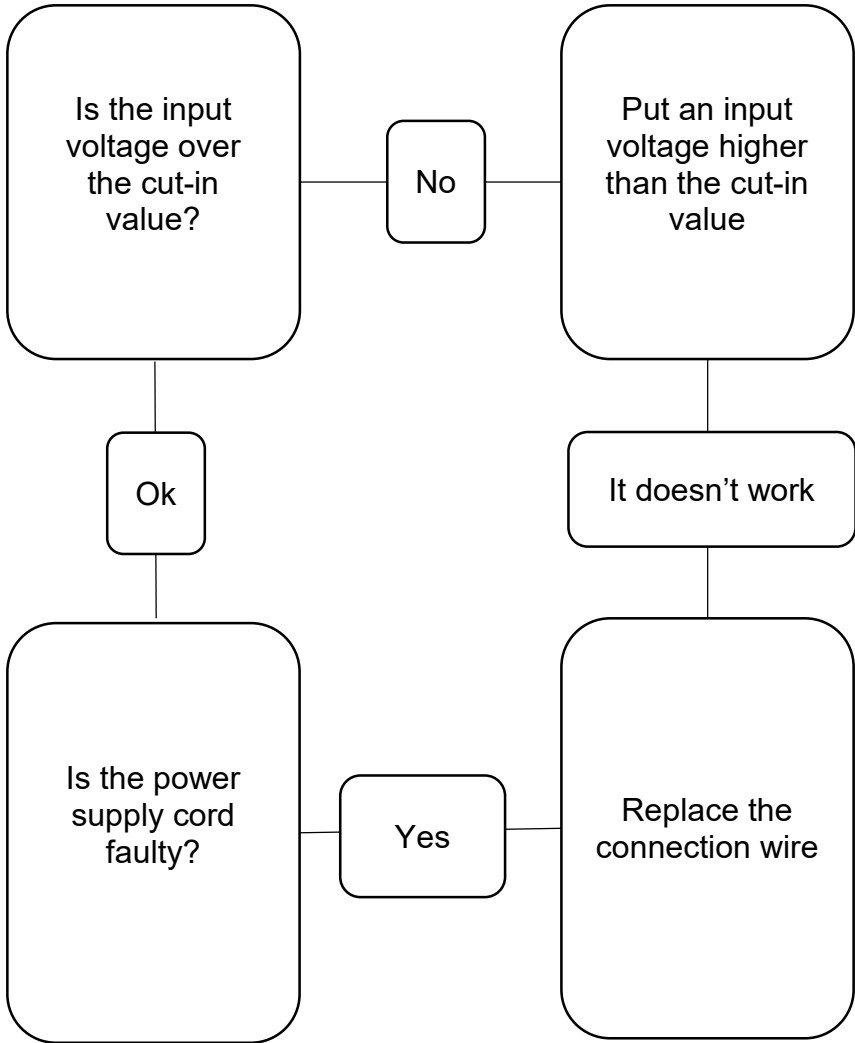


Control in the highlighted area to see the number of flashes

Kind of faults:

ERROR CODE	ERROR TYPE
E1	Battery protection cut-out (The voltage is outside the cut-out setting).
E2	Fan over-current cut-out (The fan loads the electronic unit with more than $1A_{peak}$).
E3	Motor start error (The rotor is blocked or the differential pressure in the refrigeration system is too high (>5 bar)).
E4	Minimum motor speed error (If the refrigeration system is too heavily loaded, the motor cannot maintain minimum speed 1,850 rpm).
E5	Thermal cut-out of electronic unit (If the refrigeration system has been too heavily loaded, or if the ambient temperature is high, the electronic unit will run too hot).

ERROR E1: Battery protection cut-out



ERROR E2: Fan over-current cut-out

This error is caused by an over-current that arrived at the fan. In this case you must replace the fan (see “How to replace the fan”).

ERROR 3: Motor start error

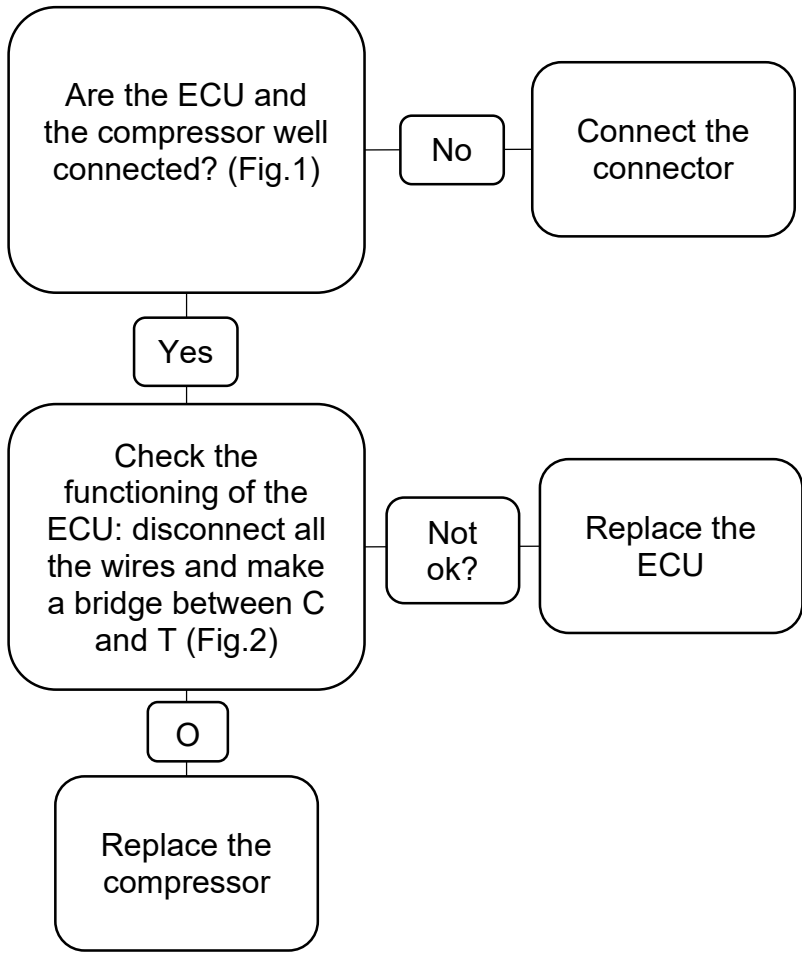
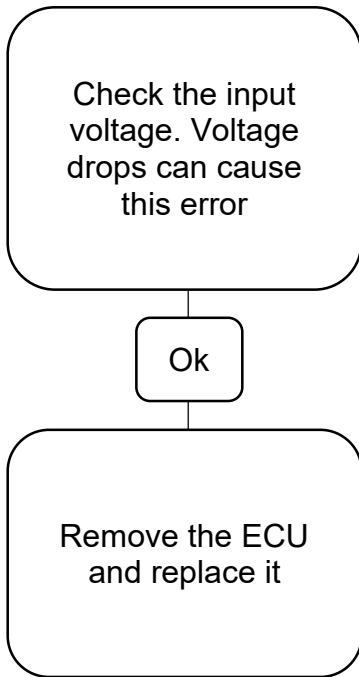


Fig. 1

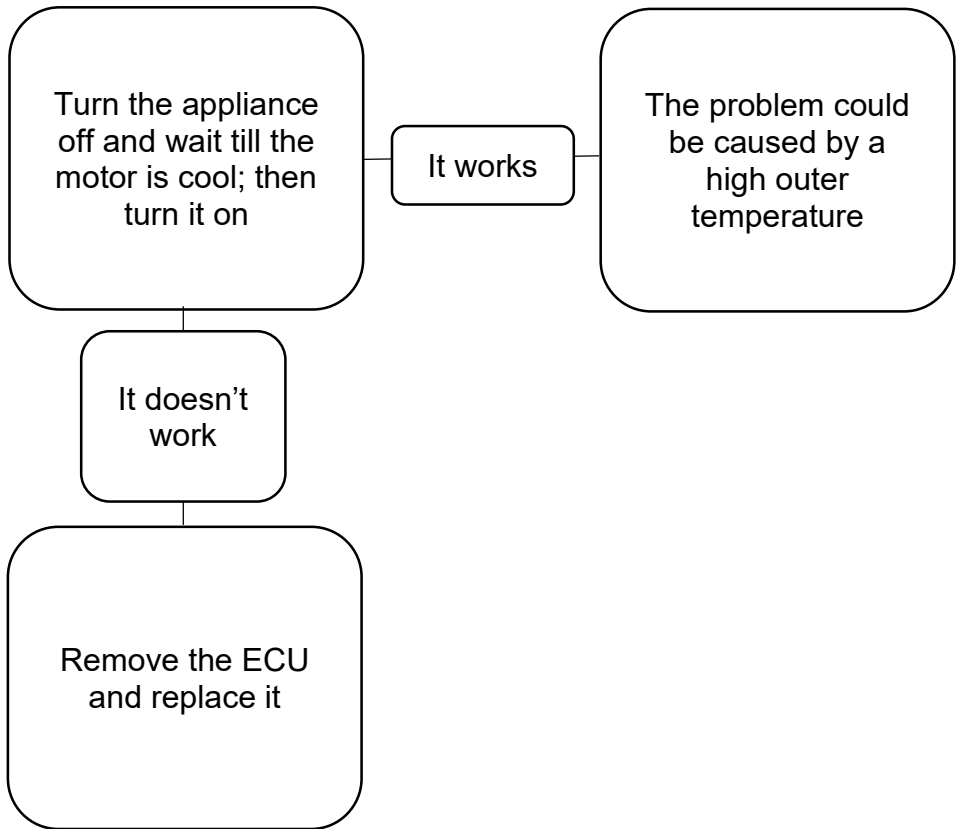


Fig. 2

ERROR E4: Minimum motor speed error



ERROR E5: Thermal cut-out of electronic unit



HOW TO REPLACE THE THERMOSTAT



1. Unscrew the bolt fixing the thermostat bulb



2. Remove the drip tray



3. Remove it by bending it as shown by pulling with both thumbs from the bottom sides left/right and pulling with the other fingers from the inside



3. Unscrew the 2 bolts fixing the freezer



5. Unscrew the 2 bolts fixing the thermostat



6. Unscrew the light bulb and remove the thermostat knob



7. Unscrew the grid (2 screws)



8. Unscrew the lock nut



9. Unscrew the protection box (2 bolts)

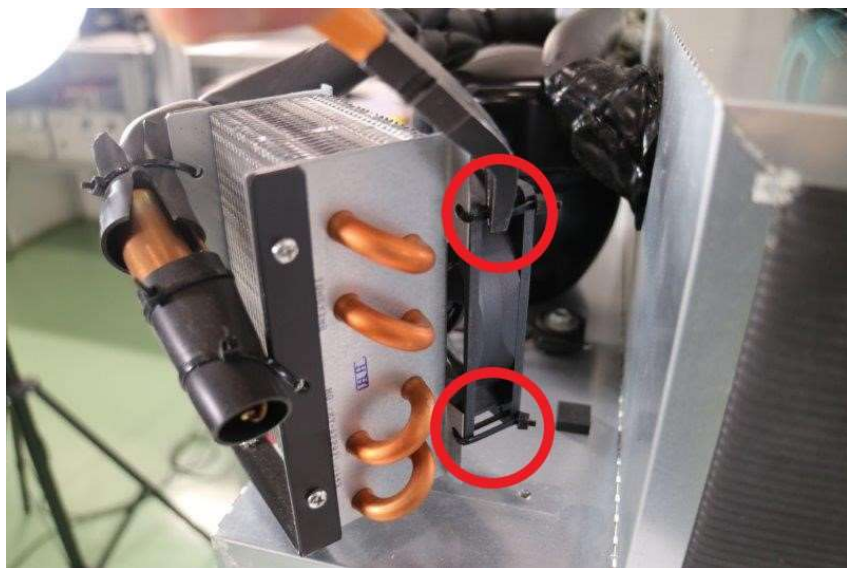


10. Disconnect the connection wires from the thermostat and pull the thermostat wire to remove it. Reverse the procedure to replace it

HOW TO REPLACE THE FAN



Remove the 2 screws that hold the condenser in place



Cut the 4 plastic ties that hold the fan in place and replace it with a new one

HOW TO REPLACE THE ECU



Unscrew the bolt fixing the ECU, disconnect all the wires from the ECU and remove it

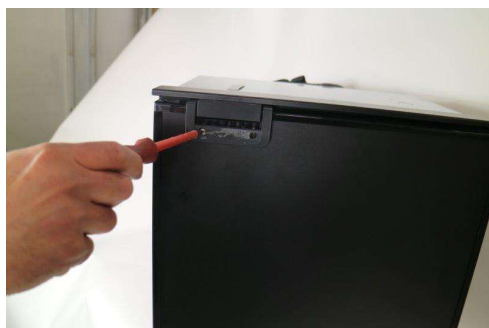
HOW TO REPLACE THE DOOR PANEL



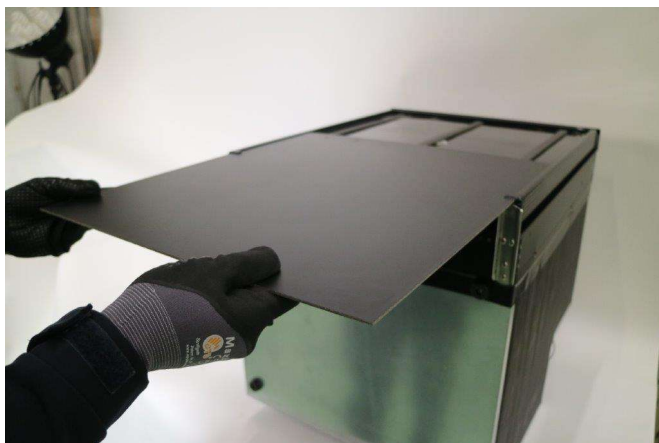
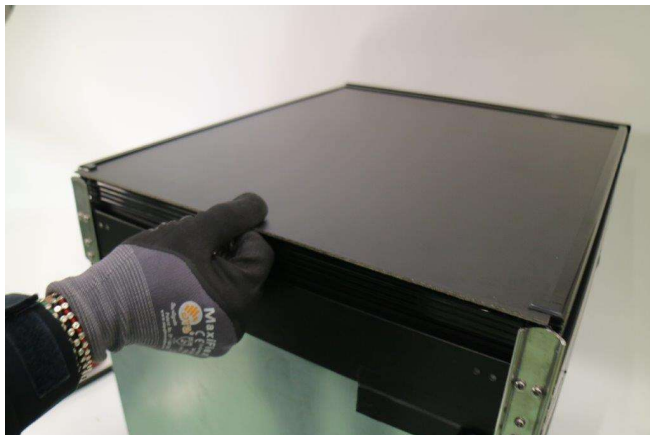
1. Lift the bottom frame upwards with a screwdriver as shown (NOT FROM THE SIDE)



2. Use a cutter to remove the sticker with the logo and reveal the screw



3 Unscrew the handle (2 screws) and remove it



4. Remove the panel pulling it gently and reverse the procedure to replace it

HOW TO REPLACE THE DOOR



1 Unscrew the 2 hinges from the bottom (8 screws), lift the door from the handle and unthread it



HOW TO REPLACE THE LIGHT BULB

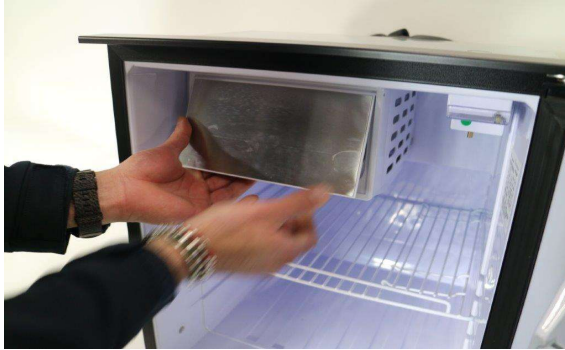


1. Press the button and pull down the light bulb



2. Disconnect the wire and reverse the procedure to replace it

HOW TO REPLACE THE FREEZER DOOR

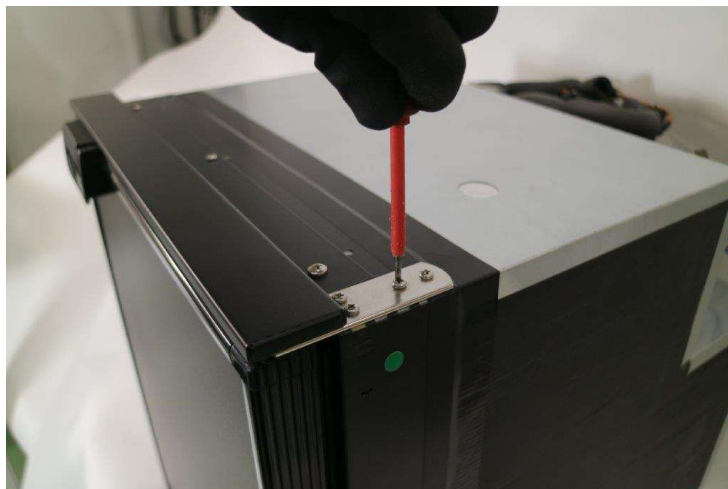


Remove it by bending it as shown by pulling with both thumbs from the bottom sides left/right and pulling with the other fingers from the inside

HOW TO REVERSE THE OPENING DIRECTION



1. Unscrew the 2 hinges from the bottom (8 screws), lift the door from the handle and unthread it



2. Replace the top hinge from one side to the other, reinsert the door and reverse the procedure
3. Install the hinges in the opposite side as well as the handle

Indel B S.p.a.

Via Sarsinate, 27

47866 - Sant'Agata Feltria (RN), Italia

T. 0541 848 711 - F. 0541 848 741

info@indelb.com

For sales and service in USA:

Indel B North America

100 Triport Circle

Georgetown, KY 40324

Ph 502.863.0373

infoUS@indelB.com

OFF.INDELB.COM