

Jet Thruster

DOCK YOUR
BOAT EASILY

**KEEP THIS MANUAL
ONBOARD!**

Exploded views Jet Thruster systems

Jet Thruster Single & Combi

2018



OEM

**RETRO
FIT**

Jet Thrusters:
JT-30 / JT-50 / JT-70 / JT-90

D-038-01

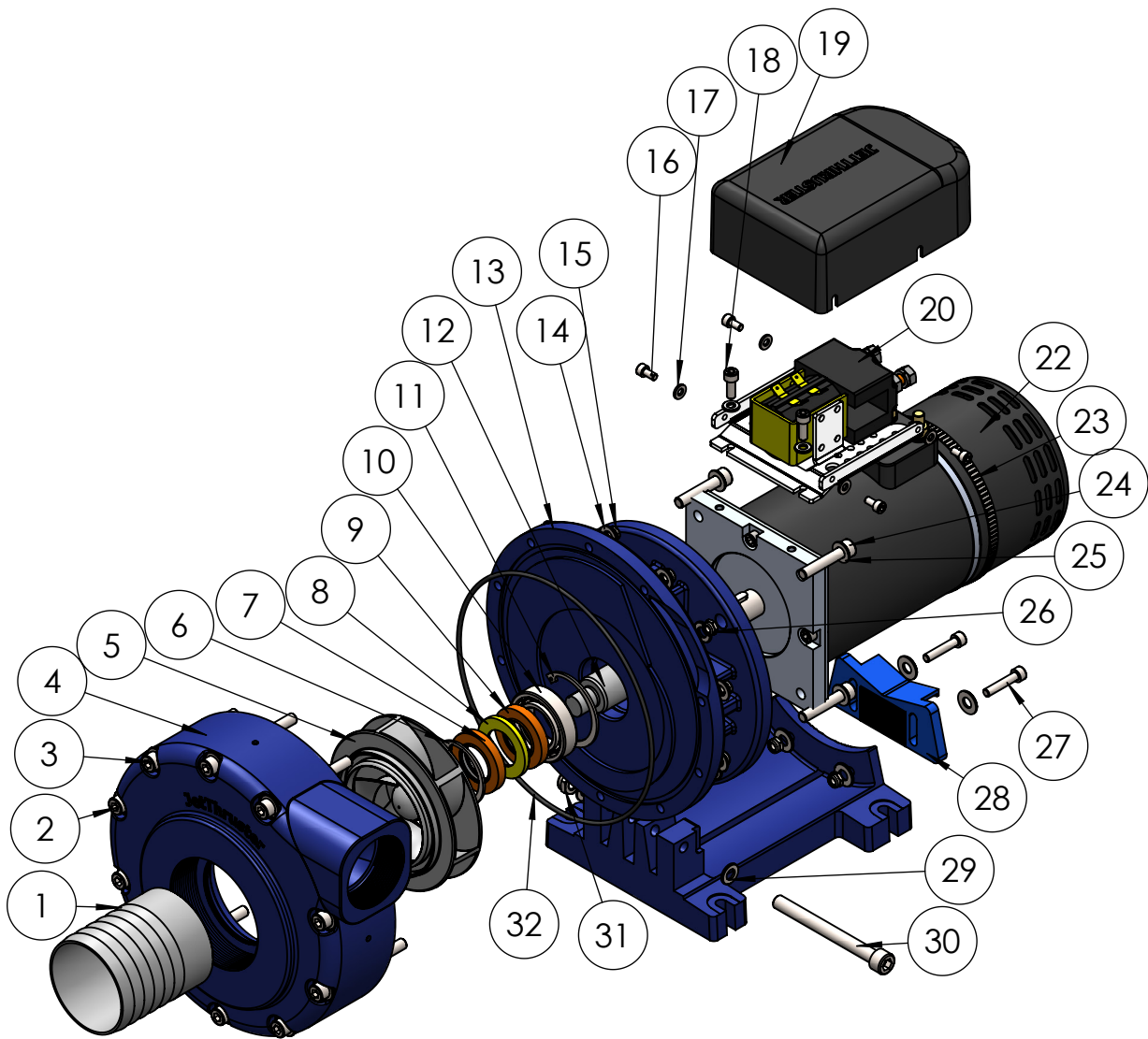
All our products are manufactured according to CE regulations.
We keep the rights to change descriptions, graphs or statements,
which are required for technical development of our Jet Thruster systems.



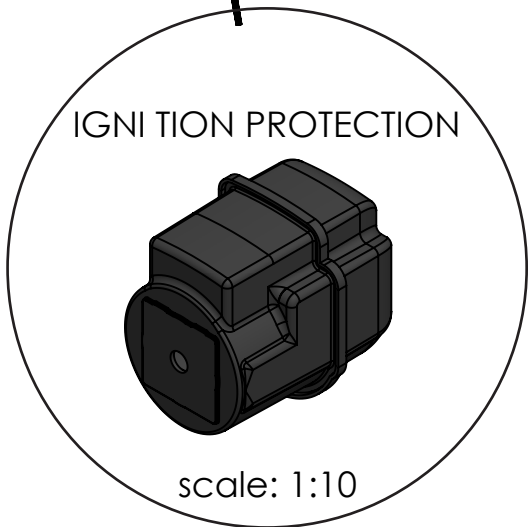
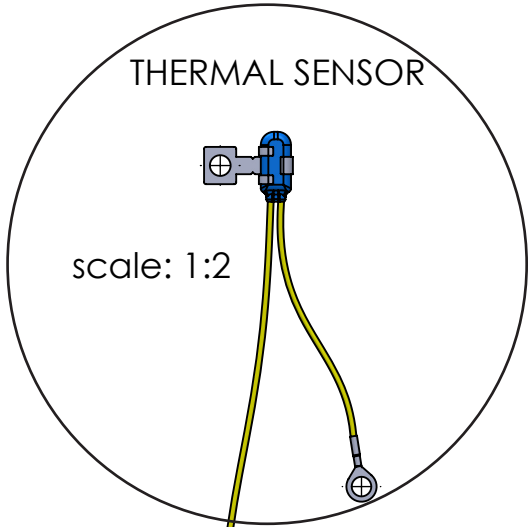
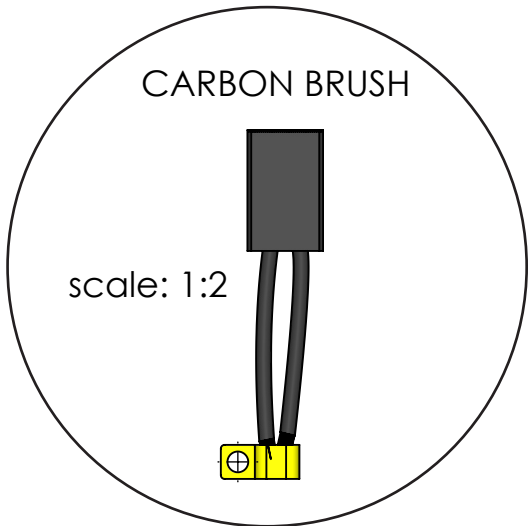
**HOLLAND
MARINE PARTS**

WE KEEP YOU MOVING!

JT-30-50 (3KW)



scale: 1:5



P-325-00	Brush for DC-Motor 3/3,85KW-12V	JT30
P-326-00	Brush for DC-Motor 6KW-12V	JT50
P-327-00	Brush for DC-Motor 6KW-24V	JT50
P-328-00	Brush for DC-Motor 11KW-24V	JT70
P-329-00	Brush for DC-Motor 15.5KW-24V	JT90

P-337-00	Thermal Sensor DC-Motor 3KW	JT30
P-338-00	Thermal Sensor DC-Motor 6KW	JT50
P-339-00	Thermal Sensor DC-Motor 11KW	JT70
P-335-00	Thermal Sensor DC-Motor 15.5KW	JT90
P-334-00	Thermal Sensor DC-Motor 3KW vapor proof	JT30

P-266-00	Ignition protection / IP Cover JT-30	JT30
P-267-00	Ignition protection / IP Cover JT-50	JT50

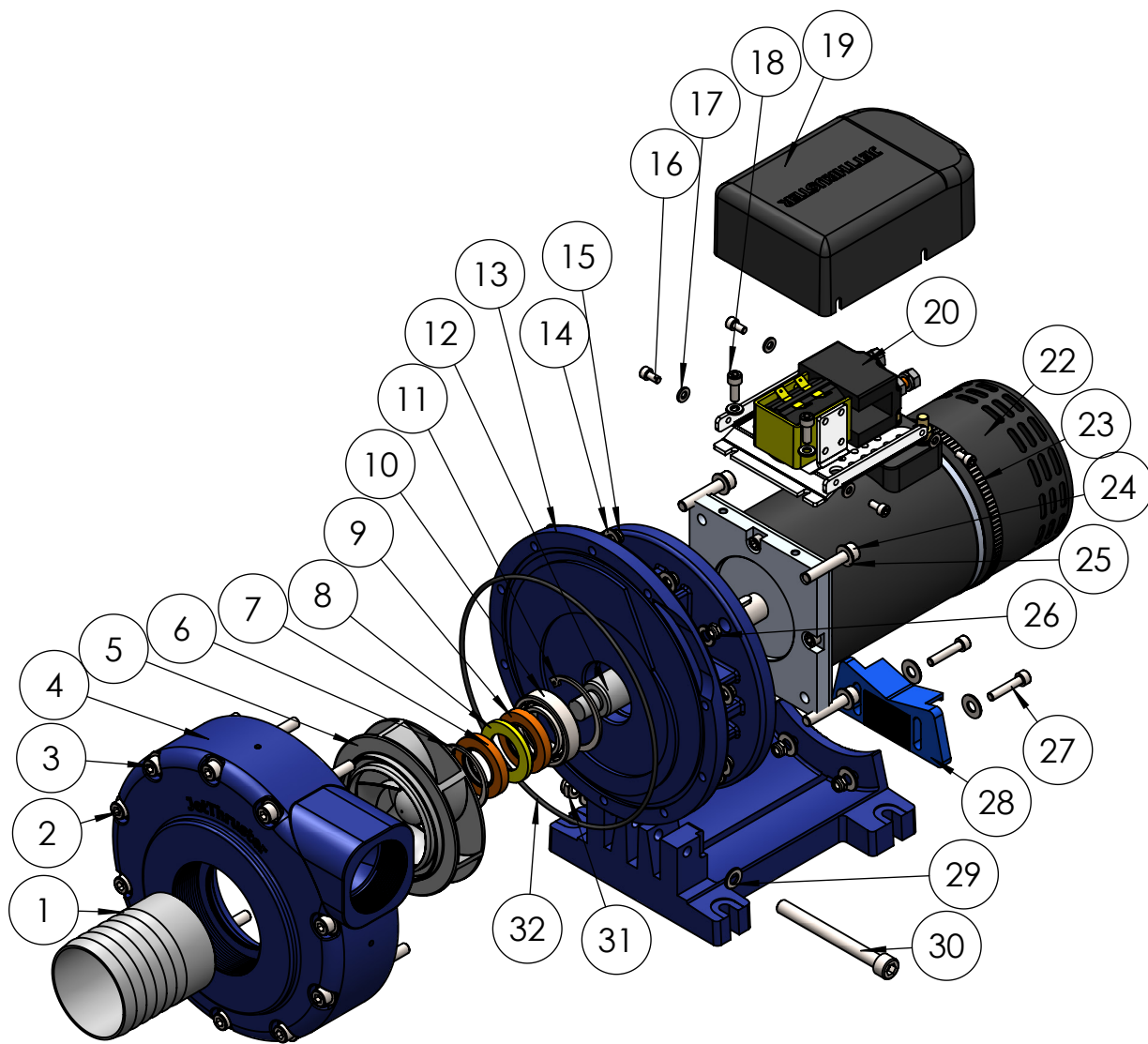
Pos.	Part NR	Description	QTY.
1	I-310-00	Hose Connector 2.5"/76m SS316	1
2	F-223-00	Inbusbout M6x80 DIN912	10
3	F-011-00	Carrosseriering dia.18/6	14
4	P-501-00	Pump Housing Compact	1
5	P-506-02	Impeller Compact SS	1
6	P-124-00	Circlip tbv Lipseal Gr1+Gr2	1
7	P-121-00	Lipseal OBC Gr1+Gr2	1
8	P-123-00	Ring tbv Lipseal Gr1+Gr2	1
9	P-120-00	Lipseal OAC Gr1+Gr2	1
10	P-106-00	Ball Bearing Pumpunit Gr1+Gr2	1
11	P-105-00	Circlip Ring for ball Bearing	1
12	P-505-00	Pumpshaft Compact	1
13	P-502-00	Bearing carrier Compact	1
14	F-004-00	Sluitring M6 DIN125A	12
15	F-103-00	Borgmoer M6 DIN985A	12
16	F-202-00	Inbusbout M5x10 DIN912	4
17	F-003-00	Sluitring M5 DIN125A	4
18	F-204-00	Inbusbout M6x16 DIN912	2
19	P-508-00	Cover for Actuatorplate Compact	1
20	P-511-00	DC Contactor Compact	1
21	P-509-00	Actuator Support JT30 Compact	1
22	P-313-00	DC-Motor EC3/1,2/29-12 with Studs	1
23	P-141-00	Huis tbv Slangklem	1
24	F-226-00	Inbusbout M8x40 DIN912	4
25	F-005-00	Sluitring M8 DIN125A	8
26	F-104-00	Borgmoer M8 DIN985A	4
27	F-205-00	Inbusbout M6x30 DIN912	2
28	P-504-01	Pump Bracket Adjusting plate	1
29	F-005-00	Sluitring M8 DIN125A	2
30	F-221-00	Inbusbout M8x100 DIN912	1
31	F-104-00	Borgmoer M8 DIN985A	1
32	P-514-00	O-Ring Bearing Carrier	1

UNLESS OTHERWISE SPECIFIED: DIMENSIONS ARE IN MILLIMETERS
 0.03 0.03 0.2 0.2 0.2 Ra 3.2
 ANGLES IN DEGREES - TOLERANCES ±0.2mm ±0.5° - BREAK ALL EDGES

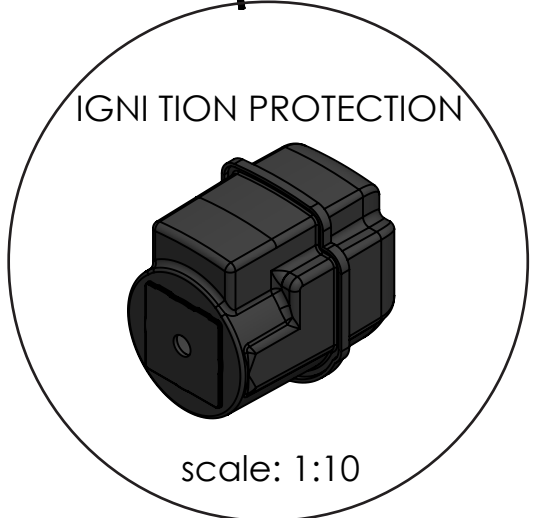
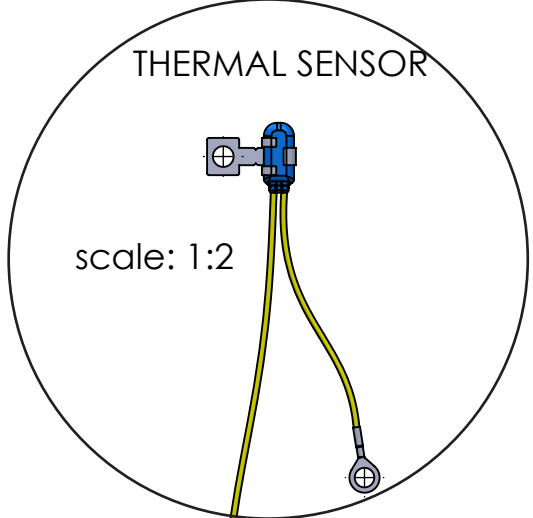
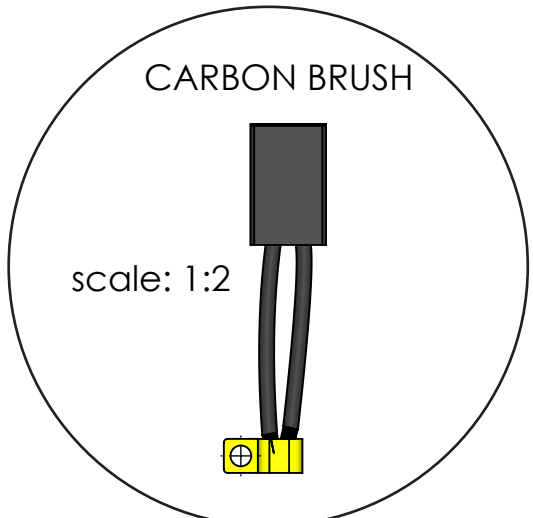
Jet Thruster	Drawn by : Toofan Pour	Part No./Note : JT-30-50-12v-Single
	Drawn date : 13-9-2017	Customer :
	Checked by :	Reference :
	Modified by : Toofan Pour	Weight in kg : 29kg
	Modified date : 22-6-2018	Material/Size :

A3 Do NOT Scale

JT-30-50 (3.85KW)



scale: 1:5



P-325-00	Brush for DC-Motor 3/3,85KW-12V	JT30
P-326-00	Brush for DC-Motor 6KW-12V	JT50
P-327-00	Brush for DC-Motor 6KW-24V	JT50
P-328-00	Brush for DC-Motor 11KW-24V	JT70
P-329-00	Brush for DC-Motor 15.5KW-24V	JT90

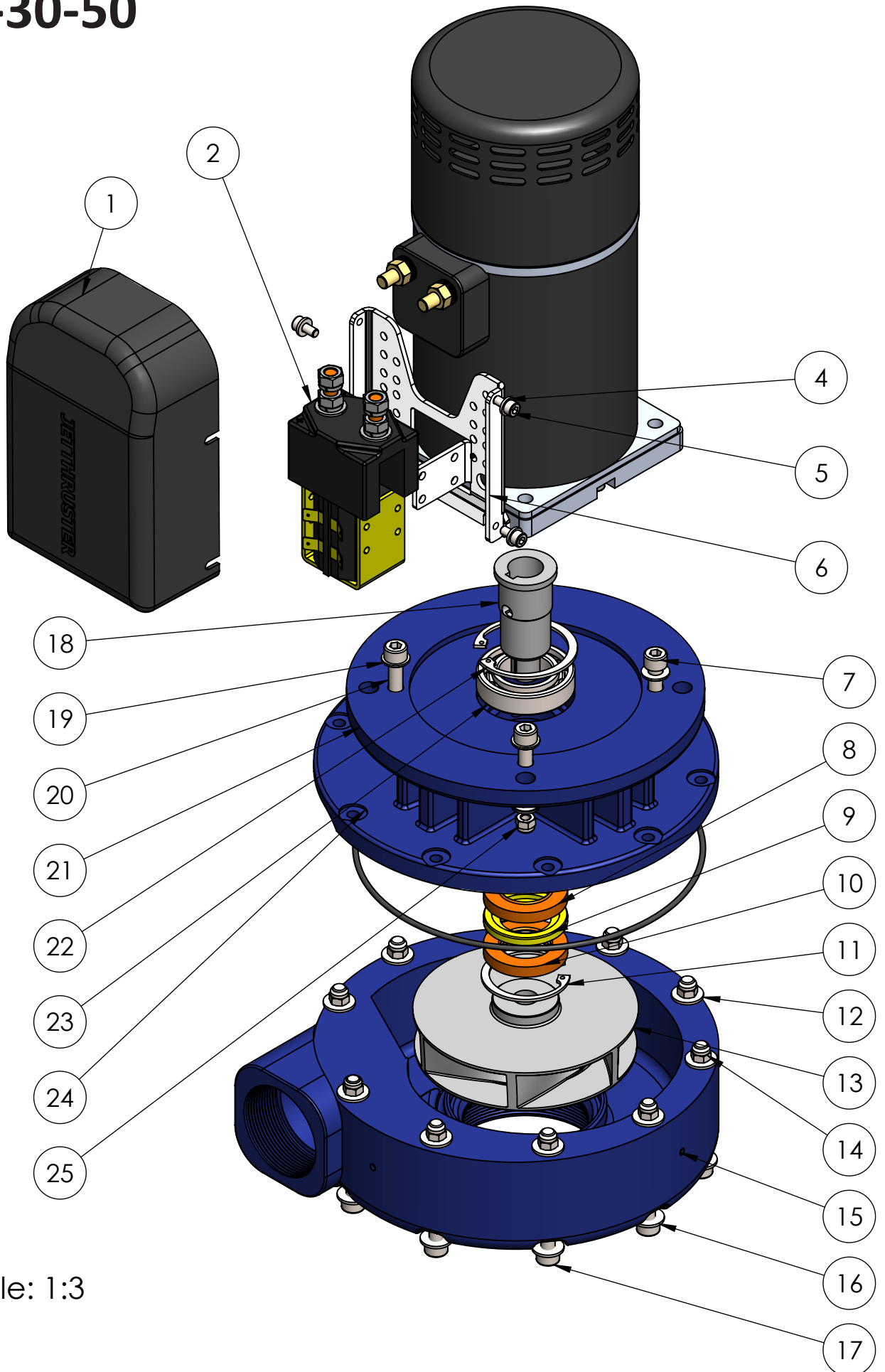
P-337-00	Thermal Sensor DC-Motor 3KW	JT30
P-338-00	Thermal Sensor DC-Motor 6KW	JT50
P-339-00	Thermal Sensor DC-Motor 11KW	JT70
P-335-00	Thermal Sensor DC-Motor 15.5KW	JT90
P-334-00	Thermal Sensor DC-Motor 3KW vapor proof	JT30

P-266-00	Ignition protection / IP Cover JT-30	JT30
P-267-00	Ignition protection / IP Cover JT-50	JT50

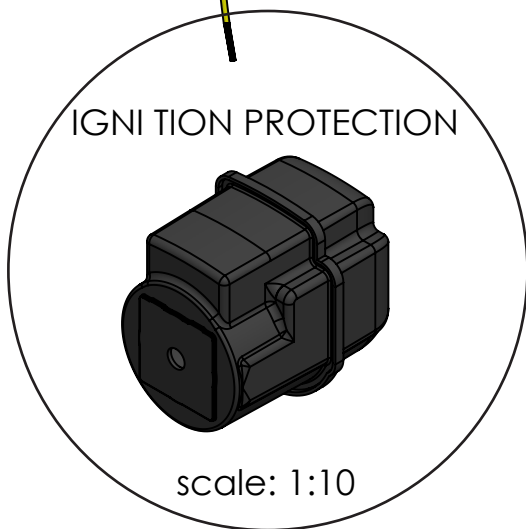
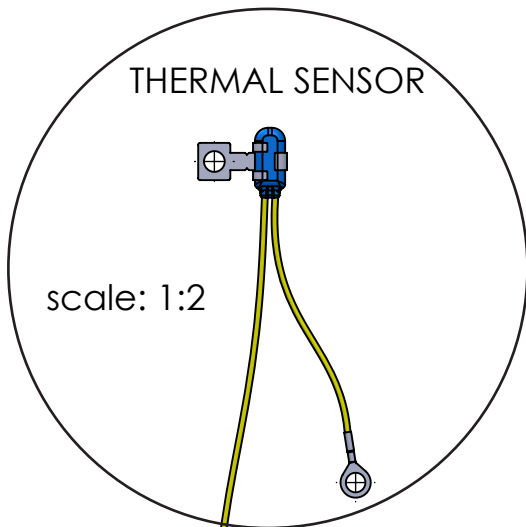
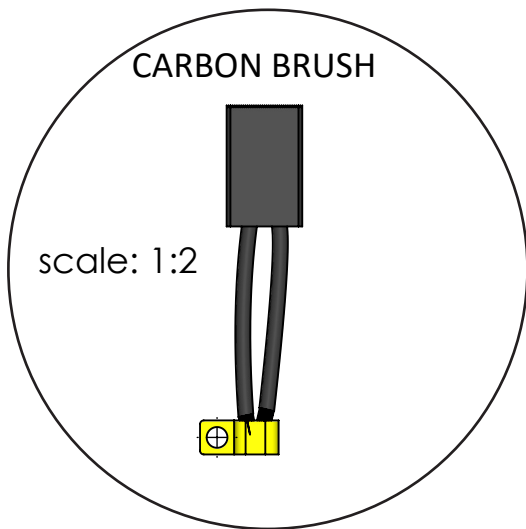
Pos.	Part NR	Description	QTY.
1	I-310-00	Hose Connector 2.5"/76m SS316	1
2	F-223-00	Inbusbout M6x80 DIN912	10
3	F-011-00	Carrosseriering dia.18/6	14
4	P-501-00	Pump Housing Compact	1
5	P-506-02	Impeller Compact SS	1
6	P-124-00	Circlip tbv Lipseal Gr1+Gr2	1
7	P-121-00	Lipseal OBC Gr1+Gr2	1
8	P-123-00	Ring tbv Lipseal Gr1+Gr2	1
9	P-120-00	Lipseal OAC Gr1+Gr2	1
10	P-106-00	Ball Bearing Pumpunit Gr1+Gr2	1
11	P-105-00	Circlip Ring for ball Bearing	1
12	P-505-00	Pumpshaft Compact	1
13	P-502-00	Bearing carrier Compact	1
14	F-004-00	Sluitring M6 DIN125A	12
15	F-103-00	Borgmoer M6 DIN985A	12
16	F-202-00	Inbusbout M5x10 DIN912	4
17	F-003-00	Sluitring M5 DIN125A	4
18	F-204-00	Inbusbout M6x16 DIN912	2
19	P-508-00	Cover for Actuatorplate Compact	1
20	P-511-00	DC Contactor Compact	1
21	P-509-00	Actuator Support JT30 Compact	1
22	P-314-00	DC-Motor EC3.85/1,2/32-12	1
23	P-141-00	Huis tbv Slangklem	1
24	F-226-00	Inbusbout M8x40 DIN912	4
25	F-005-00	Sluitring M8 DIN125A	8
26	F-104-00	Borgmoer M8 DIN985A	4
27	F-205-00	Inbusbout M6x30 DIN912	2
28	P-504-01	Pump Bracket Adjusting plate	1
29	F-005-00	Sluitring M8 DIN125A	2
30	F-221-00	Inbusbout M8x100 DIN912	1
31	F-104-00	Borgmoer M8 DIN985A	1
32	P-514-00	O-Ring Bearing Carrier	1

A3	Do NOT Scale	Scale:		<small>UNLESS OTHERWISE SPECIFIED: DIMENSIONS ARE IN MILLIMETERS</small> <small>0.03 0.03 0.2 0.2 0.2 Ra 3.2</small> <small>ANGLES IN DEGREES - TOLERANCES ±0.2mm ±0.5° - BREAK ALL EDGES</small>	Part No./Note : JT-30-50-12v-Combi
				Drawn by : Toofan Pour Drawn date : 13-9-2017 Checked by : Modified by : Toofan Pour Modified date : 22-6-2018	Customer : Reference : Weight in kg : 29kg Material/Size :

JTV-30-50



scale: 1:3



P-325-00	Brush for DC-Motor 3/3,85KW-12V	JT30
P-326-00	Brush for DC-Motor 6KW-12V	JT50
P-327-00	Brush for DC-Motor 6KW-24V	JT-50
P-328-00	Brush for DC-Motor 11KW-24V	JT-70
P-329-00	Brush for DC-Motor 15.5KW-24V	JT-90

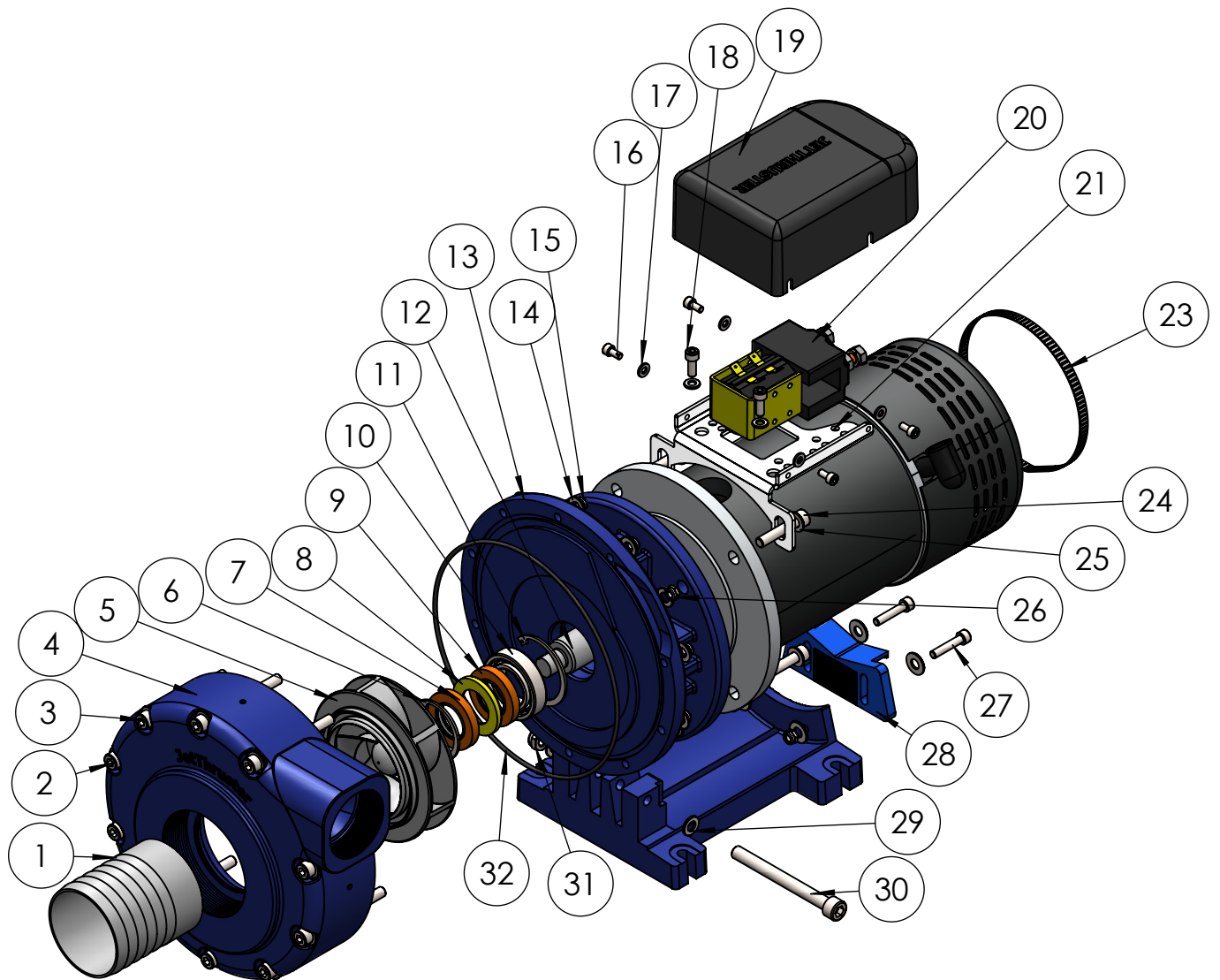
P-337-00	Thermal Sensor DC-Motor 3KW	JT30
P-338-00	Thermal Sensor DC-Motor 6KW	JT-50
P-339-00	Thermal Sensor DC-Motor 11KW	JT70
P-335-00	Thermal Sensor DC-Motor 15.5KW	JT90
P-334-00	Thermal Sensor DC-Motor 3KW vapor proof	JT30

P-266-00	Ignition protection / IP Cover JT-30	JT30
P-267-00	Ignition protection / IP Cover JT-50	JT50

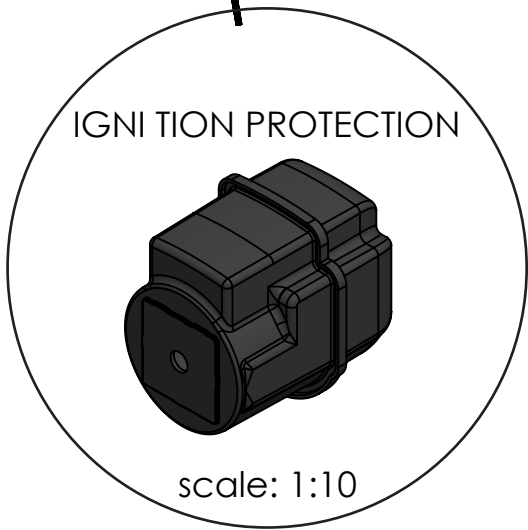
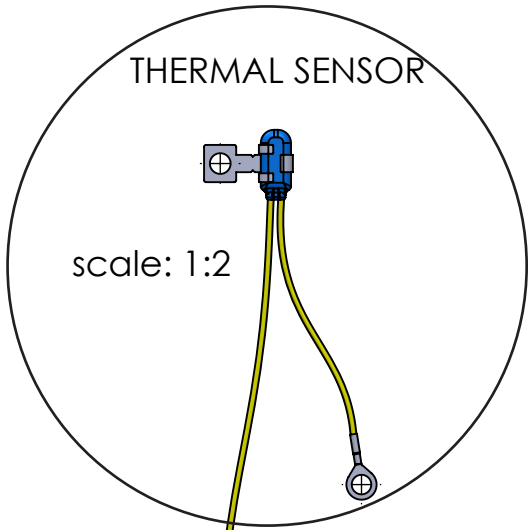
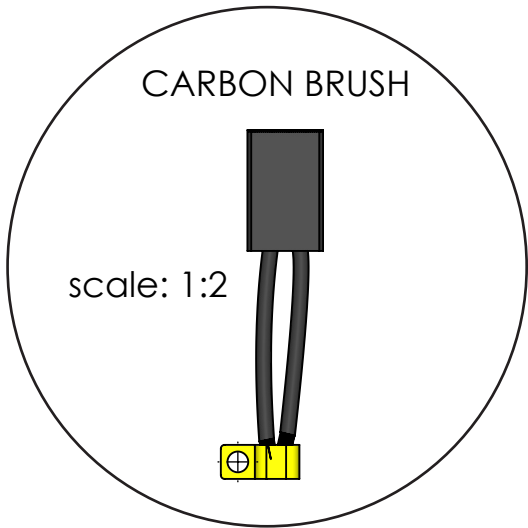
Pos.	Part NR	Description	QTY.
1	P-508-00	Cover for Actuatorplate Compact	1
2	P-511-00	DC Contactor Compact	1
3	P-313-00	DC-Motor EC3.85/1,2/32-12	1
4	F-003-00	Sluitring M5, DIN125A	4
5	F-202-00	Inbusbout M5x10, DIN912	4
6	P-509-00	Actuator Support JT30 Compact	1
7	F-224-00	Inbusbout M10x40 DIN912 A4	2
8	P-120-00	Lipseal OAC Gr1+Gr2	1
9	P-123-00	Ring tbv Lipseal Gr1+Gr2	1
10	P-121-00	Lipseal OBC Gr1+Gr2	1
11	P-124-00	Circlip tbv Lipseal Gr1+Gr2	1
12	F-004-00	Sluitring M6, DIN125A	10
13	P-506-00	Impeller for Compact	1
14	F-103-00	Borgmoer M6, DIN985A	10
15	P-517-00	Pumphousing compact Vertical 3" inlet	1
16	F-011-00	Carrosseriering dia.18/6	10
17	F-223-00	Inbusbout M6x80, DIN912A4	10
18	P-505-00	Pumpshaft Compact	1
19	F-006-00	Sluitring M10, DIN125A	8
20	F-213-00	Inbusbout M10x45, DIN912-A4	2
21	P-502-00	Bearing Carrier Compact	1
22	P-105-00	Circlip Ring for ball Bearing	1
23	P-106-00	Ball Bearing Pumpunit Gr1+Gr2	1
24	P-514-00	O-Ring Bearing Carrier	1
25	F-105-00	Borgmoer M10, DIN985A	4

A3	Do NOT Scale	Scale: 1:3		UNLESS OTHERWISE SPECIFIED: DIMENSIONS ARE IN MILLIMETERS 0.03 0.03 0.2 0.2 0.2 Ra 3.2 ANGLES IN DEGREES - TOLERANCES ±0.2mm ±0.5° - BREAK ALL EDGES	
				Drawn by : Toofan Pour Drawn date : 13-9-2017 Checked by : Modified by : 25-6-2018 Modified date :	Part No./Note : JTV-30-50-12V Customer : Reference : Weight in kg : 29kg Material/Size :

JT-50-50 (6KW)



scale: 1:5



P-325-00	Brush for DC-Motor 3/3,85KW-12V	JT30
P-326-00	Brush for DC-Motor 6KW-12V	JT50
P-327-00	Brush for DC-Motor 6KW-24V	JT50
P-328-00	Brush for DC-Motor 11KW-24V	JT70
P-329-00	Brush for DC-Motor 15.5KW-24V	JT90

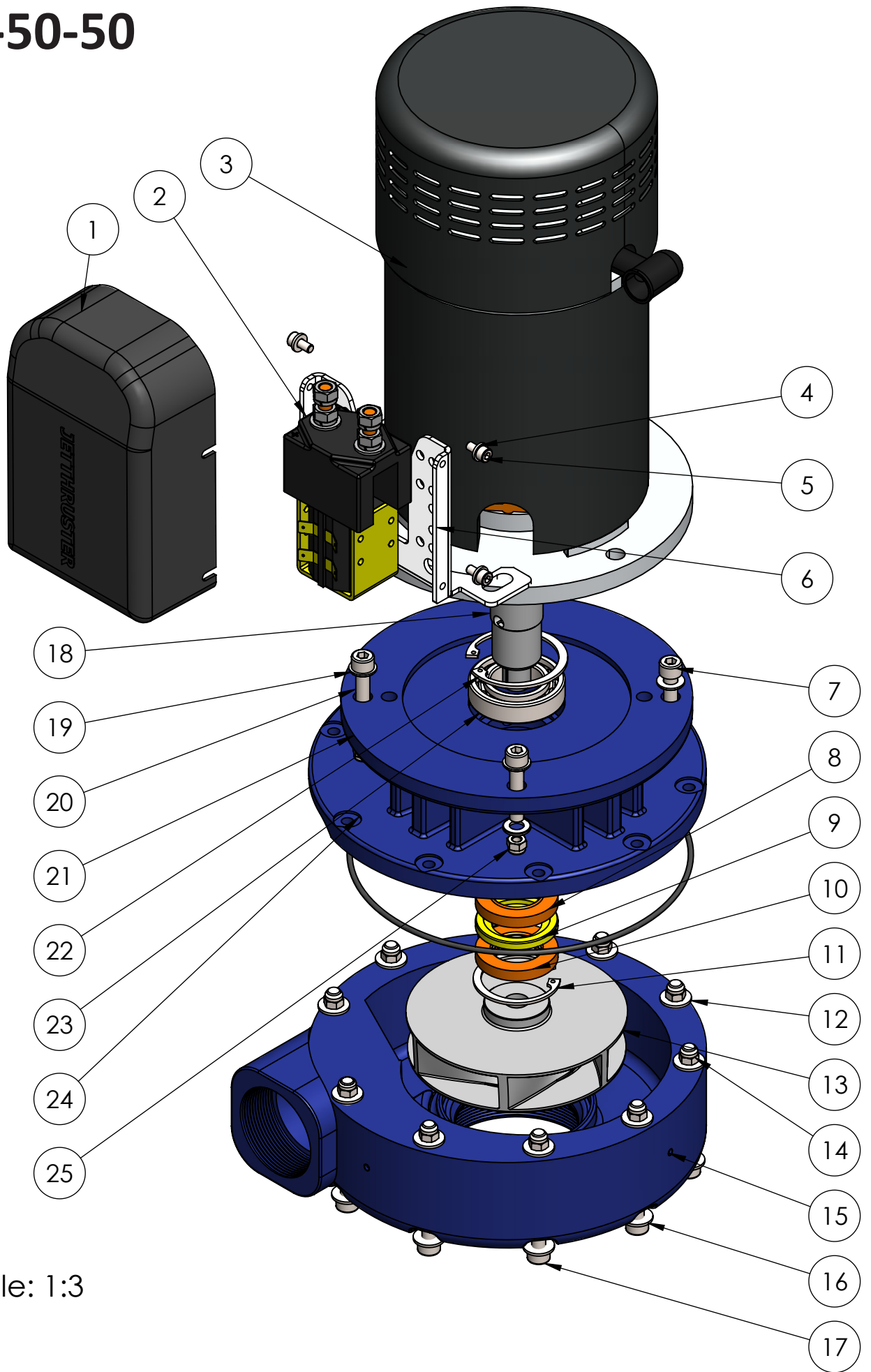
P-337-00	Thermal Sensor DC-Motor 3KW	JT30
P-338-00	Thermal Sensor DC-Motor 6KW	JT50
P-339-00	Thermal Sensor DC-Motor 11KW	JT70
P-335-00	Thermal Sensor DC-Motor 15.5KW	JT90
P-334-00	Thermal Sensor DC-Motor 3KW vapor proof	JT30

P-266-00	Ignition protection / IP Cover JT-30	JT30
P-267-00	Ignition protection / IP Cover JT-50	JT50

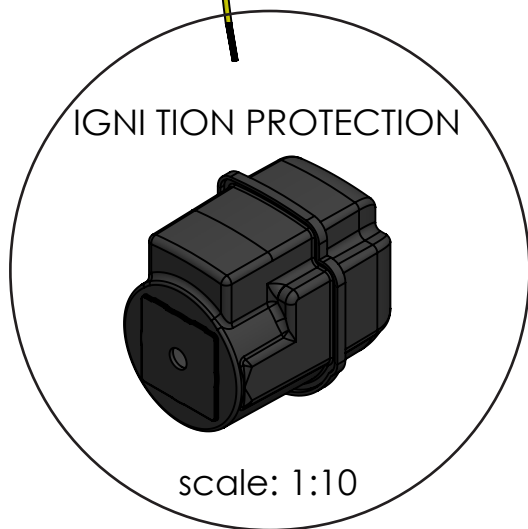
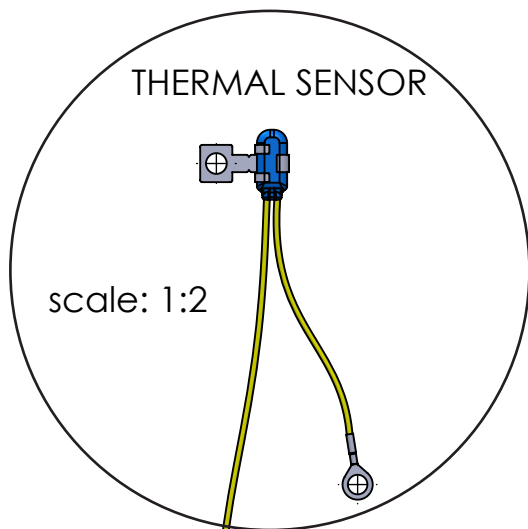
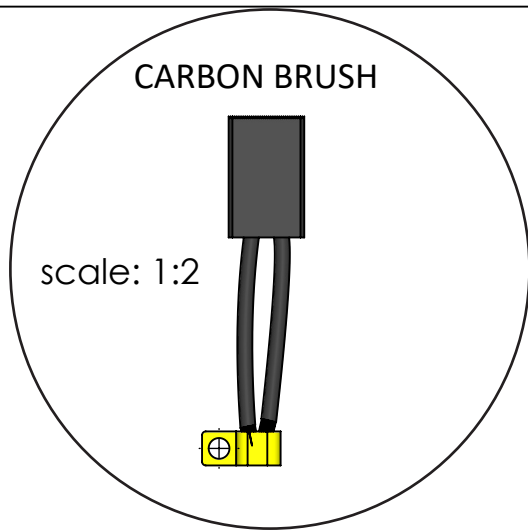
Pos.	Part NR	Description	QTY.
1	I-310-00	Hose Connector 2.5"/76m SS316	1
2	F-223-00	Inbusbout M6x80 DIN912	10
3	F-011-00	Carrosseriering dia.18/6	14
4	P-501-00	Pump Housing Compact	1
5	P-506-02	Impeller Compact SS	1
6	P-124-00	Circlip tbv Lipseal Gr1+Gr2	1
7	P-121-00	Lipseal OBC Gr1+Gr2	1
8	P-123-00	Ring tbv Lipseal Gr1+Gr2	1
9	P-120-00	Lipseal OAC Gr1+Gr2	1
10	P-106-00	Ball Bearing Pumpunit Gr1+Gr2	1
11	P-105-00	Circlip Ring for ball Bearing	1
12	P-505-00	Pumpshaft Compact	1
13	P-502-00	Bearing carrier Compact	1
14	F-004-00	Sluitring M6 DIN125A	12
15	F-103-00	Borgmoer M6 DIN985A	12
16	F-202-00	Inbusbout M5x10 DIN912	4
17	F-003-00	Sluitring M5 DIN125A	4
18	F-204-00	Inbusbout M6x16 DIN912	2
19	P-508-00	Cover for Actuatorplate Compact	1
20	P-511-00	DC Contactor Compact	1
21	P-510-00	Actuator Support JT50 Compact	1
22	P-315-00	DC-Motor EC6/1,2/40	1
23	P-141-00	Huis tbv Slangklem	1
24	F-226-00	Inbusbout M8x40 DIN912	4
25	F-005-00	Sluitring M8 DIN125A	8
26	F-104-00	Borgmoer M8 DIN985A	4
27	F-205-00	Inbusbout M6x30 DIN912	2
28	P-504-01	Pump Bracket Adjusting plate	1
29	F-005-00	Sluitring M8 DIN125A	2
30	F-221-00	Inbusbout M8x100 DIN912	1
31	F-104-00	Borgmoer M8 DIN985A	1
32	P-514-00	O-Ring Bearing Carrier	1

A3	Do NOT Scale	Scale:		<small>UNLESS OTHERWISE SPECIFIED: DIMENSIONS ARE IN MILLIMETERS</small> <small>0.03 0.03 0.2 0.2 0.2 Ra 3.2</small> <small>ANGLES IN DEGREES - TOLERANCES ±0.2mm ±0.5° - BREAK ALL EDGES</small>	Part No./Note : JT-50-50-24v
				Drawn by : Toofan Pour Drawn date : 13-9-2017 Checked by : Modified by : Toofan Pour Modified date : 22-6-2018	Customer : Reference : Weight in kg : 30kg Material/Size :

JTV-50-50



scale: 1:3



P-325-00	Brush for DC-Motor 3/3,85KW-12V	JT30
P-326-00	Brush for DC-Motor 6KW-12V	JT50
P-327-00	Brush for DC-Motor 6KW-24V	JT-50
P-328-00	Brush for DC-Motor 11KW-24V	JT-70
P-329-00	Brush for DC-Motor 15.5KW-24V	JT-90

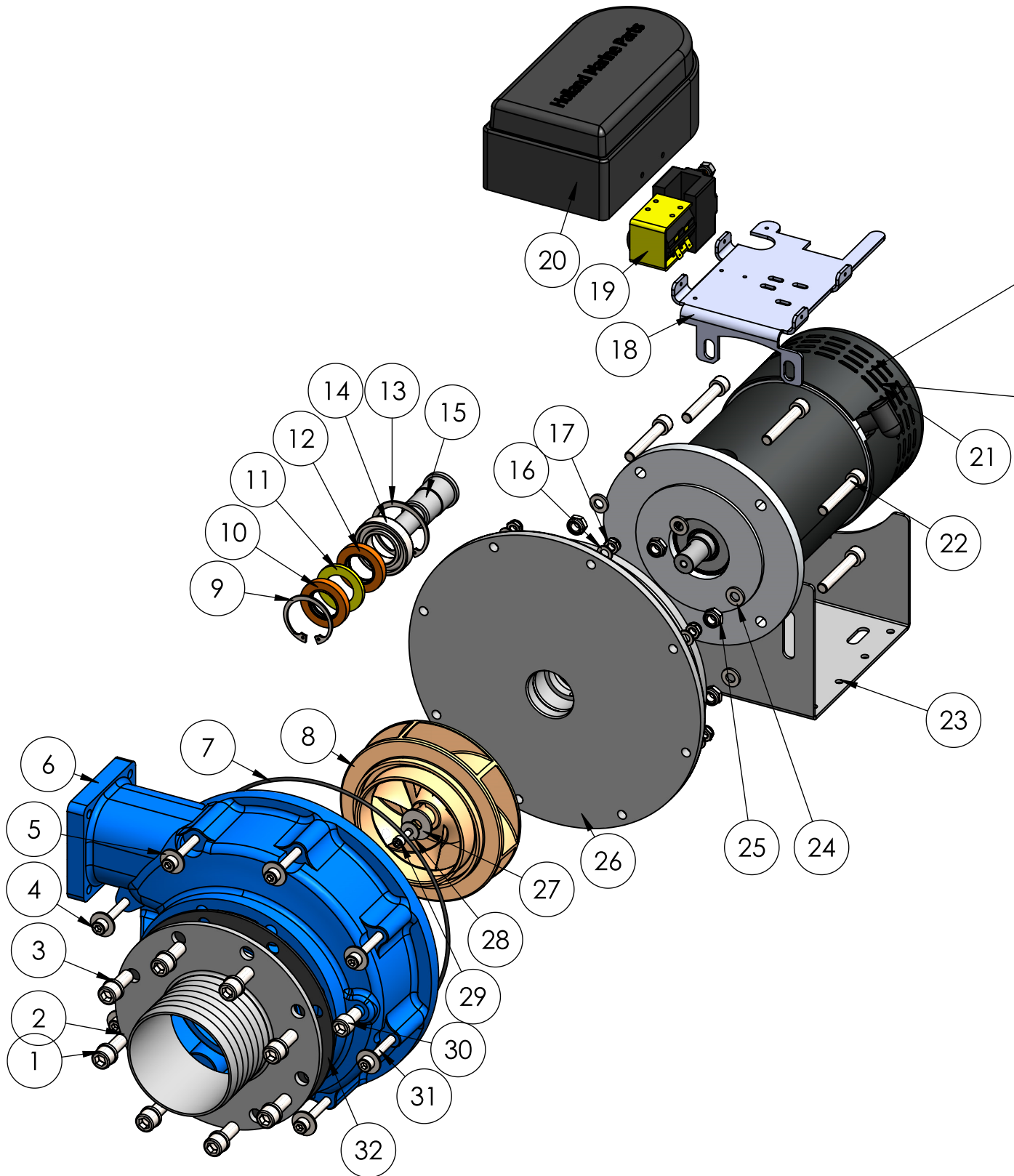
P-337-00	Thermal Sensor DC-Motor 3KW	JT30
P-338-00	Thermal Sensor DC-Motor 6KW	JT-50
P-339-00	Thermal Sensor DC-Motor 11KW	JT70
P-335-00	Thermal Sensor DC-Motor 15.5KW	JT90
P-334-00	Thermal Sensor DC-Motor 3KW vapor proof	JT30

P-266-00	Ignition protection / IP Cover JT-30	JT30
P-267-00	Ignition protection / IP Cover JT-50	JT50

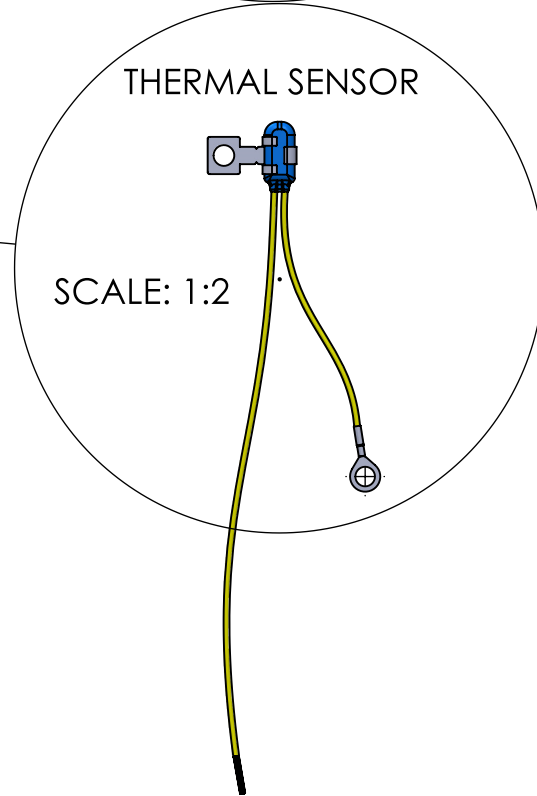
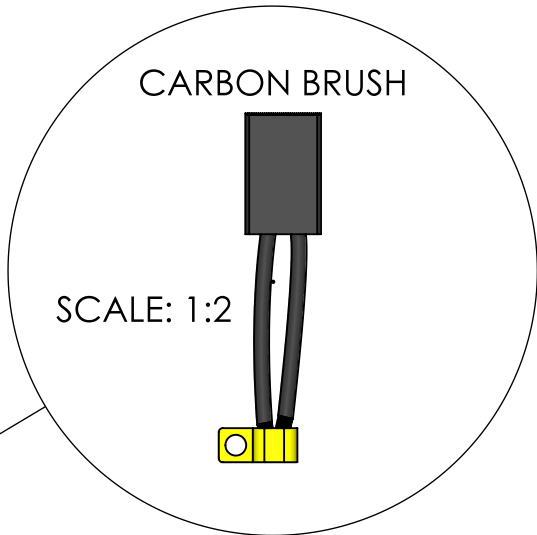
Pos.	Part NR	Description	QTY.
1	P-508-00	Cover for Actuatorplate Compact	1
2	P-511-00	DC Contactor Compact	1
3	P-315-00	DC-Motor EC6/1,2/40	1
4	F-003-00	Sluitring M5, DIN125A	4
5	F-202-00	Inbusbout M5x10, DIN912	4
6	P-510-00	Actuator Support JT50 Compact	1
7	F-224-00	Inbusbout M10x40 DIN912 A4	2
8	P-120-00	Lipseal OAC Gr1+Gr2	1
9	P-123-00	Ring tbv Lipseal Gr1+Gr2	1
10	P-121-00	Lipseal OBC Gr1+Gr2	1
11	P-124-00	Circlip tbv Lipseal Gr1+Gr2	1
12	F-004-00	Sluitring M6, DIN125A	10
13	P-506-00	Impeller for Compact	1
14	F-103-00	Borgmoer M6, DIN985A	10
15	P-517-00	Pumphousing compact Vertical 3" inlet	1
16	F-011-00	Carrosseriering dia.18/6	10
17	F-223-00	Inbusbout M6x80, DIN912A4	10
18	P-505-00	Pumpshaft Compact	1
19	F-006-00	Sluitring M10, DIN125A	8
20	F-213-00	Inbusbout M10x45, DIN912-A4	2
21	P-502-00	Bearing Carrier Compact	1
22	P-105-00	Circlip Ring for ball Bearing	1
23	P-106-00	Ball Bearing Pumpunit Gr1+Gr2	1
24	P-514-00	O-Ring Bearing Carrier	1
25	F-105-00	Borgmoer M10, DIN985A	4

A3	Do NOT Scale	Scale: 1:3		<small>UNLESS OTHERWISE SPECIFIED: DIMENSIONS ARE IN MILLIMETERS</small> <small>0.03 0.03 0.2 0.2 0.2 Ra 3.2</small> <small>ANGLES IN DEGREES - TOLERANCES ±0.2mm ±0.5° - BREAK ALL EDGES</small>	
				Drawn by : Toofan Pour Drawn date : 13-9-2017 Checked by : Modified by : Modified date :	Part No./Note : JTV-50-50-24V-Single Customer : Reference : Weight in kg : 29kg Material/Size :

JT-70-50 (11KW)



SCALE: 1:5



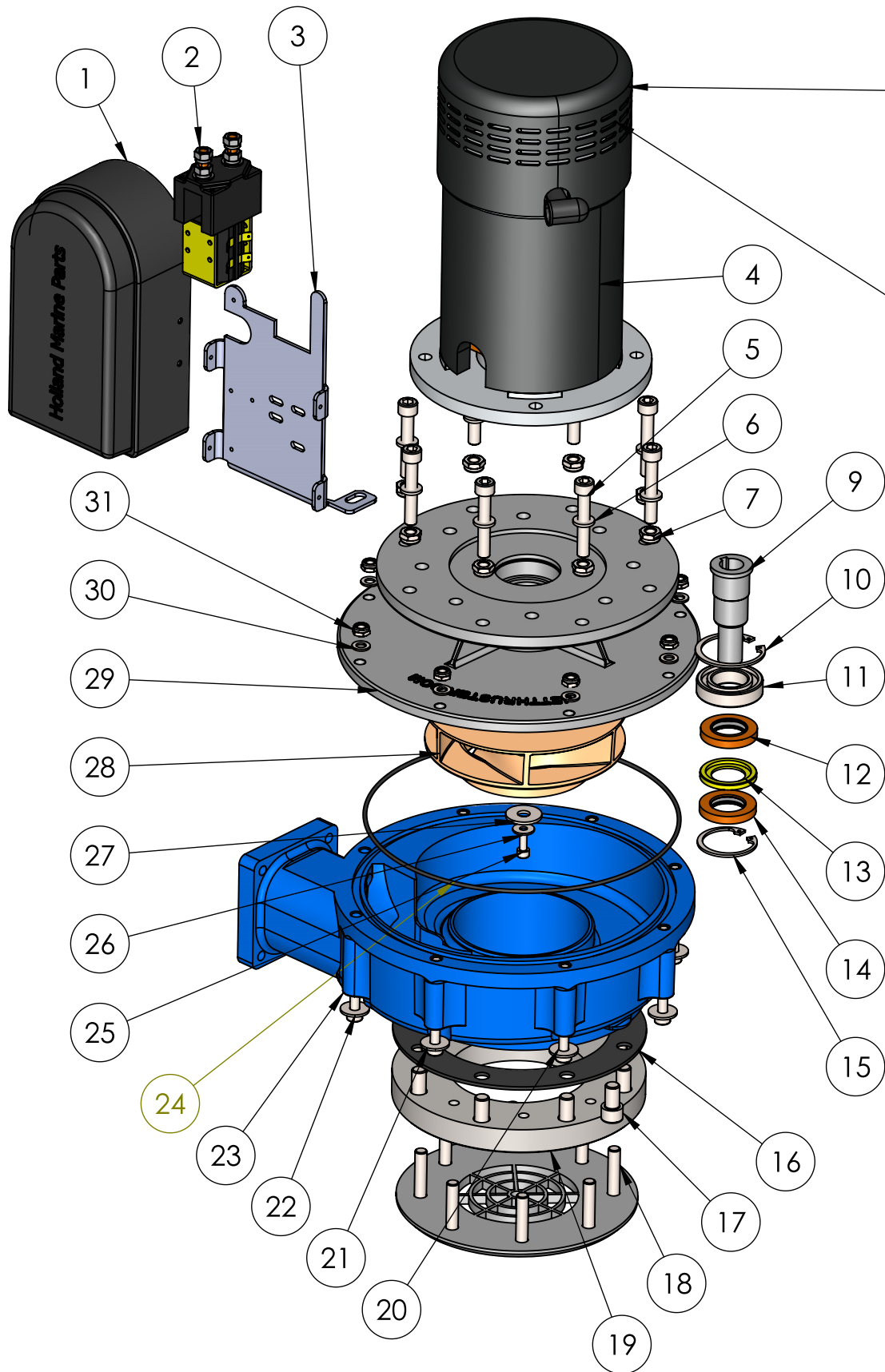
P-325-00	Brush for DC-Motor 3/3,85KW-12V	JT30
P-326-00	Brush for DC-Motor 6KW-12V	JT50
P-327-00	Brush for DC-Motor 6KW-24V	JT50
P-328-00	Brush for DC-Motor 10/11KW-24V	JT70
P-329-00	Brush for DC-Motor 14/15,5KW-24V	JT90

P-337-00	Thermal Sensor DC-Motor 3KW	JT30
P-338-00	Thermal Sensor DC-Motor 6KW	JT50
P-339-00	Thermal Sensor DC-Motor 11KW	JT70
P-335-00	Thermal Sensor DC-Motor 15.5KW	JT90
P-334-00	Thermal Sensor DC-Motor 3KW vapor proof	JT30

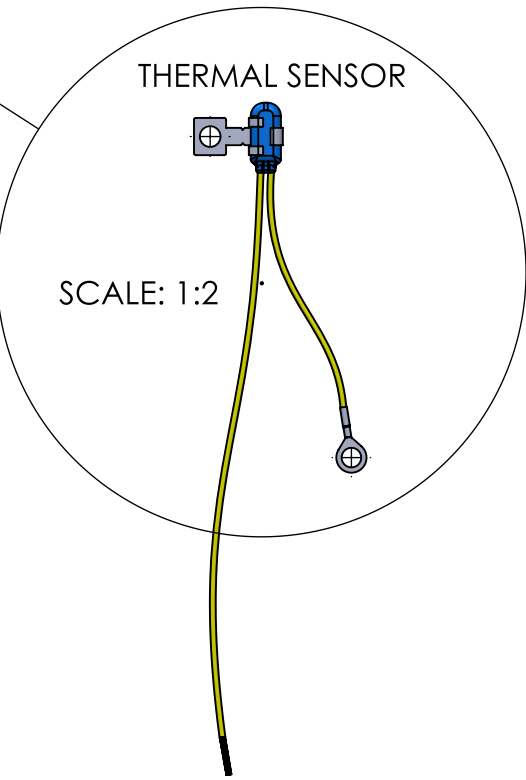
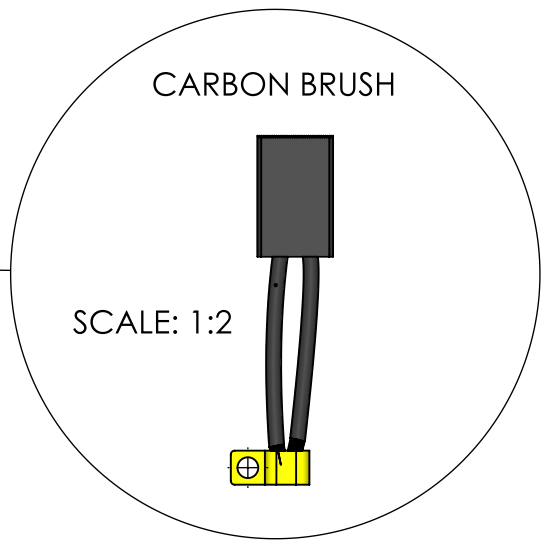
Pos.	Part NR	Description	QTY.
1	F-211-00	Inbusbout M12x30, DIN912	8
2	P-205-00	Pump Waterinlet Flange	1
3	F-008-00	Sluitring M12 DIN125A	8
4	F-231-00	Inbusbout M8x95 DIN912 A4	2
5	F-007-00	Carrosseriering Dia.24/M8, A2	8
6	P-201-00	Pumphhead Gr2	1
7	P-265-00	O-Ring for Pumphouse Gr2	1
8	P-207-00	Impeller JT70 / JT90 Alu-Bronze	1
9	P-124-00	Circlip tbv Lipseal Gr1+Gr2	1
10	P-120-00	Lipseal OBC Gr1+Gr2	1
11	P-123-00	Ring tbv Lipseal Gr1+Gr2	1
12	P-121-00	Lipseal OAC Gr1+Gr2	1
13	P-105-00	Circlip Ring for ball Bearing	1
14	P-106-00	Ball Bearing Pumpunit Gr1+Gr2	1
15	P-204-00	Impeller Axel Gr2	1
16	F-005-00	Sluitring M8, DIN125A	8
17	F-104-00	Borgmoer M8, DIN985A	8
18	P-113-02	Actuatorsteun JT-50S 12V/JT-70 S/C 24V	1
19	E-022-00	DC Contactor SW200 JT70/JT90	1
20	P-301-00	Plastic Cover on pump unit JT70-JT90	1
21	P-321-00	DC-Motor EC 11/4,8/32	1
22	F-217-00	Inbusbout M10x60 DIN912-A4	8
23	P-218-01	Pump Bracket JT70	2
24	F-006-00	Sluitring M10, DIN125A	8
25	F-105-00	Borgmoer M10, DIN985A	8
26	P-202-00	Bearing Carrier Gr2	1
27	F-009-00	Carrosseriering Dia.30/M8	1
28	F-011-00	Carrosseriering Dia.18/M6	1
29	F-204-00	Inbusbout M6x16, DIN912 A4	1
30	F-604-00	Plug 1/4"G	1
31	F-209-00	Inbusbout M8x85, DIN912	6
32	I-604-00	Seal 4" for Pump Inlet 4"	1

A3	Do NOT Scale	Scale:		<small>UNLESS OTHERWISE SPECIFIED: DIMENSIONS ARE IN MILLIMETERS</small> <small>0.03 0.03 0.2 0.2 0.2 Ra 3.2</small> <small>ANGLES IN DEGREES - TOLERANCES ±0.2mm ±0.5° - BREAK ALL EDGES</small>	Part No./Note : JT-70-50-24v
				Drawn by : Toofan Pour Drawn date : 13-7-2017 Checked by : Modified by : Modified date :	Customer : Reference : Weight in kg : 59kg Material/Size :

JTV-70-50 (11KW)



SCALE: 1:5



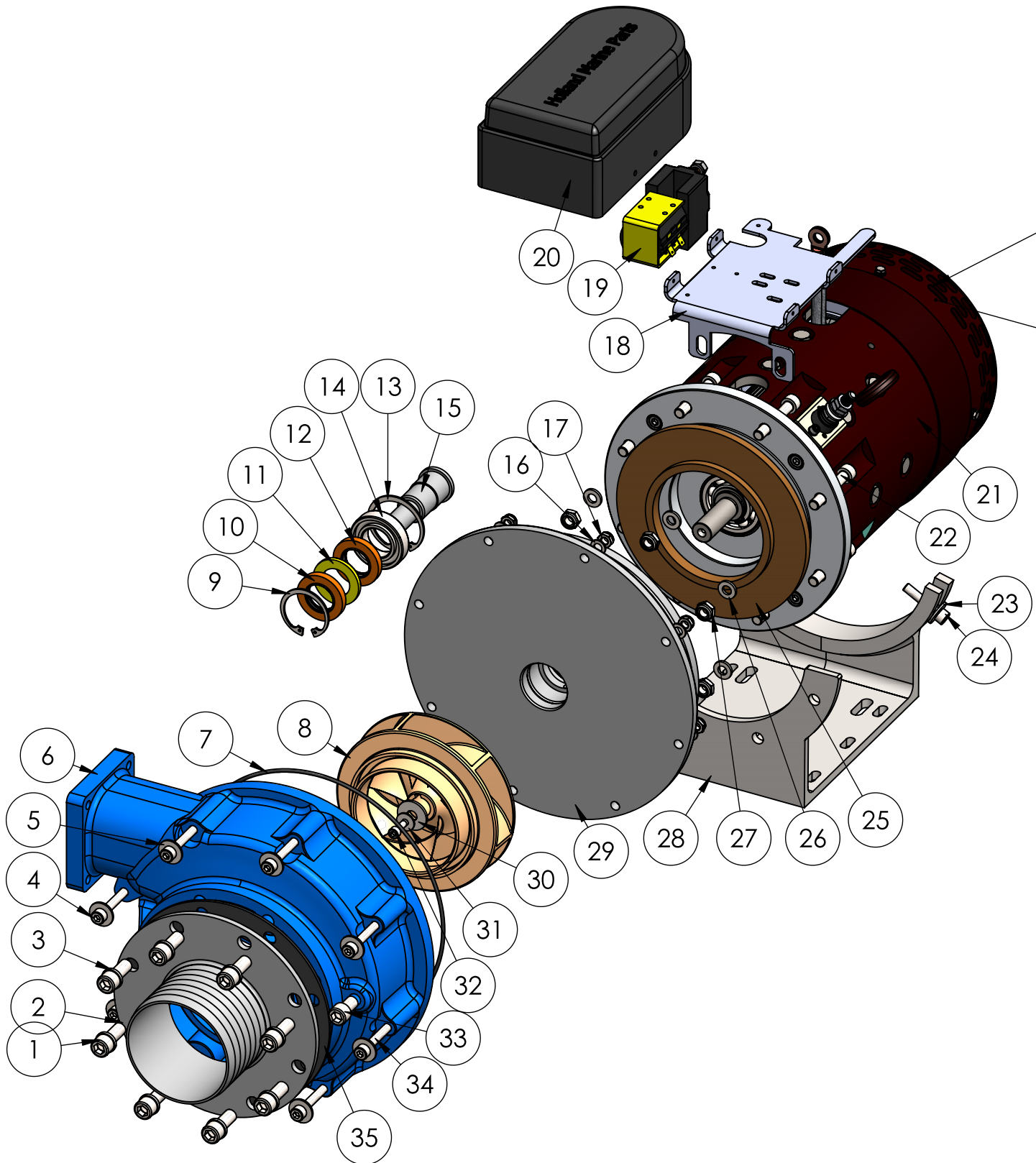
P-325-00	Brush for DC-Motor 3/3,85KW-12V	JT30
P-326-00	Brush for DC-Motor 6KW-12V	JT50
P-327-00	Brush for DC-Motor 6KW-24V	JT50
P-328-00	Brush for DC-Motor 10/11KW-24V	JT70
P-329-00	Brush for DC-Motor 14/15,5KW-24V	JT90

P-337-00	Thermal Sensor DC-Motor 3KW	JT30
P-338-00	Thermal Sensor DC-Motor 6KW	JT50
P-339-00	Thermal Sensor DC-Motor 11KW	JT70
P-335-00	Thermal Sensor DC-Motor 15,5KW	JT90
P-334-00	Thermal Sensor DC-Motor 3KW vapor proof	JT30

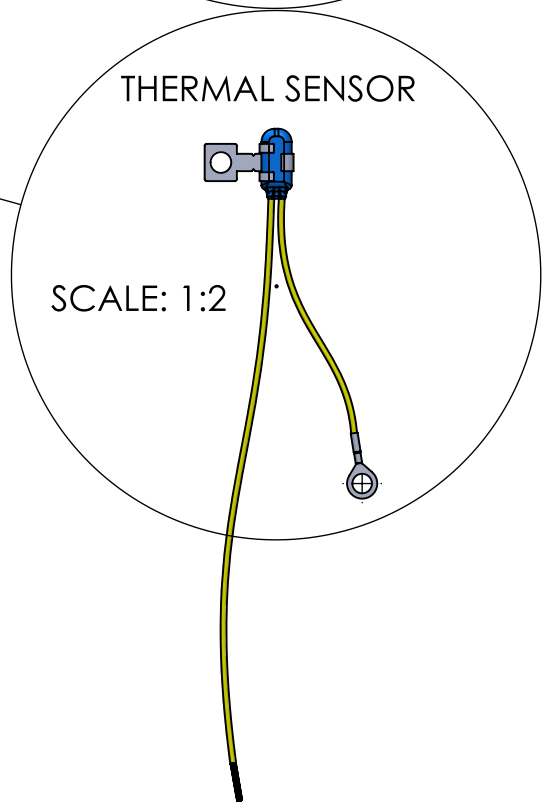
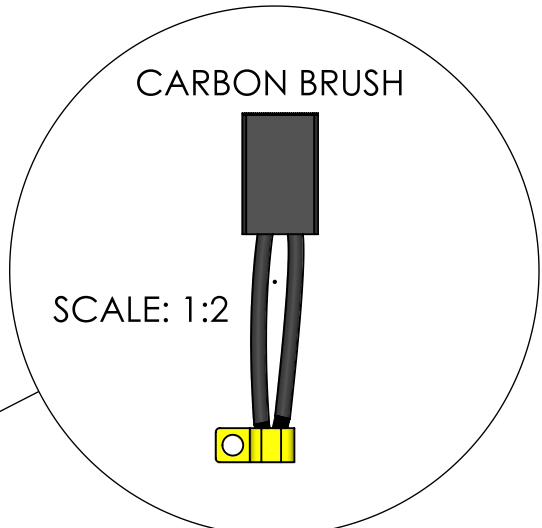
Pos.	Part NR	Description	QTY.
1	P-301-00	Plastic Cover on pump unit JT70-JT90	1
2	E-022-00	DC Contactor SW200 JT70/JT90	1
3	P-211-00	Actuator Socket 15,5KW	1
4	P-321-00	DC-Motor EC 11/4,8/32	1
5	F-217-00	Inbusbout M10x60 DIN912-A4	8
6	F-006-00	Sluitring M10, DIN125A	8
7	F-105-00	Borgmoer M10, DIN985A	8
8	P-220-00	Motor-Tussenflens dia.200/115x20	1
9	P-204-00	Impeller Axel Gr2	1
10	P-105-00	Circlip Ring for ball Bearing	1
11	P-106-00	Ball Bearing Pumpunit Gr1+Gr2	1
12	P-121-00	Lipseal OAC Gr1+Gr2	1
13	P-123-00	Ring tbv Lipseal Gr1+Gr2	1
14	P-120-00	Lipseal OBC Gr1+Gr2	1
15	P-124-00	Circlip tbv Lipseal Gr1+Gr2	1
16	I-604-00	Seal 4" for Pump Inlet 4"	1
17	F-604-00	Plug 1/4"G	1
18	F-222-00	Schroef Platverz.kop/Inbus M10x50, A4	8
19	I-618-01	Intermediate Flange Water Inlet Vertical JT70/90	1
20	F-209-00	Inbusbout M8x85, DIN912	6
21	F-007-00	Carrosseriering Dia.24/M8, A2	8
22	F-231-00	Inbusbout M8x95 DIN912 A4	2
23	P-201-00	Pumphead Gr2	1
24	P-265-00	O-Ring for Pumphouse / Bearing Carrier Gr2	1
25	F-204-00	Inbusbout M6x16, DIN912 A4	1
26	F-011-00	Carrosseriering dia.18/6	1
27	F-009-00	Carrosseriering M8/30	1
28	P-207-00	Impeller JT70 / JT90 Alu-Bronze	1
29	F-202-00	Bearing Carrier Gr2	1
30	F-005-00	Sluitring M8, DIN125A	8
31	F-104-00	Borgmoer M8, DIN985A	8

A3	Do NOT Scale	Scale: 1:5		<small>UNLESS OTHERWISE SPECIFIED: DIMENSIONS ARE IN MILLIMETERS</small> <small>0.03 0.03 0.2 0.2 0.2 Ra 3.2</small> <small>ANGLES IN DEGREES - TOLERANCES ±0.2mm ±0.5° - BREAK ALL EDGES</small>	Part No./Note : JTV-70-50
				Drawn by : Toofan Pour Drawn date : 13-9-2017 Checked by : Modified by : Modified date :	Customer : Reference : Weight in kg : 57kg Material/Size :

JT-90-50 (15.5KW)



SCALE: 1:5



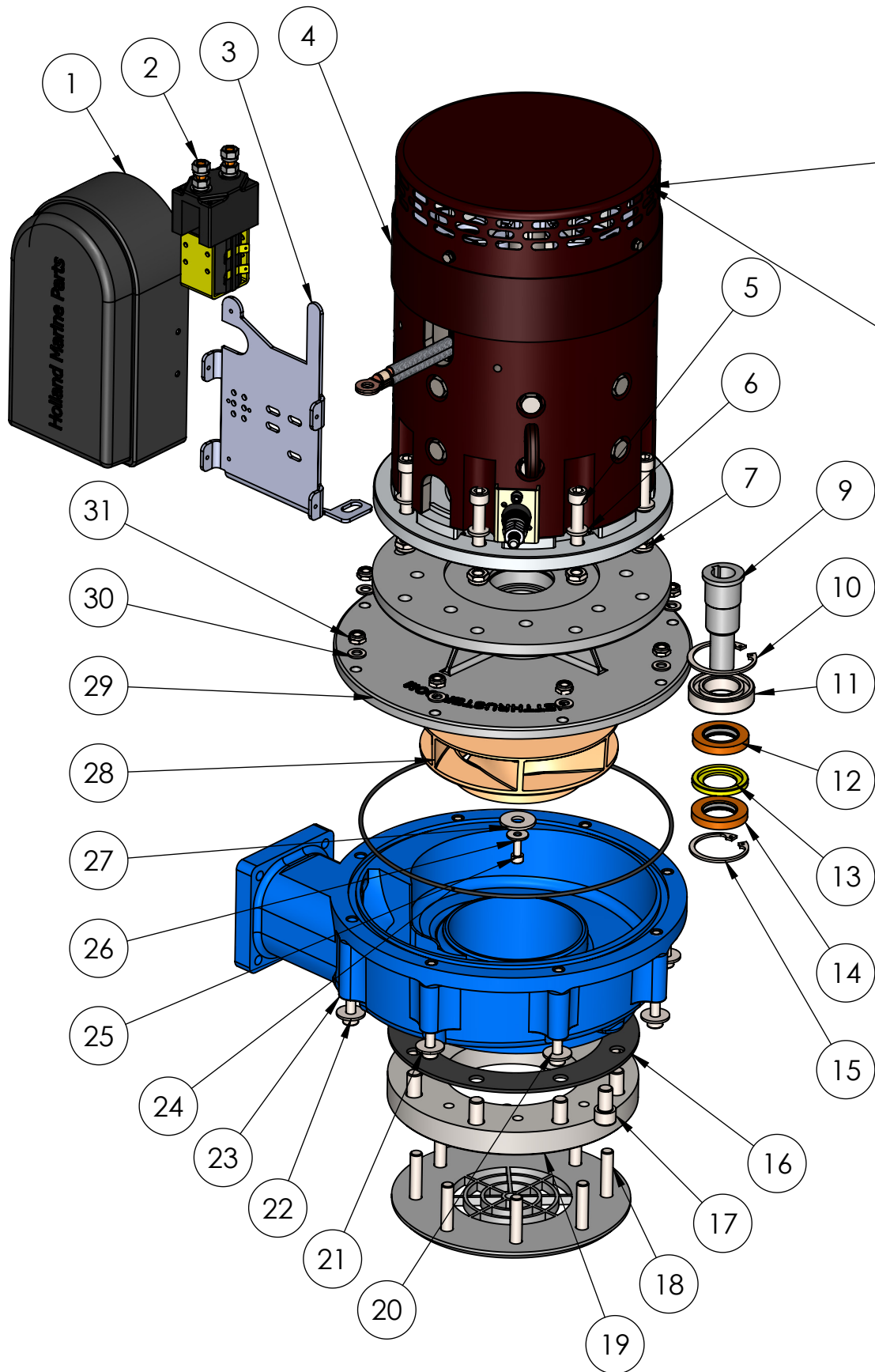
P-325-00	Brush for DC-Motor 3/3,85KW-12V	JT30
P-326-00	Brush for DC-Motor 6KW-12V	JT50
P-327-00	Brush for DC-Motor 6KW-24V	JT50
P-328-00	Brush for DC-Motor 10/11KW-24V	JT70
P-329-00	Brush for DC-Motor 14/15,5KW-24V	JT90

P-337-00	Thermal Sensor DC-Motor 3KW	JT30
P-338-00	Thermal Sensor DC-Motor 6KW	JT50
P-339-00	Thermal Sensor DC-Motor 11KW	JT70
P-335-00	Thermal Sensor DC-Motor 15.5KW	JT90
P-334-00	Thermal Sensor DC-Motor 3KW vapor proof	JT30

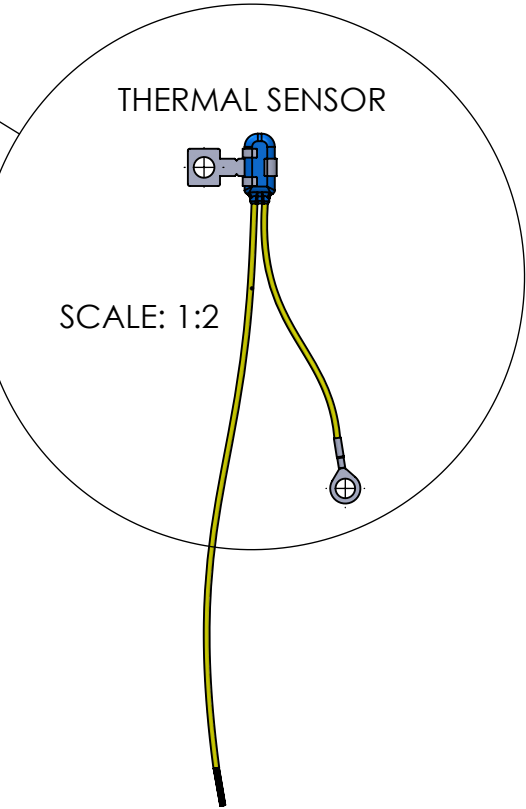
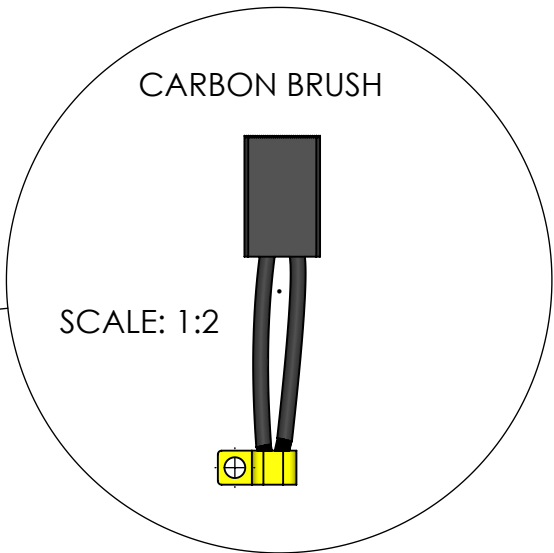
Pos.	Part NR	Description	QTY.
1	F-211-00	Inbusbout M12x30, DIN912	8
2	P-205-00	Pump Waterinlet Flange	1
3	F-008-00	Sluitring M12 DIN125A	8
4	F-231-00	Inbusbout M8x95 DIN912 A4	2
5	F-007-00	Carroseriering Dia.24/M8, A2	8
6	P-201-00	Pumphead Gr2	1
7	P-265-00	O-Ring for Pumphouse Gr2	1
8	P-207-00	Impeller JT70 / JT90 Alu-Bronze	1
9	P-124-00	Circlip tbv Lipseal Gr1+Gr2	1
10	P-120-00	Lipseal OBC Gr1+Gr2	1
11	P-123-00	Ring tbv Lipseal Gr1+Gr2	1
12	P-121-00	Lipseal OAC Gr1+Gr2	1
13	P-105-00	Circlip Ring for ball Bearing	1
14	P-106-00	Ball Bearing Pumpunit Gr1+Gr2	1
15	P-204-00	Impeller Axel Gr2	1
16	F-005-00	Sluitring M8, DIN125A	8
17	F-104-00	Borgmoer M8, DIN985A	8
18	P-211-00	Actuator Socket 15,5KW	1
19	E-022-00	DC Contactor SW200 JT70/JT90	1
20	P-301-00	Plastic Cover on pump unit JT70-JT90	1
21	P-319-00	DC-Motor 15,5 KW frame size 220	1
22	F-217-00	Inbusbout M10x60 DIN912-A4	8
23	F-007-00	Carroseriering Dia.24/M8, A2	2
24	F-219-00	Inbusbout M8x20, A4	2
25	P-220-00	Motor-Tussenflens dia.200/115x20	1
26	F-006-00	Sluitring M10, DIN125A	8
27	F-105-00	Borgmoer M10, DIN985A	8
28	P-216-00	Pump Socket JT90	1
29	P-202-00	Bearing Carrier Gr2	1
30	F-009-00	Carroseriering Dia.30/M8	1
31	F-011-00	Carroseriering Dia.18/M6	1
32	F-204-00	Inbusbout M6x16, DIN912 A4	1
33	F-604-00	Plug 1/4"G	1
34	F-209-00	Inbusbout M8x85, DIN912	6
35	I-604-00	Seal 4" for Pump Inlet 4"	1

A3	Do NOT Scale	Scale:		<small>UNLESS OTHERWISE SPECIFIED: DIMENSIONS ARE IN MILLIMETERS</small> <small>0.03 0.03 0.2 0.2 0.2 Ra 3.2</small> <small>ANGLES IN DEGREES - TOLERANCES ±0.2mm ±0.5° - BREAK ALL EDGES</small>	Part No./Note : JT-90-50-24v
				Drawn by : Toofan Pour Drawn date : 13-7-2017 Checked by : Modified by : Modified date :	Customer : Reference : Weight in kg : 61kg Material/Size :

JTV-90-50 (15.5KW)



SCALE: 1:5



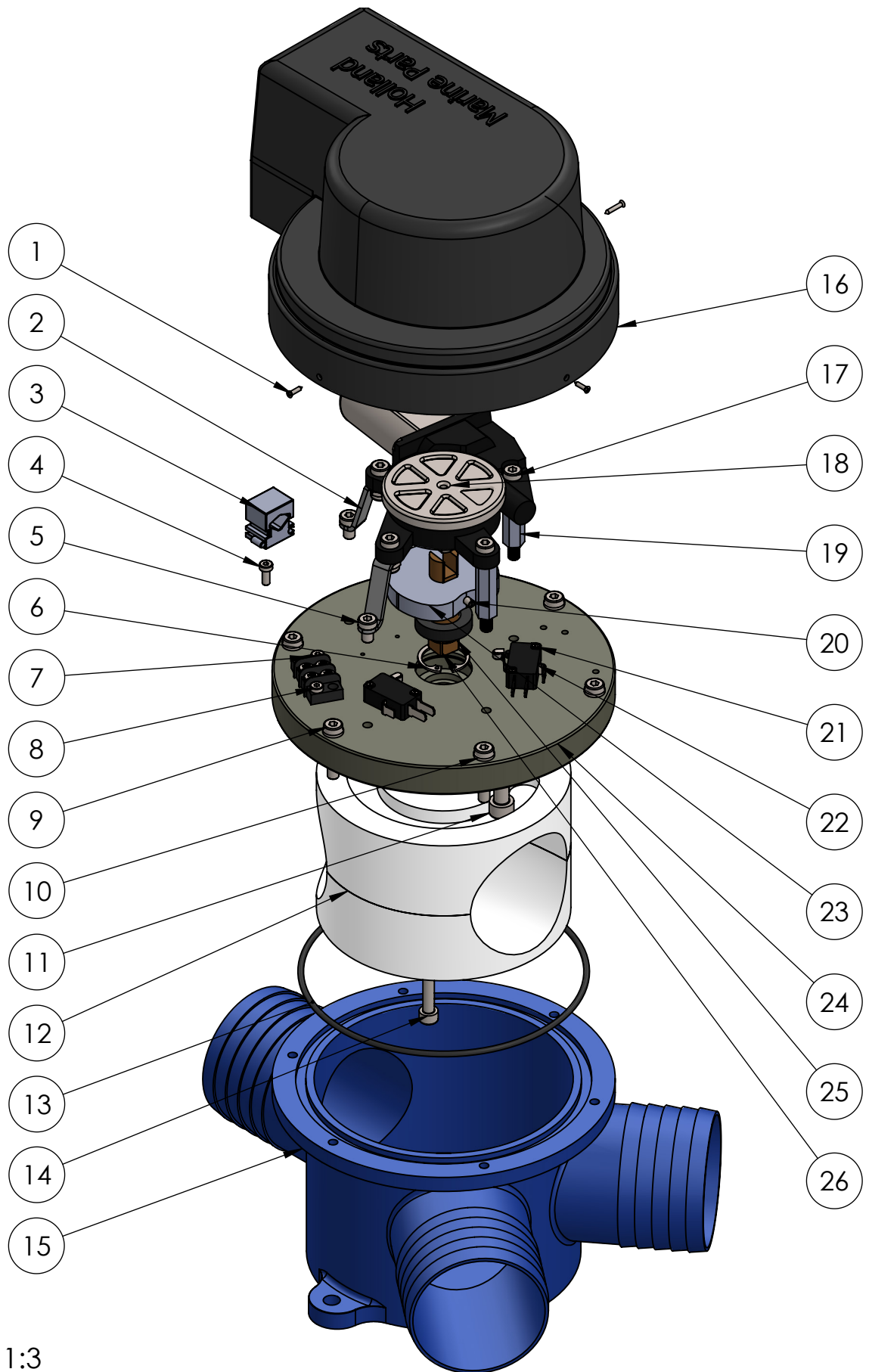
P-325-00	Brush for DC-Motor 3/3,85KW-12V	JT30
P-326-00	Brush for DC-Motor 6KW-12V	JT50
P-327-00	Brush for DC-Motor 6KW-24V	JT50
P-328-00	Brush for DC-Motor 10/11KW-24V	JT70
P-329-00	Brush for DC-Motor 14/15,5KW-24V	JT90

P-337-00	Thermal Sensor DC-Motor 3KW	JT30
P-338-00	Thermal Sensor DC-Motor 6KW	JT50
P-339-00	Thermal Sensor DC-Motor 11KW	JT70
P-335-00	Thermal Sensor DC-Motor 15,5KW	JT90
P-334-00	Thermal Sensor DC-Motor 3KW vapor proof	JT30

Pos.	Part NR	Description	QTY.
1	P-301-00	Plastic Cover on pump unit JT70-JT90	1
2	E-022-00	DC Contactor SW200 JT70/JT90	1
3	P-211-00	Actuator Socket 15,5KW	1
4	P-319-00	DC-Motor 15,5 KW frame size 220	1
5	F-217-00	Inbusbout M10x60 DIN912-A4	8
6	F-006-00	Sluitring M10, DIN125A	8
7	F-105-00	Borgmoer M10, DIN985A	8
8	P-220-00	Motor-Tussenflens dia.200/115x20	1
9	P-204-00	Impeller Axel Gr2	1
10	P-105-00	Circlip Ring for ball Bearing	1
11	P-106-00	Ball Bearing Pumpunit Gr1+Gr2	1
12	P-121-00	Lipseal OAC Gr1+Gr2	1
13	P-123-00	Ring tbv Lipseal Gr1+Gr2	1
14	P-120-00	Lipseal OBC Gr1+Gr2	1
15	P-124-00	Circlip tbv Lipseal Gr1+Gr2	1
16	I-604-00	Seal 4" for Pump Inlet 4"	1
17	F-604-00	Plug 1/4"G	1
18	F-222-00	Schroef Platverz.kop/Inbus M10x50, A4	8
19	I-618-01	Intermediate Flange Water Inlet Vertical JT70/90	1
20	F-209-00	Inbusbout M8x85, DIN912	6
21	F-007-00	Carrosseriering Dia.24/M8, A2	8
22	F-231-00	Inbusbout M8x95 DIN912 A4	2
23	P-201-00	Pumphead Gr2	1
24	P-265-00	O-Ring for Pumphouse / Bearing Carrier Gr2	1
25	F-204-00	Inbusbout M6x16, DIN912 A4	1
26	F-011-00	Carrosseriering dia.18/6	1
27	F-009-00	Carrosseriering M8/30	1
28	P-207-00	Impeller JT70 / JT90 Alu-Bronze	1
29	F-202-00	Bearing Carrier Gr2	1
30	F-005-00	Sluitring M8, DIN125A	8
31	F-104-00	Borgmoer M8, DIN985A	8


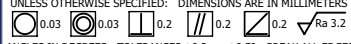

A3	Do NOT Scale	Scale: 1:5		<small>UNLESS OTHERWISE SPECIFIED: DIMENSIONS ARE IN MILLIMETERS</small> <small>0.03 0.03 0.2 0.2 0.2 Ra 3.2</small> <small>ANGLES IN DEGREES - TOLERANCES ±0.2mm ±0.5° - BREAK ALL EDGES</small>	Part No./Note : JTV-90-50
				Drawn by : Toofan Pour Drawn date : 13-9-2017 Checked by : Modified by : Modified date :	Customer : Reference : Weight in kg : Material/Size :

V-500-00 (JT-30 - 52mm)

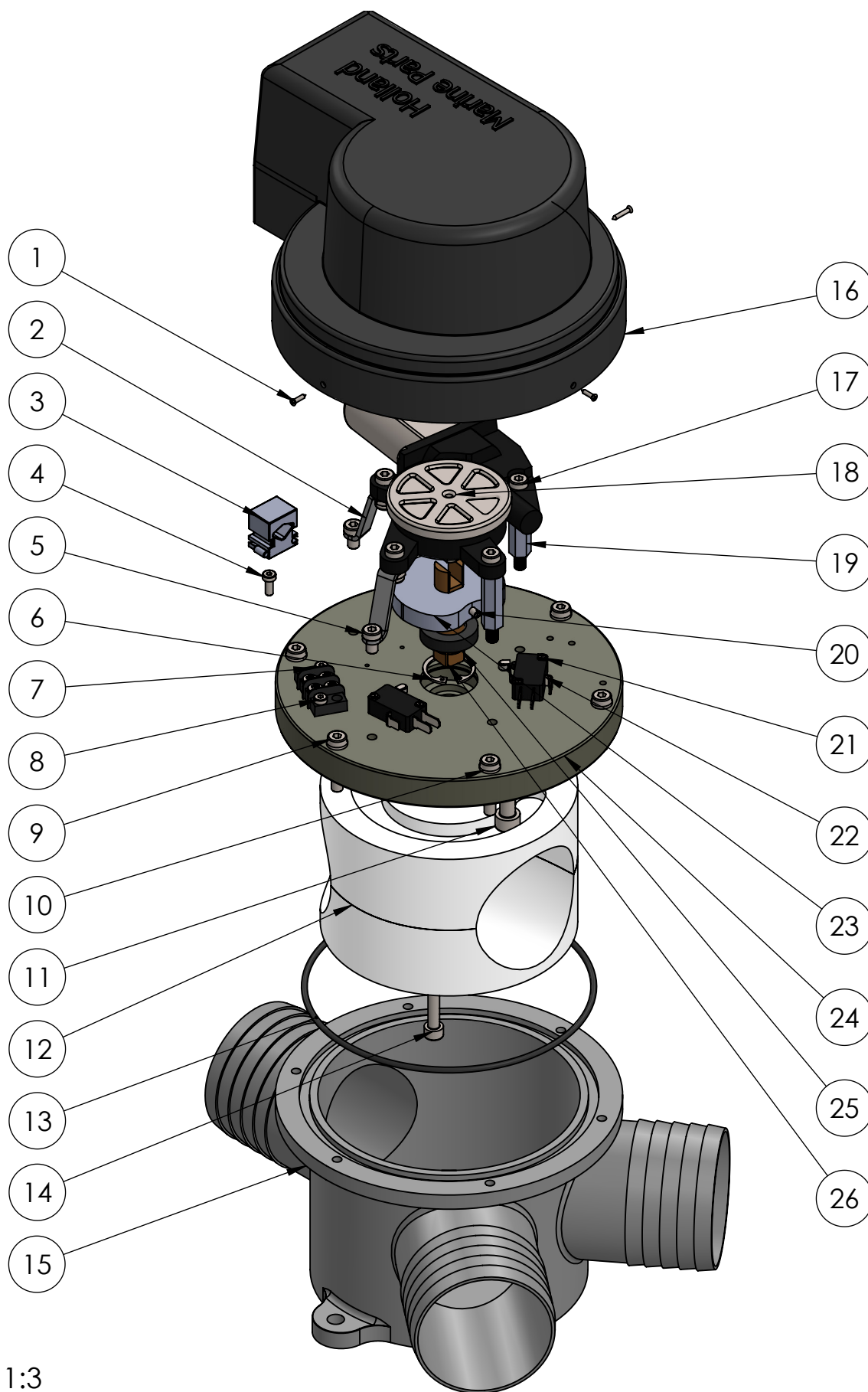


scale: 1:3

Pos.	Part Nr	Description	QTY.
1	F-301-00	Parker 2,9x10, DIN7981C	3
2	V-109-00	Steun Klepmotor 10x2,5 H=35 mm	2
3	E-025-00	Cable saddle clip	1
4	F-201-00	Inbusbout M4x10, DIN912	1
5	F-203-00	Inbusbout M6x10, DIN912	2
6	V-125-00	Circlip Ring for Valve	1
7	E-006-00	Connection Block 2-Way	1
8	E-019-00	Inbusbout M4x10	2
9	F-205-00	Inbusbout M6x30, DIN912	6
10	F-004-00	Sluitring M6, DIN125A	6
11	F-216-00	Inbusbout M8x10, DIN912-A4	1
12	V-111-00	Plunjer for Valve Gr1	1
13	V-104-00	O-ring 115x4 NBR70 for Valve Gr1	1
14	F-215-00	Inbusbout M6x55, DIN912 A4	2
15	V-501-00	Composite Valve Housing JT-30	1
16	V-103-00	Cover Valve JT30/JT50	1
17	F-204-00	Inbusbout M6x16, DIN912 A4	4
18	V-120-00	Valve motor 12V	1
19	V-701-00	Hexagonal Brass Standoff M6x35	2
20	F-010-00	Stelschroef M4x10, DIN916, A2	1
21	F-302-00	Parker 2,9x16, DIN7981C	4
22	E-034-00	Microswitch	2
23	V-119-00	Cam for position Valve Gr1+Gr2 (PLC)	1
24	V-103-00	Cover Valve JT30/JT50	1
25	V-117-00	Oil Seal for Valve Gr1+2	1
26	V-214-00	As tbv Klep Gr1+Gr2 VK16-12 L=59 mm	1


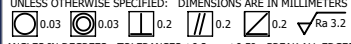

A3	Do NOT Scale	Scale: 1:3		<small>UNLESS OTHERWISE SPECIFIED: DIMENSIONS ARE IN MILLIMETERS</small> 	3-way valve JT-30 Composite (PLC)
				<small>ANGLES IN DEGREES - TOLERANCES ±0.2mm ±0.5° - BREAK ALL EDGES</small>	Part No./Note : V-500-00
				Drawn by : Toofan Pour Drawn date : 13-9-2017 Checked by : Modified by : 25-6-2018 Modified date :	Customer : Reference : Weight in kg : 3.95kg Material/Size :

V-100-58 (JT-50 - 58mm)

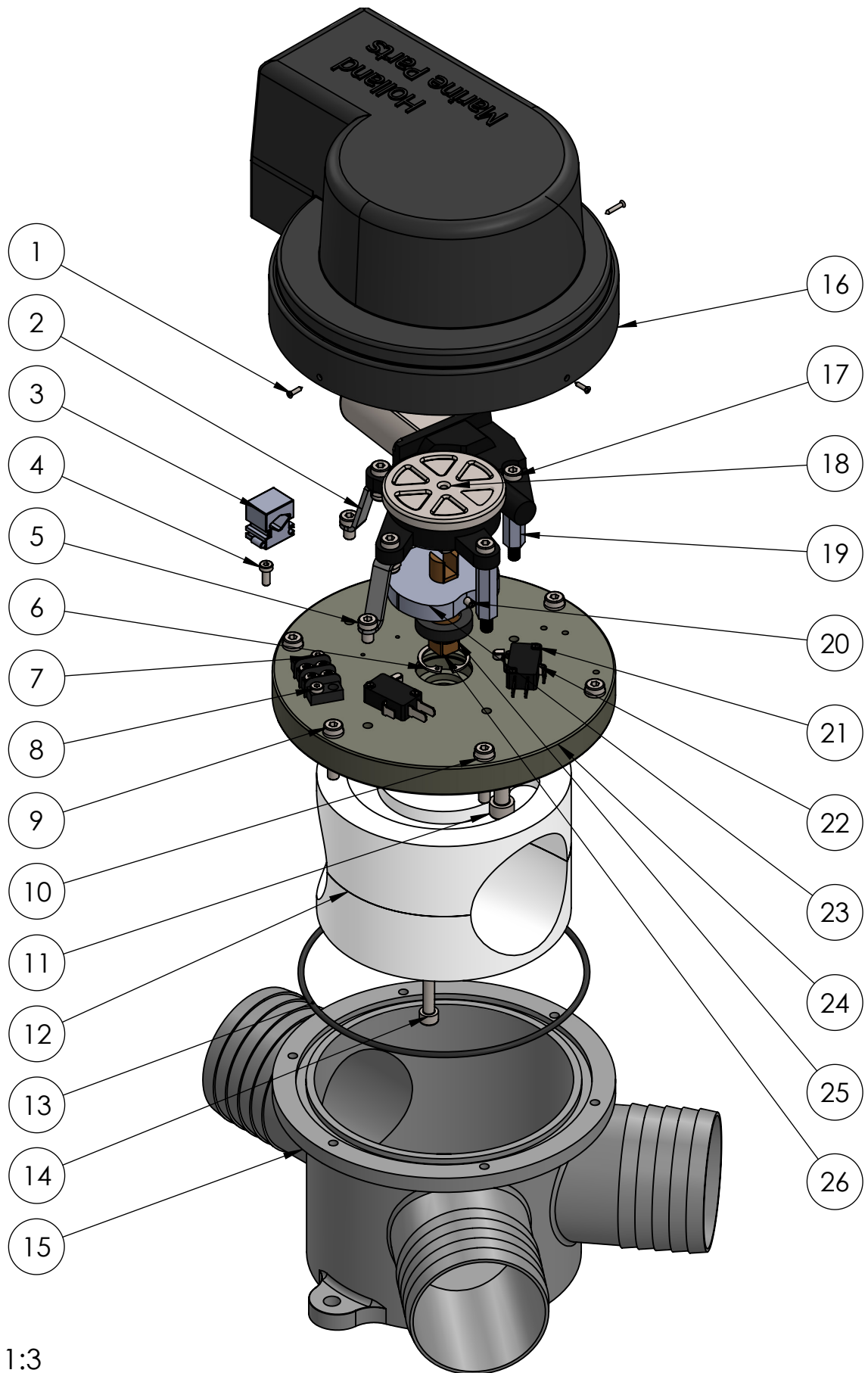


scale: 1:3


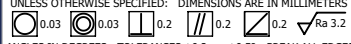

Pos.	Part Nr	Description	QTY.
1	F-301-00	Parker 2,9x10, DIN7981C	3
2	V-109-00	Steun Klepmotor 10x2,5 H=35 mm	2
3	E-025-00	Cable saddle clip	1
4	F-201-00	Inbusbout M4x10, DIN912	1
5	F-203-00	Inbusbout M6x10, DIN912	2
6	V-125-00	Circlip Ring for Valve	1
7	E-006-00	Connection Block 2-Way	1
8	E-019-00	Inbusbout M4x10	2
9	F-205-00	Inbusbout M6x30, DIN912	6
10	F-004-00	Sluitring M6, DIN125A	6
11	F-216-00	Inbusbout M8x10, DIN912-A4	1
12	V-511-00	Plunjer for Valve JT-50	1
13	V-104-00	O-ring 115x4 NBR70 for Valve Gr1	1
14	F-215-00	Inbusbout M6x55, DIN912 A4	2
15	V-105-00	Valve Housing JT-50	1
16	V-103-00	Cover Valve JT30/JT50	1
17	F-204-00	Inbusbout M6x16, DIN912 A4	4
18	V-120-00	Valve motor 12V	1
19	V-701-00	Hexagonal Brass Standoff M6x35	2
20	F-010-00	Stelschroef M4x10, DIN916, A2	1
21	F-302-00	Parker 2,9x16, DIN7981C	4
22	E-034-00	Microswitch	2
23	V-119-00	Cam for position Valve Gr1+Gr2 (PLC)	1
24	V-103-00	Cover Valve JT30/JT50	1
25	V-117-00	Oil Seal for Valve Gr1+2	1
26	V-214-00	As tbv Klep Gr1+Gr2 VK16-12 L=59 mm	1

A3	Do NOT Scale	Scale: 1:3		<small>UNLESS OTHERWISE SPECIFIED: DIMENSIONS ARE IN MILLIMETERS</small> 	3-way valve JT-50 (PLC)
				<small>ANGLES IN DEGREES - TOLERANCES ±0.2mm ±0.5° - BREAK ALL EDGES</small>	Part No./Note : V-100-58
				Drawn by : Toofan Pour Drawn date : 13-9-2017 Checked by : Modified by : 25-6-2018 Modified date :	Customer : Reference : Weight in kg : 5.5kg Material/Size :

V-200-50 (JT-70 & JT-90)



Pos.	Part Nr	Description	QTY.
1	F-301-00	Parker 2,9x10, DIN7981C	3
2	V-109-00	Steun Klepmotor 10x2,5 H=35 mm	2
3	E-025-00	Cable saddle clip	1
4	F-201-00	Inbusbout M4x10, DIN912	1
5	F-203-00	Inbusbout M6x10, DIN912	2
6	V-125-00	Circlip Ring for Valve	1
7	E-006-00	Connection Block 2-Way	1
8	E-019-00	Inbusbout M4x10	2
9	F-205-00	Inbusbout M6x30, DIN912	6
10	F-004-00	Sluitring M6, DIN125A	6
11	F-216-00	Inbusbout M8x10, DIN912-A4	1
12	V-211-00	Plunjer for Valve Gr2	1
13	V-104-00	O-ring 115x4 NBR70 for Valve Gr1	1
14	F-215-00	Inbusbout M6x55, DIN912 A4	2
15	V-201-00	Valve Housing Gr2	1
16	V-103-00	Cover Valve JT30/JT50	1
17	F-204-00	Inbusbout M6x16, DIN912 A4	4
18	V-120-00	Valve motor 12V	1
19	V-701-00	Hexagonal Brass Standoff M6x35	2
20	F-010-00	Stelschroef M4x10, DIN916, A2	1
21	F-302-00	Parker 2,9x16, DIN7981C	4
22	E-034-00	Microswitch	2
23	V-119-00	Cam for position Valve Gr1+Gr2 (PLC)	1
24	V-103-00	Cover Valve JT30/JT50	1
25	V-117-00	Oil Seal for Valve Gr1+2	1
26	V-214-00	As tbv Klep Gr1+Gr2 VK16-12 L=59 mm	1

A3	Do NOT Scale	Scale: 1:3		<small>UNLESS OTHERWISE SPECIFIED: DIMENSIONS ARE IN MILLIMETERS</small> 	3-way valve JT-70 & JT-90 (PLC)
				<small>ANGLES IN DEGREES - TOLERANCES ±0.2mm ±0.5° - BREAK ALL EDGES</small>	Part No./Note : V-200-50
				Drawn by : Toofan Pour Drawn date : 13-9-2017 Checked by : Modified by : 25-6-2018 Modified date :	Customer : Reference : Weight in kg : 8kg Material/Size :



All our products are manufactured according to CE regulations.
We keep the rights to change descriptions, graphs or statements,
which are required for technical development of our Jet Thruster systems.
