

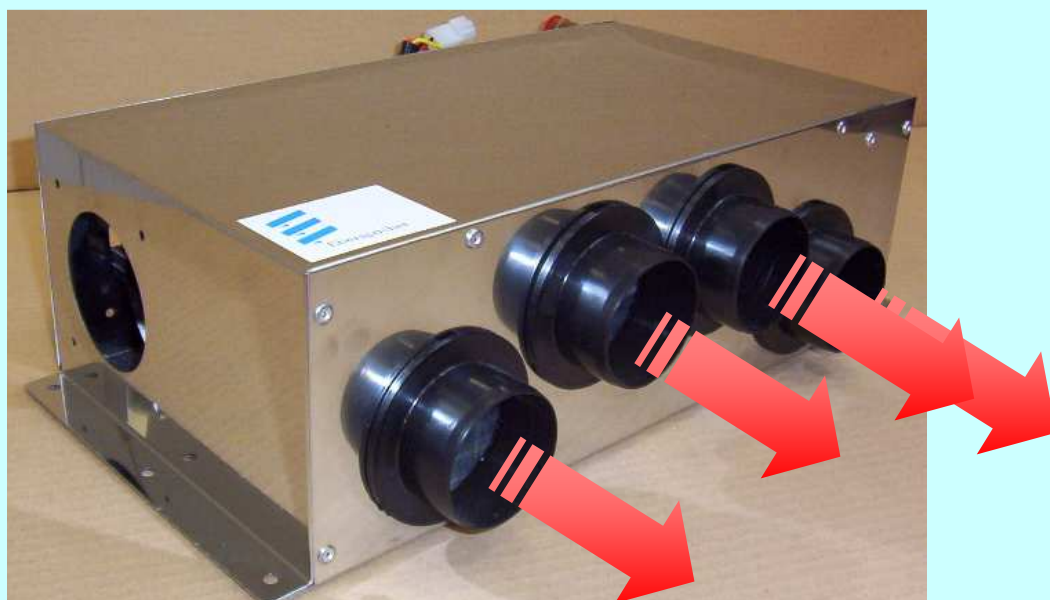
INSTALLATION INSTRUCTIONS

EBERSPACHER SAS
3 rue Blaise Pascal
ZAC La Clé Saint Pierre
78996 Elancourt Cedex
FRANCE

Hot line :
00 33 1 30 68 54 78
Fax :
00 33 1 30 68 54 55

www.eberspacher.fr

BLOWER HEATER 10.000 W / REF 282 113 100C (12V) 282 113 200C (24V)



1 TECHNICAL DATAS

The blower heater is delivered with four connections Ø 60mm for the warm outlet air as standards.

The cover is made off stainless plate.

The heat exchanger has copper pipes and aluminium disks and is designed to give the best possible heat transfer from water to air.

The maximum pressure in the water circuit is 2,5 bar.

The fan consists of a two step fan motor with two turbine wheels. The bearings are of slide bearing type.

The air inlets can be placed either on the sides or on the back of the unit.

CHARACTERISTICS

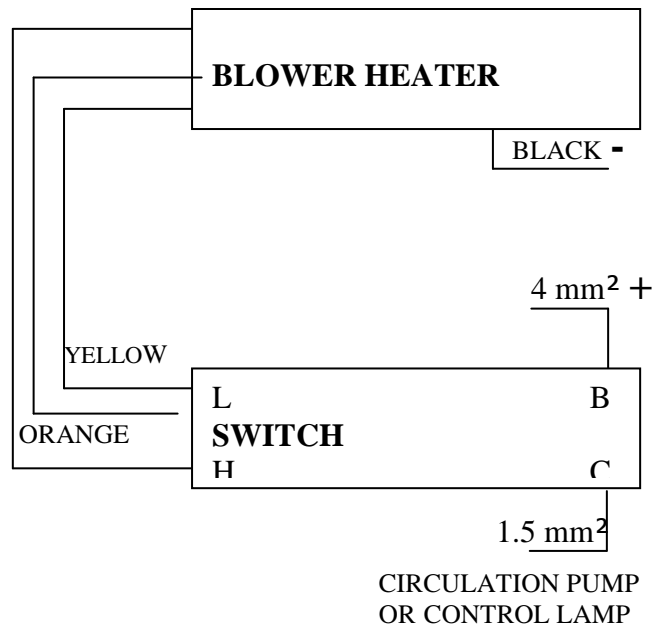
Heating capacity	10 kW at $\Delta t = 80^{\circ}\text{c}$
Air flow	310 m ³ /h & 170 m ³ /h
Intensity	9,7A / 3,8A
Voltage	12V
Weight	6,0kg
Dimensions	L = 440, B/W=220, H=130mm
Water connections	Ø 16mm
Max pressure	2,5 bars

2 FUNCTION

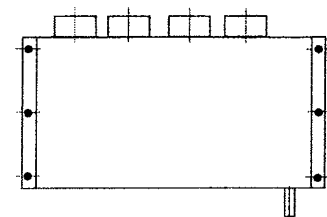
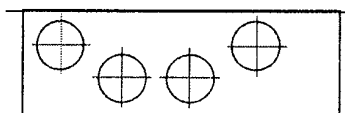
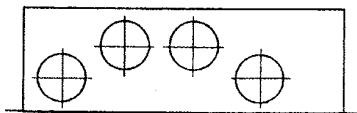
The heater is operated by a switch or a cabin thermostat. See separate electrical wiring diagram.

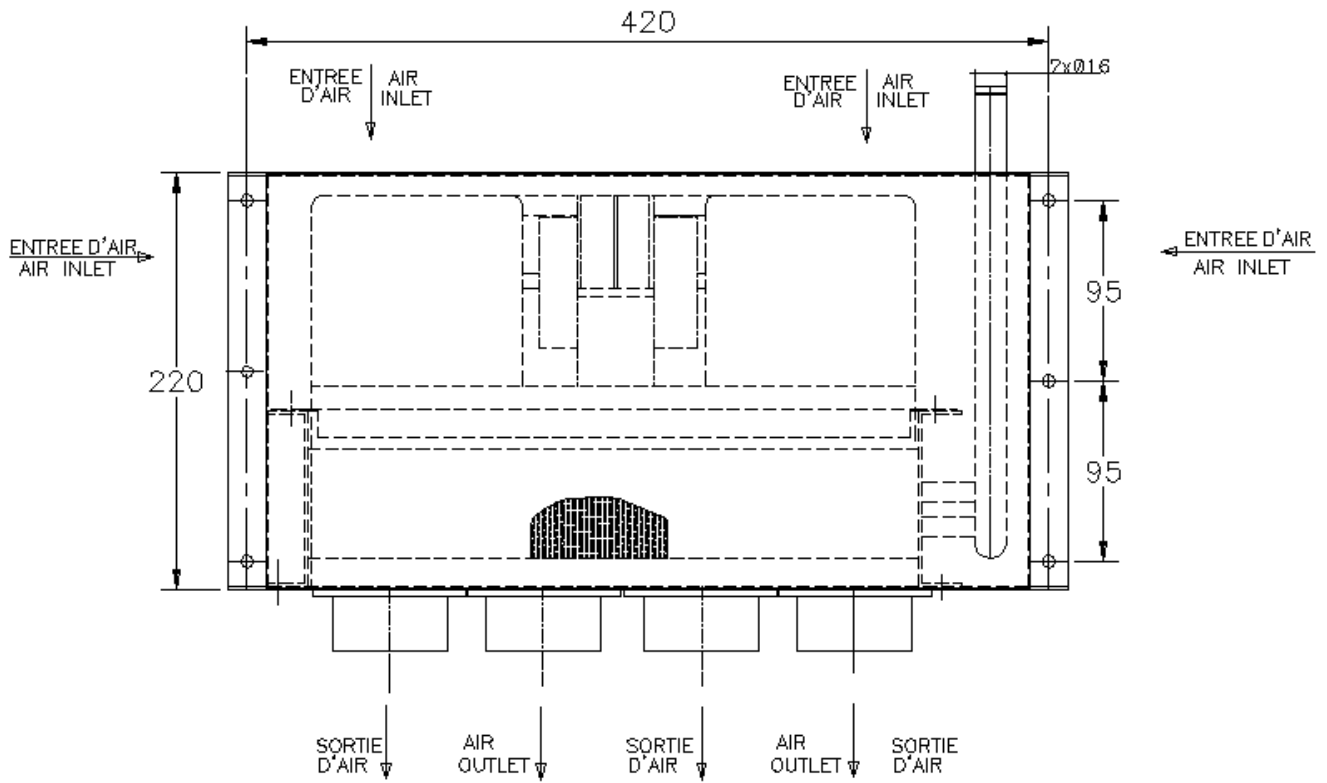
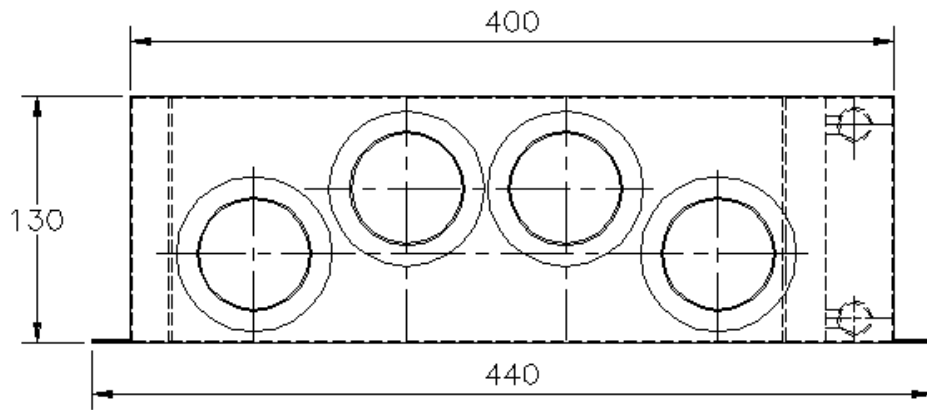
Electrical connection : The unit is fitted with three connection cables : Yellow, orange and black.

NOTE : FOR FULL SAFETY USE 16A FUSE.



POSSIBLE MOUNTING POSITIONS



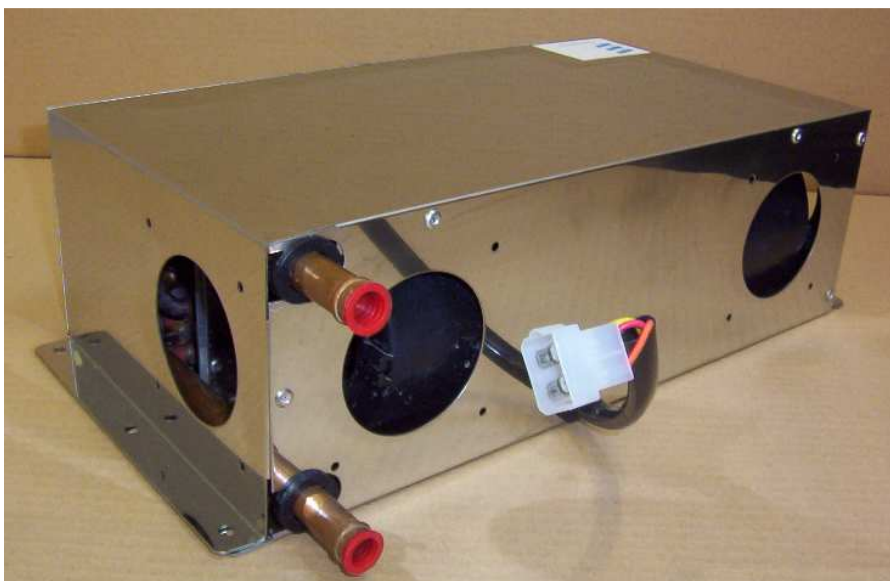
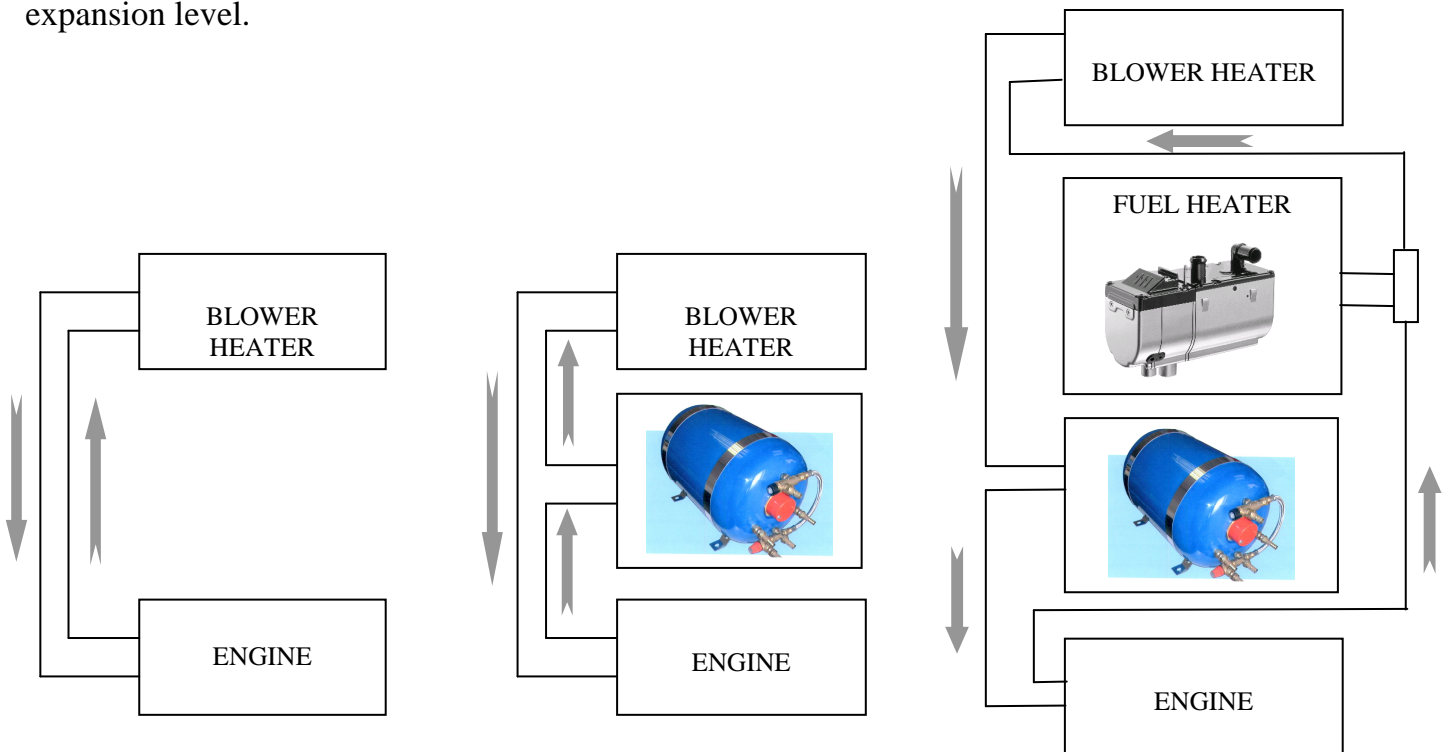


3 WATER CONNECTION

WARNING :

- **Blower heater unit to be connected to fresh water cooled engines only.**
- **Reinforced rubber hoses of approved type, inner diameter 16mm must be used**

For best capacity and water circulation, the warm air unit must be installed lower than the engine expansion level.

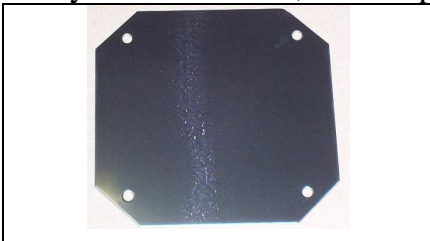


4 ACCESSORIES



117045000 Switch (included in the main cardbox)

For your installation, we can provide you many possibilities :



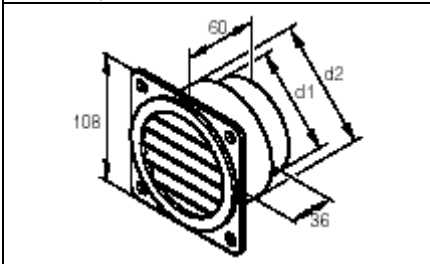
162261400B Blind plates (+ screws)



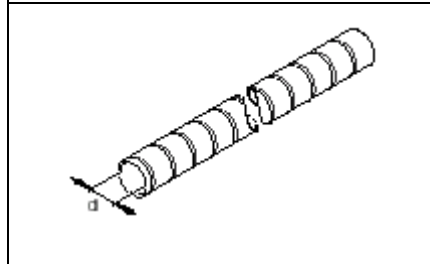
65727 Air inlet Ø75



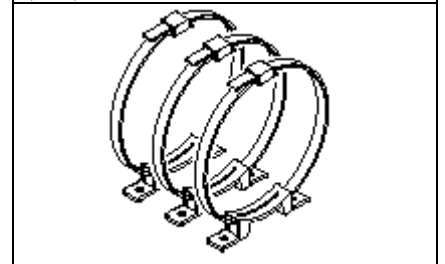
104542000 Cable harness (5m)



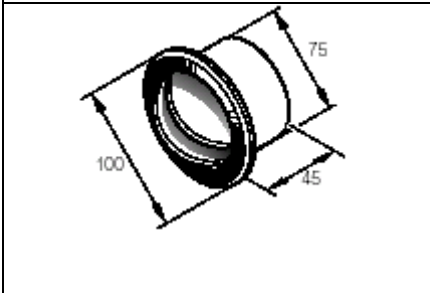
221050892100 : Outlet grid Ø75 rotatable



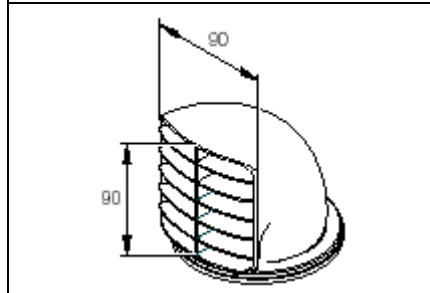
174025000 Flexible pipe Ø75



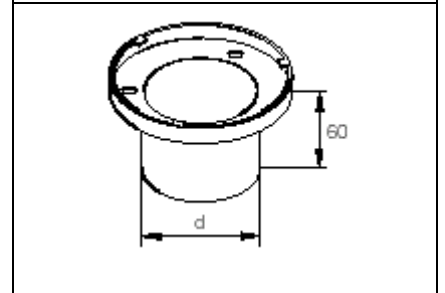
36000131 Air hose fastener (x3)



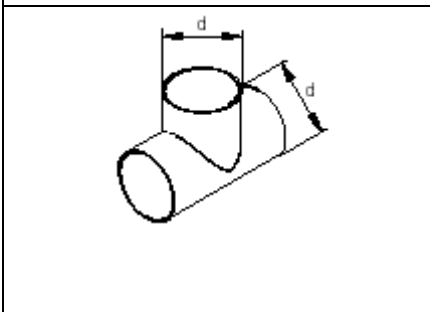
33031311 Round outlet, rotatable & closable



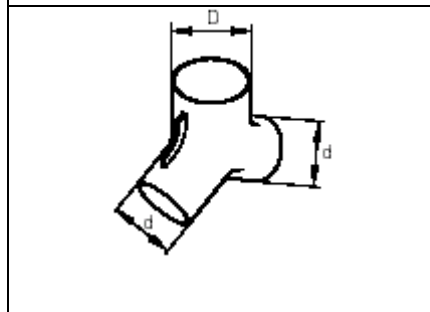
201716800002 Exhauster



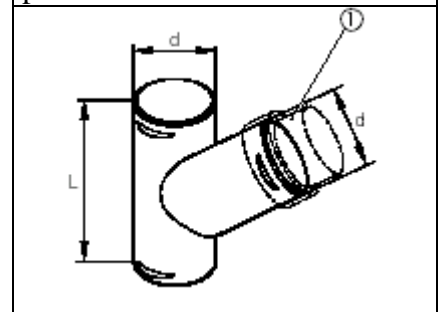
251794800001 Connecting part for exhauster Ø75



251482890700 T piece Ø75



251482800800 Y- pipe



251226890044 Y-pipe