



SOUND SIGNALING EQUIPMENT
Accessories - Air Compressors

Model P449-20 Air Compressor Kit

The Kahlenberg P449-20 Compressed Air Kit is a quiet, oil-less compressor solution incorporating a compact, intermittent duty compressor pump, pressure switch, air gauge, and all tubing and fittings specifically arranged for marine use.



Technical Details

Voltage: 12 V.D.C.

Max Current: 20A @12 Volts

FAD @ 7 bar: .58 CFM, 16.5 l/min

Max Pressure: 130 p.s.i., 8.9 bar

Weight: 7 lbs., 3 kg, Compressor and Tank

Noise Level: 69 dB(A)@ 1 meter

Duty Cycle: 15% @ 100 p.s.i.

Vibration Isolated: Yes

Wire Size: 14 AWG min.

Features and benefits of the P449-20 include:



Quiet Operation: 69dB(A) @ 1 meter



Oil-less Operation:

Minimizes maintenance by eliminating oil in air lines.



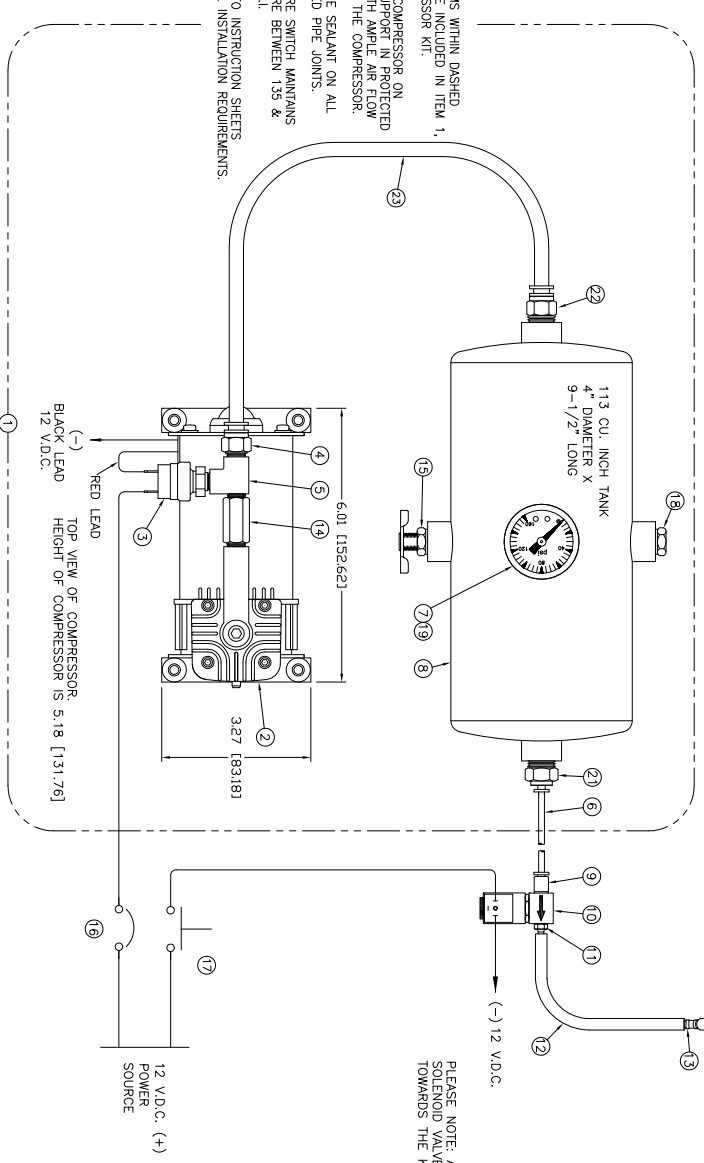
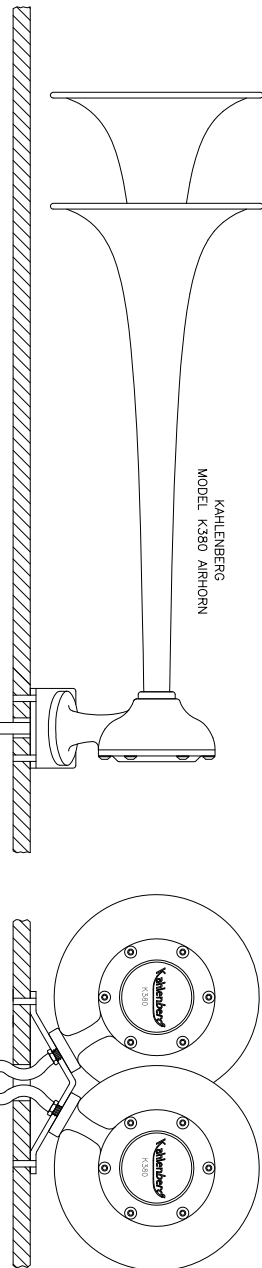
Easy Installation:

Fittings, air tank, and tubing are supplied, as are safety valve and air gauge. All fittings are instant connect. The only wiring required is connection of the compressor assembly to line voltage.

The P449-20 Compressor System provides output sufficient for Kahlenberg Air Horn Models K-460 and K-380

Kahlenberg Industries, Inc.
1700 12th Street, P.O. Box 358
Two Rivers, WI 54241 U.S.A.

www.kahlenberg.com



CURRENT REQUIREMENTS	
12 VOLT	20.0 AMP
C.F.M. OUTPUT @ 0 P.S.I.	
12 VOLT	1.38 C.F.M.

REV.	BY	DATE	DESCRIPTION	APP'D.
A	ZJN	08/03/07	ADDED ITEMS 18, 19, 20 & 21	EMK
B	ZJN	09/11/07	CHANGED QUANTITY OF ITEM 4 FROM 3 PCS TO 1 PLACED CHECK VALVE (ITEM 14) BEFORE PRESSURE SWITCH & TEE (ITEMS 3 & 5)	EMK
C	ZJN	06/09/08	MAINTAIN PRESSURE WAS BETWEEN 135 & 110 PSI	EMK
D	ZJN	10/15/08	ITEM 4 WAS P516-19, ITEM 21 QUANTITY WAS 2, ADDED ITEM 22, ADDED ITEM 23	EMK
E	ZJN	01/27/10	ITEM 11 WAS P516-20, ITEM 13 WAS P516-21	EMK
F	ZJN	01/15/13	ITEM 9 WAS P516-18 ITEM 10 WAS P-170 ITEM 11 WAS P516-35	EMK

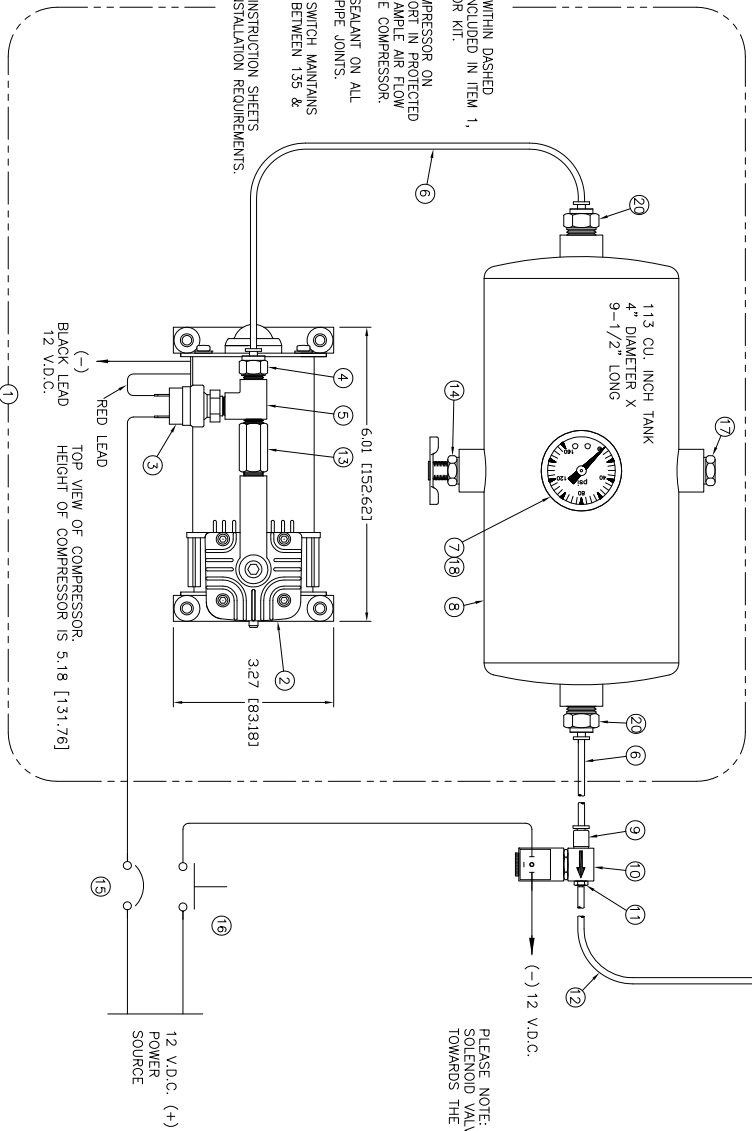
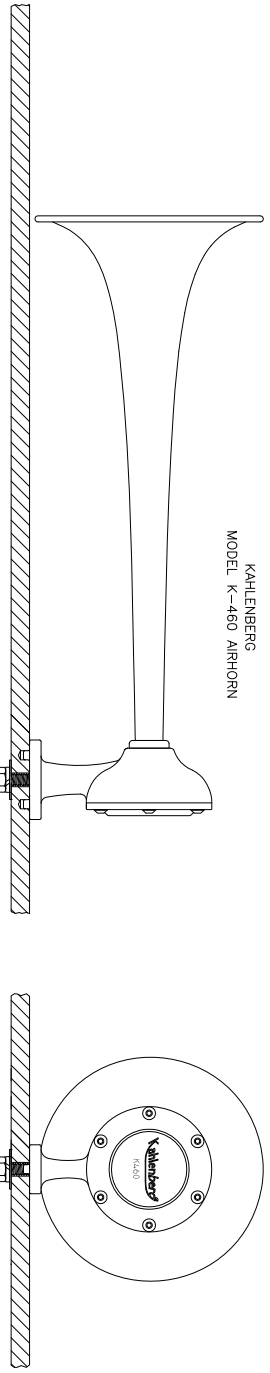
NO.	PART NO.	DESCRIPTION	QTY.
1	P449-20	COMPRESSOR KIT, 12 V.D.C.	1
2	P449-19	COMPRESSOR UNIT ONLY, 12 V.D.C.	1
3	PT148-002	PRESSURE SWITCH	1
4	P516-03	CONNECTOR, MALE, 1/8" N.P.T. X 5/16" O.D. TUBE	1
5	P538-01	TEE FITTING, 1/8" N.P.T., M.F.F.	1
6	PT130-012	TUBING, NYLON, BLACK, 1/8" O.D.	10'
7	M-140	PRESSURE GAUGE	1
8	P521-07	AIR RECEIVER	1
9	P516-19	CONNECTOR, MALE, 1/8" N.P.T. X 1/8" O.D. TUBE	1
10	V-69	SOLENOID VALVE, 1/8" N.P.T., 12 V.D.C.	1
11	P516-36	CONNECTOR, 1/8" N.P.T. X 1/8" I.D. TUBE, BARBED	1
12	PT130-14	TUBING, P.V.C., CLEAR, 1/8" I.D.	3'
13	P516-34	CONNECTOR, "M", 1/8" I.D. TUBE, BARBED	1
14	V-62	CHECK VALVE, 1/8" N.P.T.	1
15	D176-2	PETCOCK VALVE, 1/4" N.P.T.	1
16	CUSTOMER SUPPLIED BREAKER	25 AMP FOR 12 VDC COMPRESSOR	1
17	M-126	MOMENTARY PUSH BUTTON SWITCH, S.P.S.T.	1
18	PI27-02	PIPE PLUG, HEX HEAD, 1/4" N.P.T.	1
19	PT134-004	BUSHING, REDUCER, 1/4" TO 1/8" N.P.T.	1
20	W078-036SS	WASHER, FENDER, 1/4" (FOR MOUNTING TANK NOT ILLUSTRATED)	2
21	P516-22	CONNECTOR, MALE, 1/4" N.P.T. X 1/8" O.D. TUBE	1
22	P516-05	CONNECTOR, MALE, 1/4" N.P.T. X 5/16" O.D. TUBE	1
23	PT130-004	TUBING, NYLON, BLACK, 5/16" O.D.	5'

Kahlberg
 KAHLEBERG INDUSTRIES, INC. TWO RIVERS, WI., U.S.A.

INSTALLATION (SUGGESTED)
 & PARTS LIST FOR
 K380 AIRHORN SYSTEM

DR.	DATE	CK'D.	SCALE	DRWG. NO.	REV.
ZJN	08/16/06	EMK	N.T.S.	3-6406	F

KAHLEBERG
MODEL K-460 AIRHORN



ALL ITEMS WITHIN DASHED LINE ARE INCLUDED IN ITEM 1, COMPRESSOR KIT.
MOUNT COMPRESSOR ON RIGID SUPPORT IN PROTECTED AREA WITH AMPLE AIR FLOW AROUND THE COMPRESSOR. USE PIPE SEALANT ON ALL THREADED PIPE JOINTS.
PRESSURE SWITCH MAINTAINS PRESSURE BETWEEN 135 & 110 P.S.I.
REFER TO INSTRUCTION SHEETS FOR ALL INSTALLATION REQUIREMENTS.

PLEASE NOTE: ARROW ON SOLENOID VALVE POINTS TOWARDS THE K-460 AIRHORN

CURRENT REQUIREMENTS	12 VOLT 20.0 AMP
C.F.M. OUTPUT @ 0 P.S.I.	12 VOLT 1.38 C.F.M.

REV.	BY	DATE	DESCRIPTION	APP'D.
A	ZN	01/15/13	ITEM 9 WAS P516-18 ITEM 10 WAS V-170 ITEM 11 WAS P516-20 ITEM 12 WAS PT130-11	EMK

NO.	PART NO.	DESCRIPTION	QTY.
1	P449-20	COMPRESSOR KIT, 12 V.D.C.	1
2	P449-19	COMPRESSOR UNIT ONLY, 12 V.D.C.	1
3	PT148-002	PRESSURE SWITCH	1
4	P516-19	CONNECTOR, MALE, 1/8" N.P.T. X 1/8" O.D. TUBE	1
5	P538-01	TEE FITTING, 1/8" N.P.T. M.F.	1
6	PT130-012	TUBING, NYLON, BLACK, 1/8" O.D.	15'
7	M-140	PRESSURE GAUGE	1
8	P521-07	AIR RECEIVER	1
9	P516-19	CONNECTOR, MALE, 1/8" NPT X 1/8" O.D. TUBE	1
10	V-69	SOLENOID VALVE, 1/8" NPT, 12 V.D.C.	1
11	P516-36	CONNECTOR, 1/8" NPT X 1/8" I.D. TUBE, BARBED	1
12	PT130-14	TUBING, PVC, CLEAR, 1/8" I.D.	3'
13	V-62	CHECK VALVE, 1/8" N.P.T.	1
14	D176-2	PETCOCK VALVE, 1/4" N.P.T.	1
15	CUSTOMER SUPPLIED BREAKER	25 AMP FOR 12 VDC COMPRESSOR	1
16	M-126	MOMENTARY PUSH BUTTON SWITCH, S.P.S.T.	1
17	P127-02	PIPE PLUG, HEX HEAD, 1/4" N.P.T.	1
18	PT134-004	BUSHING, REDUCER, 1/4" TO 1/8" N.P.T.	1
19	W078-0365S	WASHER, FENDER, 1/4" (FOR MOUNTING TANK, NOT ILLUSTRATED)	2
20	P516-22	CONNECTOR, MALE, 1/4" N.P.T. X 1/8" O.D. TUBE	2

Kahlenberg
KAHLEBERG INDUSTRIES INC. TWO RIVERS, WI. U.S.A.

INSTALLATION (SUGGESTED)
& PARTS LIST FOR
K-460 AIRHORN SYSTEM

DR.	DATE	CKD.	SCALE	DRWG. NO.	REV.
ZJN	12/02/07	EMK	N.T.S.	3-6466	A