

# LTC PROMARINE 1111

## User Manual



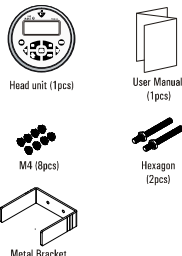
**IPX6 Waterproof Round Radio, With BT Audio Streaming**



**PROMARINE 1111**  
IPX6 Waterproof Round Radio, With BT Audio Streaming



### Contents

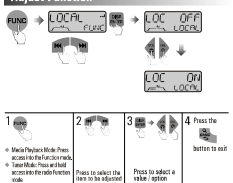


### Key Functions



- Short press to mute or restore volume.
- Turn the unit on, Press and hold again to turn the unit off.
- Press to pause, Press again to resume playback.
- Tune Mode: Press to enter into the Manual Seek mode, press and hold to enter into the Auto-Seek mode.
- Media Playback Mode: Press to track Up/Down, press and hold for full track backward.
- SRCH: Select the available Source.
- Tuner Mode: Short press to recall the preset stations, press and hold to access into the radio functions mode.
- Media Playback Mode: Press to access into the Function mode.
- Press to decrease the volume, press to increase the volume.
- Tune Mode: To change different Band, Press and hold to access into Auto-Seek mode, the strongest station of the selected band will be saved in preset channel automatically.
- Media Playback Mode: Press to access into search folder file music mode.
- Returns to the previous item.
- Tune Mode: Press to view RDS received information.
- Media Playback: Press to view ID3 information.
- Press to access into the Audio Mode mode to adjust the options: (EQ) BASS, BASS1, MIDBASS, MIDBASS2, BALANCE, FADER1, REAR OUT, SUBWO, PT, SUBW LEVEL.
- Press and hold to access into the System Menu.

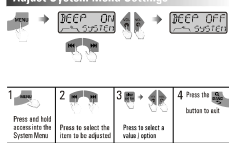
### Adjust Function



### When you press or hold the following buttons...

Media Playback Mode	Selectable setting
Repeat	<ul style="list-style-type: none"> <li>ALL: to repeat all tracks on the storage media</li> <li>Song: the current track will be repeated</li> <li>Folder: repeats all tracks in the current folder</li> </ul>
Random On/Off	This function allows you to play tracks/shuffle from the current album, songs or artists in a random order.
Tuner Mode	Selectable setting
Auto Store	Press to access into Auto Store mode, the strongest station of the selected band will be saved in preset channel automatically.
Manual store	When one expected radio station has been detected, press to store it in the memory.
Local On/Off	<ul style="list-style-type: none"> <li>ON: only stations with strong signal can be broadcast. The Local indicator will light up</li> <li>OFF: Stations of both strong and weak signals can be broadcast.</li> </ul>
Area	Select suitable country area for this unit: EUROPE, RUSSIA, JAPAN, LATIN, MIDDLECAST, OCEANIA, USA, ASIA
RDS On/Off	Turn On or Off the RDS function.
AF On/Off	<ul style="list-style-type: none"> <li>ON: The unit will search for another station with stronger signal, but with the same program identification as the current station automatically.</li> <li>OFF: Turn off AF function.</li> </ul>
TA On/Off	<ul style="list-style-type: none"> <li>ON: When there is traffic announcement, unit will automatically switch to the tuner mode (regardless of the current mode) and begins to broadcast the announcement as the current mode and continues to broadcast the announcement as the current mode automatically.</li> <li>OFF: Traffic announcement does not cut in.</li> </ul>
PTY	Once inside the PTY mode, press the get into program type item, and press [M] or [W] to selected category: <ul style="list-style-type: none"> <li>Available Program Type: POP, MC, ROCK, M, EASY M, LIGHT M, CLASSICS, OTHER M, JAZZ, M, COUNTRY, NATIVE M, OLDIES M, FOLK M, A-TEST, ALARM, NEWS, AFFAIRS, INFOS, SPORT, EDUCATE, DRAMA, CULTURE, SCIENCE, VARIOUS, WEATHER, FRANCE, CHILDREN, SOCIAL, RELIGION, PHONE IN, TRAVEL, LEISURE, DOCUMENT</li> </ul>

### Adjust System Menu Settings



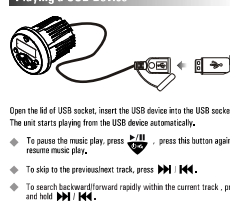
### When you press or hold the following buttons...

Item	Selectable setting
BT DISCO	This feature allows to disconnect or disconnect to the paired mobile phone or Bluetooth device manually.
BEEP ON	Turn On or Off this beep sound.
RESET	To restore the factory default settings.
ABOUT	To view the device hardware and software versions.

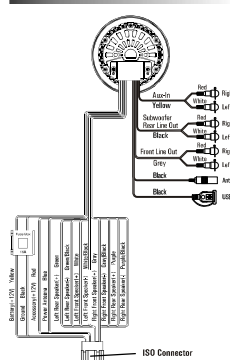
### Use Bluetooth Device

- Pairing the Bluetooth device**  
On your Bluetooth-enabled device, follow the steps below,
  - Search for Bluetooth devices.
  - In the device list, select **MG0001**
  - CONNECTED** will appear on the display.
  - The unit will automatically enter the BT Audio source and you can now start streaming audio from your Bluetooth enabled device.
- If the mobile phone doesn't support SSP (Simple Secure Pairing Profile), please enter the pass code of "0000".
- Bluetooth Audio Streaming A2DP**  
If the connected Bluetooth device supports Advanced Audio Distribution Profile (A2DP), you can listen to the music stored on the device through the unit. If the device also supports Audio Video Remote Control Profile (AVRCP) profile, you can use the control on the unit or its remote control to play music stored on the device.
  - Press **SRCH** repeatedly to select **BT AUDIO**.
  - Press **▶/▶** to start play, press it again to pause.
  - To track up/down, press **▶/▶**.
  - Press **▶/▶** to view song file information.

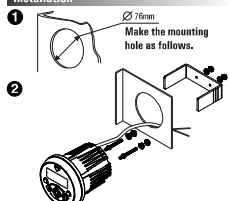
### Playing a USB Device



### Wire Connection



### Installation



### Specification

<b>FM Tuner</b>	Frequency Range.....87.5 - 108MHz
	Useable Sensitivity.....12dB (SN - 30dB)
<b>AM Tuner</b>	Frequency Range.....522 - 1620KHz
	Useable Sensitivity.....40dB(S/N - 20dB)
<b>USB</b>	USB.....2.0 High Speed
	USB Memory Size.....32G
<b>Bluetooth</b>	Output Power.....Class 2
	Frequency Band.....2.402GHz - 2.48GHz ISM Band
	Range.....2 Meters (Free-Space)
	Standard.....Bluetooth 2.1 Specification + EDR/V2.0
<b>Aux In</b>	Aux In Level.....600mV
	Frequency response.....20Hz - 20kHz
	Signal/Noise Rate.....> 55dB
	Distortion.....0.5%
<b>General</b>	Maximum Power.....65Wx4
	Power Supply Voltage.....14V DC (1.6A to 15.6V allowable)
	Grounding System.....Negative Ground
	Speaker Impedance.....4 - 8 ohms per channel
	Pre-AMP Output Voltage.....1.7V
<b>MP3/WMA mode</b>	MP3 sampling rate.....32kHz, 44.1kHz, 48kHz
	MP3 bit rate.....32 - 384kbps
	WMA bit rate.....3 - 370kbps
	Logical format.....ISO9660, Joliet
	Number of file.....Maximum 65535
	Max directory depth.....8
	Max File/Directory Name.....64byte
	ID3 tag.....V2.0 or later

Size: 44x210mm (After Folding Size: 74x105mm)

