



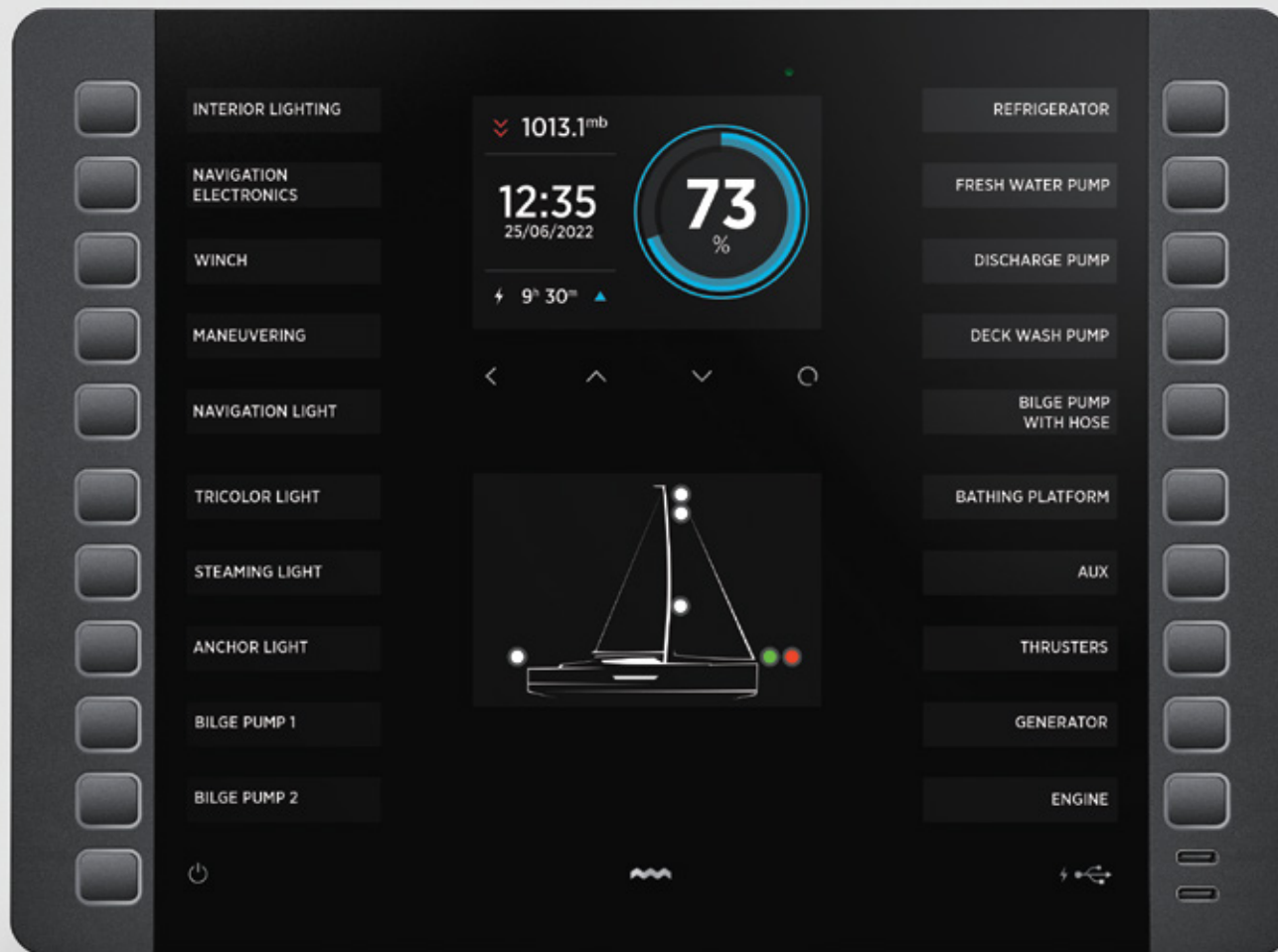
SIMARINE



# NEREIDE 2&3

Digital switching solutions for yachts







S I M A R I N E

# It's all about **CUSTOMIZATION**

**Nereide 3** is a cutting-edge digital switching solution and a true innovation in customization on the marine market.

It offers customization of **20 button labels** on the control panel. You decide the order of the devices you want to monitor and control, you decide the language to write in, and even the names - be creative! Make it as unique as your nautical adventures.

**Configuration is quick and easy thanks to the Nereide configurator.**

# A PERFECT solution for YACHTS

Inspired by the DAME Design Awards category winner Nereide 1, the younger Simarine family member **Nereide 2** was born.

On the outside, you see a captivating combination of aluminum tactile buttons and a digital display.

On the back, the Nereide 2 combines an advanced battery monitoring system, a control panel and a power unit.

Unlike the previous generation, the Nereide 2 control panel is separate from the power unit. This makes it even easier to install.

Wiring via industry-standard connectors also simplifies installation.







## Nereide 3's KEY FEATURES

- 1 Fully customizable with digital labels.
- 2 80% lower power consumption than other digital switching solutions currently on the market.
- 3 Environment friendly materials - aluminum, glass, and green plastic.
- 4 Quick and simple configuration.
- 5 Optional AC distribution system with motorized automatic circuit breakers.
- 6 N2K compatible.





## Nereide 2's KEY FEATURES

- 1 Custom printed layout.
- 2 80% lower power consumption than other digital switching solutions currently on the market.
- 3 Environment friendly materials - aluminum, glass and green plastic
- 4 Integrated remote battery switch and bilge pump control.
- 5 Optional AC distribution system with motorized automatic circuit breakers.
- 6 N2K compatible.

A close-up photograph of a dark grey control panel. Three rectangular buttons with rounded corners are arranged vertically. To the left of each button is a white label in a bold, italicized sans-serif font. The top button is labeled 'MANEUVERING', the middle one 'REFRIGERATOR', and the bottom one 'HYDRAULIC'. A small green LED indicator light is visible on the left side of the panel, above the 'MANEUVERING' label. On the right side, a gold-colored metal pin or connector is visible, protruding from the panel's edge.

*MANEUVERING*

*REFRIGERATOR*

*HYDRAULIC*





# TOUCH and FEEL

aluminum tactile buttons combined with a digital display.

# SIMPLE and QUICK configuration

Of button labels. And outputs.

Button labels can be defined either statically or dynamically by combining multiple functions under a single button.

Set multiple languages and easily switch between them.



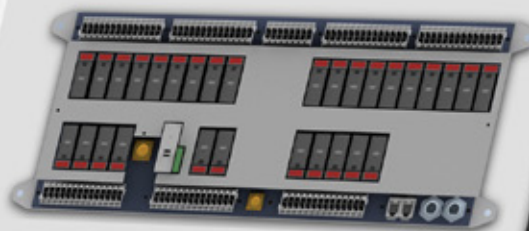


File Settings Help

Vehicle Control Panel

DC Power Unit

AC Distribution Unit



### Heater

Vehicle Panel 1

#### BUTTON

Title Heater

#### TYPE

Toggle

Memory

#### OUTPUTS

Connected outputs

#### RECLOSERS

Connected reclosers

6

3

#### LANGUAGES

Language

Value

English Heater

German Heating

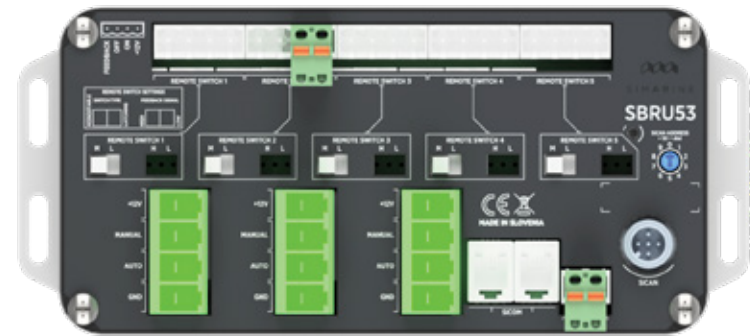
Swedish Gelfe

Chinese Gelfe

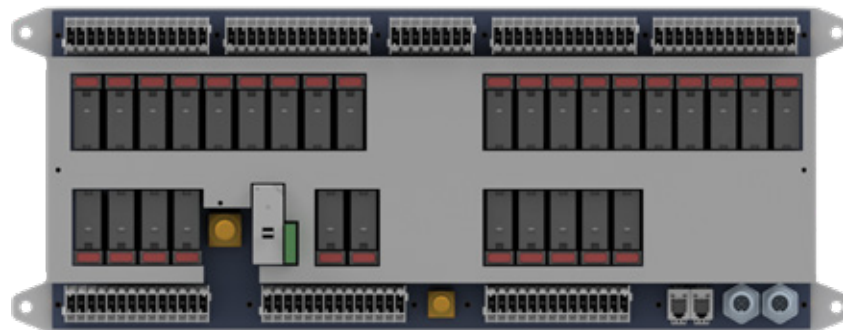
Both Nereide 2  
and 3 are  
**COMPATIBLE**  
with the following  
units



**AC Distribution Unit SAC05**  
with Motorized Automatic Circuit Breakers



**Remote Switch and Bilge  
Pump Unit SBRU53**



**DC Distribution Unit SPU304**  
with Manual Override Switches and Channel  
Current Monitoring



# 80 % LOWER power consumption

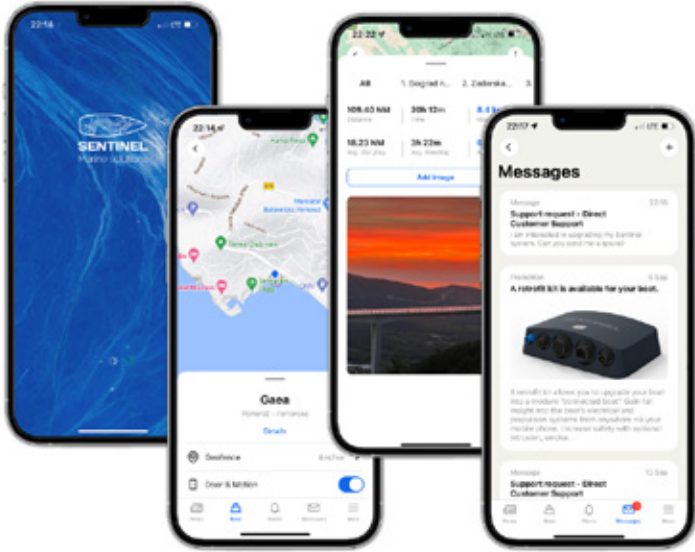
The **NEREIDE 3** complete system consumes **250 mA on average**, which is **80% less** than the other digital switching solutions currently on the market.

When set in power saving mode, the system consumes only 5 mA.  
And still it provides comprehensive remote monitoring and management functions.



# With CARE for THE EARTH in mind

All housings are built from green materials only – aluminum, glass, and recyclable plastic.



# REMOTE MANAGEMENT with the Sentinel Marine BM-50

Plug and Play compatible with the renowned Remote Management System by Sentinel Marine.



**NEREIDE 3**

# NEREIDE 3

## Operating

Power source voltage range	6 - 35 V DC
Temperature range	-20 - +70 °C

## Power consumption at 12 V

Operating, WiFi On, 100% illumination	190 mA
Operating, WiFi Off, 70% illumination	80 mA
Operating, WiFi Off, 0% illumination	25 mA
Off, logger still active	10 mA

## Resolution

Current (A)	±0,01 A
Voltage (V)	±0,01 V
Amp hours (Ah)	±0,1 Ah
SOC - Stat of Charge ( 0 - 100%)	±0,1 %

## Wi-Fi

Radio Frequency Band	2,4 GHz
----------------------	---------

## Dimensions with connector

Nereide 3 - Control Panel	270 x 200 x 40 mm
---------------------------	-------------------

## Connectivity

Batteries	6
Shunts	24
Temperature sensors	10
Tank level sensors	14
Inclinometer sensors	2
Smartphone application	2

SAC05	10
SPU303	10
SRB18 / SRB530	10
Logger Capacity (for battery)	up to 3 years

## Switches

Customizable switches	20
Submenu for each configured switch	19

## Output

2x USB 3.0	1 A
------------	-----

## Power consumption at 5V



**NEREIDE 2**

# NEREIDE 2

## Operating

Power source voltage range	6 - 35 V DC
Temperature range	-20 - +70 °C

## Power consumption at 12 V

Operating, WiFi On, 100% illumination	190 mA
Operating, WiFi Off, 70% illumination	80 mA
Operating, WiFi Off, 0% illumination	25 mA
Off, logger still active	22 mA

## Resolution

Current (A)	±0,1 A (1%)
Voltage (V)	±0,1 A (1%)

## Range

Voltage inputs	0 - 75V DC
Ohmmeter	0 - 65535 Ohm

## Wi-Fi

Radio Frequency Band	2,4 GHz
----------------------	---------

## Dimensions with connector

Nereide 2 - Control Panel	210 x 210 x 40 mm
---------------------------	-------------------

## Connectivity

Batteries	6
Shunts	24
Temperature sensors	10
Tank level sensors	14
Inclinometer sensors	2
Smartphone application	2

SAC05	10
SPU303	10
SRB518/SRB530	10
Logger Capacity	up to 3 years

## Switches

Switches (left & right side)	18 + 1 (power) = 19
------------------------------	---------------------

## Output

2x USB 3.0	1 A
------------	-----

## Power consumption at 5V



# SAC05

## Operating

Power source voltage range	6 - 35 V DC
Temperature range	-20 - +70 °C

## Power consumption at 12 V

Operating, WiFi On, 100% illumination	190 mA
Operating, WiFi Off, 70% illumination	80 mA
Operating, WiFi Off, 0% illuminationPower	25 mA
Off, logger still active	22 mA

## Resolution

Current (A)	±0,1 A (1%)
Voltage (V)	±0,1 A (1%)

## Range

Voltage inputs	0 - 75V DC
Ohmmeter	0 - 65535 Ohm

## Wi-Fi

Radio Frequency Band	2,4 GHz
----------------------	---------

## Dimensions with connector

Nereide 2 - Control Panel	210 x 210 x 40 mm
---------------------------	-------------------

## Connectivity

Batteries	6
Shunts	24
Temperature sensors	10
Tank level sensors	14
Inclinometer sensors	2
Smartphone application	2
SAC05	10
SPU303	10
SRB518/SRB530	10
Logger Capacity	up to 3 years

## Switches

Switches (left & right side)	18 + 1 (power) = 19
------------------------------	---------------------

## Output

2x USB 3.0	1 A
------------	-----

## Power consumption at 5V

# SRB53

## Operating

SRB530	12V DC
Bilge pumps	12V DC
Remote switches	12V DC
Temperature range	-20 - +70 °C

## Power consumption at 12 V

SRB530	10mA
--------	------

## Channels

Remote switch	5x
Bilge pump	3x

## Maximum current

Remote switch	8 A
Bilge pump	20 A

## Additional connectivity

Up to	
SiCAN	1
SiCOM	2

## Dimensions

SBRU53	180 x 81 x 40 mm
--------	------------------

# SPU304

## Operating

SPU-303	8 - 22V DC
Temperature range	-20 - +70 °C

## Power consumption at 12 V

SiCAN	10 mA
NMEA 2K	0,6 mA

## Switching channels

30x Switch channel with standard mini fuse - manual relay override	20 A
1x Power channel (Main switch ON/OFF)	30 A
All channels simultaneously	100 A

## Maximum current

## Additional connectivity

Up to	
SiCAN	1
NMEA 2K	1
SiCOM	2

## Dimensions

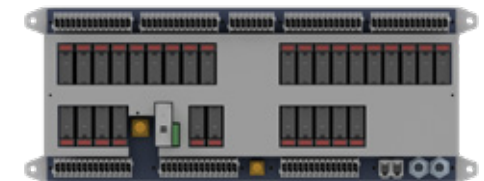
SPU-303	410 x 169 x 40 mm
---------	-------------------



**AC Distribution Unit SAC05**  
with Motorized Automatic Circuit Breakers



**Remote Switch and Bilge Pump Unit SBRU53**

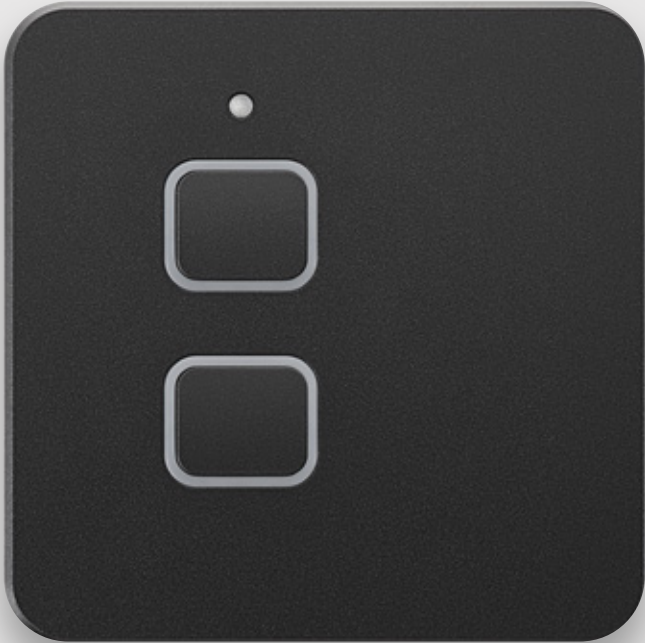


**DC Distribution Unit SPU304**  
with Manual Override Switches and Channel Current Monitoring

# LIGHT SWITCH

DIGITAL ANODISED ALUMINUM LIGHT SWITCHES  
WITH INTEGRATED DIMMERS

<b>Operating</b>	<b>Light Switch</b>
Voltage range	0 - 16 VDC
Outputs	2
Maximum load (Amps per Output)	5A
PWM - Pulse Width Modulation (Default)	12V, 400Hz
<b>Power Consumption - double switch - no load</b>	
2x Light switch	5mA to 20mA
<b>Installation and Dimension</b>	
Dimensions (width x height x depth)	60mm x 60mm x 42mm





S I M A R I N E

Simarine, based in the heart of Europe in Slovenia, is a product company developing and producing advanced solutions in the field of marine and caravan electronics. Our company consists of experienced and dedicated team members.

In cooperation with renowned partners from Europe, North America, Asia, and Oceania, we strive to set new standards in the field of the marine and caravan in terms of functionality, design, connectivity and ease of use. Meeting the highest demands of our end users with uncompromised quality, high-quality materials, and products built in detail. Our goal is to develop and produce premium quality products, that are brilliantly simple to use and can blend perfectly into the most elegant of environments. With that idea in mind, we design and develop all our products for yachts, boats, and caravans.

**Have questions about our products? About potential partnerships?**

Then contact us, we reply in super-fast speed.

W

E

O

R

D

W

**[www.simarine.net](http://www.simarine.net)**  
**[info@simarine.net](mailto:info@simarine.net)**

**SIMARINE d.o.o**  
Ulica škofa Maksimilijana Držečnika 6  
2000 Maribor  
Slovenia, EU







S I M A R I N E

[www.simarine.net](http://www.simarine.net)