

CONTACT :



DEALER
CONTACT
INFORMATION

SCAN FOR TECHNICAL SPECIFICATIONS



MG SMARTCONNECT

RELATED MG PRODUCTS

HE Series

RS Series

LFP Series

Master LV & HV

MG SmartConnect





MG SmartConnect

The MG SmartConnect is a battery system which includes one or more SmartConnect batteries and the SmartLink Connect. This complete battery system is specifically designed for low voltage systems. The design and technology is based on our proven line of batteries in combination with the safest and most reliable BMS in the market.

FEATURES

- ▶ Built-in battery management system
- ▶ Lead-acid replacement
- ▶ Easy installation
- ▶ Extended cycle life
- ▶ Plug and Play: Automatic configuration
- ▶ High charge and discharge rate
- ▶ Unlimited parallel configuration

The MG SmartConnect provides a reliable and compact battery system, suitable for small installations. Use the SmartConnect battery system for example in your camper, boat or car.

COMPLETE & COMPACT

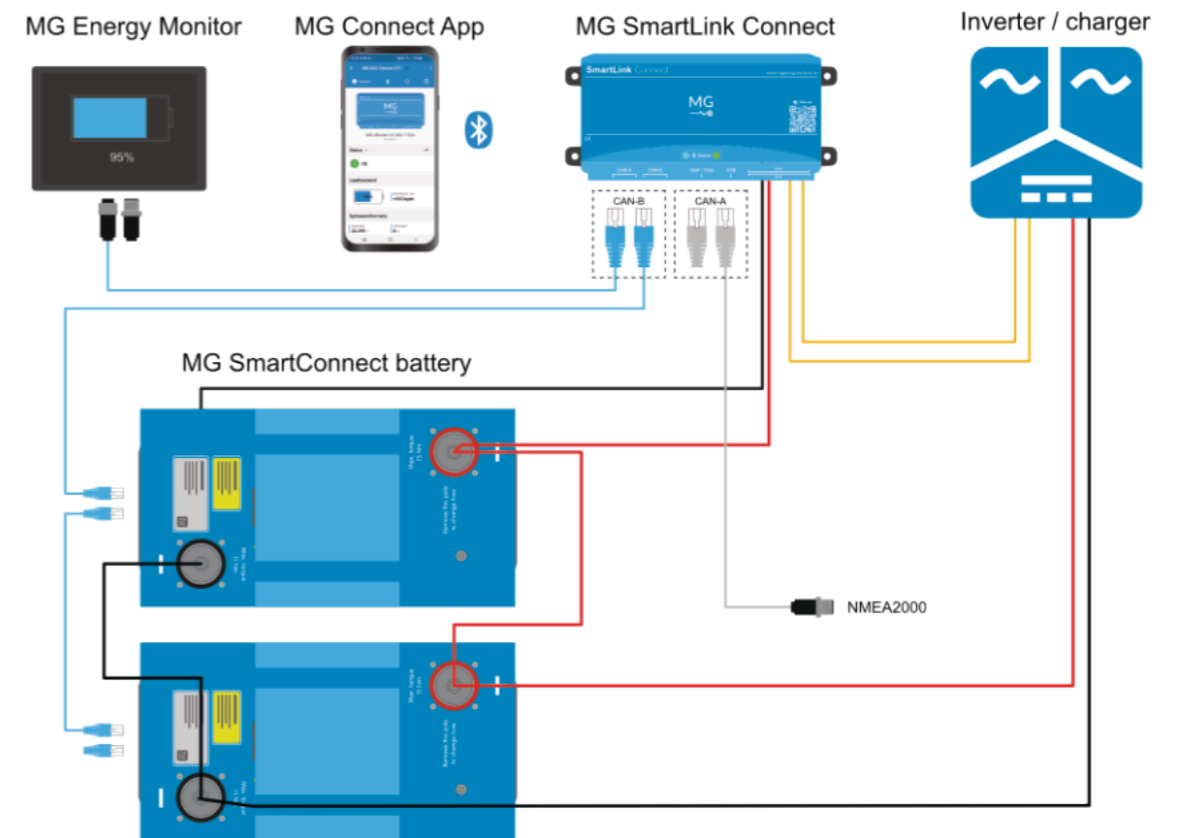
SMARTCONNECT BATTERY

The SmartConnect battery is the most intelligent lithium-ion battery available. This stand-alone MG battery is equipped with internal current sensors, a safety-contactor, pre-charge circuit and internal fuse. The latest lithium-ion chemistry in combination with the SmartConnect technology makes the battery lightweight and compact. This is especially an advantage for the smaller battery applications.

SMARTLINK CONNECT

The SmartLink Connect is the external battery management controller, which monitors and controls all batteries in the system. It gathers and combines all battery and communication data in the MG battery system. It transmits the collected data over CAN-Bus to make it available for third party devices. The SmartLink Connect detects the state of the system, including warnings and errors. Additionally, the SmartLink provides the necessary controls to start, stop and reset the entire battery system when needed.

SMARTCONNECT SYSTEM EXAMPLE



MG BATTERY SYSTEM

A SmartConnect system consists of the following

One or multiple SmartConnect battery modules



One SmartLink Connect



SCAN FOR TECHNICAL SPECIFICATIONS



ENERGY MONITOR

The MG Energy Monitor is a fast and responsive touchscreen display that shows the status of your MG lithium-ion battery system. Scrolling through the status pages and changing settings is easily done by touch. This display is for local monitoring. It has Wi-Fi capabilities to communicate with the MG Energy Portal for remote monitoring.

MG CONNECT APP

The bluetooth connection makes it possible to monitor and control your battery system with your smartphone or tablet. Connect with the MG Connect app and get insight into the battery status and energy consumption. It is also possible to change settings, read the event log and update to the latest firmware.