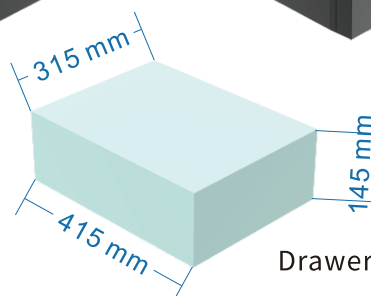
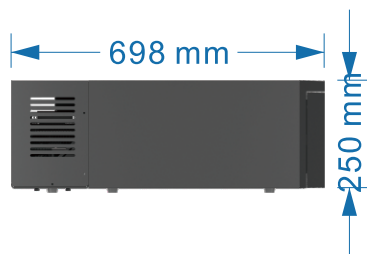
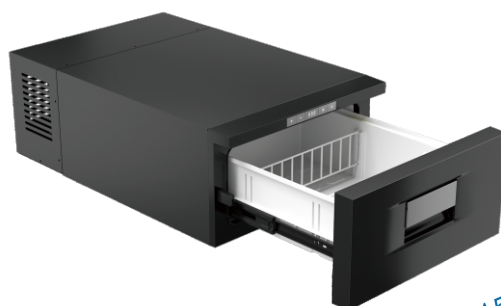


Model:D30 (32 Quarts)

Stackable design



Drawer volume



D30 drawer refrigerator is designed to fit into the tightest spaces, such as the back of your 4-wheel drive, on a boat or in smaller RVs. The fridge turns any unused nook, such as the space under a seat, into a useful 30 L (1.06 cu. ft.) freezer. The D30 drawer refrigerator provides a very energy efficient, flexible solution for keeping drinks cold or foods frozen. It's built tough with a steel cabinet and a removable drawer for easy cleaning. D30 also has an easy to use digital control panel, allowing you to set your desired temperature. Gliding drawers make it a breeze to open and close the fridge.

Feature

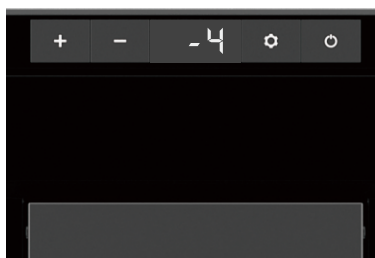
- ❄️ **FREEZES WITHOUT ICE:** -4°F(-20°C) to 68°F(20°C) powerful chilling performance.
- ❄️ **CAR BATTERY PROTECTION:** With temperature memory function and three stages battery protection system prevents vehicle run out of battery.
- ❄️ **Specific parts:** Removable wire rack, digital display touch control panel, easy-lock door latch, protective foot pad.
- ❄️ **High performance:** Name brand compressor offers superior cooling experience.
- ❄️ **Fit anywhere:** Car/Jeep/Truck/Home/Dorm/Cottage/Garage/RV/Boat/Outdoor (DC/AC).
- ❄️ **Rugged design:** Shockproof and durable design for handling rocky road. Incline Operation up to 45° off level in short time. Quiet operation: Less than 45db, like living in quiet suburb.
- ❄️ **ENERGY SAVING (MAX & ECO MODE):** Two different modes can be adjusted as needed. The compressor will stop operating when the freezer reaches the set temperature. The compressor will restart to operating when the temperature in the box has risen a few degree Fahrenheit.
- ❄️ **Accessories:** Comes with full set of accessories such as DC power cable to connect with 12 volt/24 volt power source, AC to DC adapter to connect with 100~240 Volt AC power source.



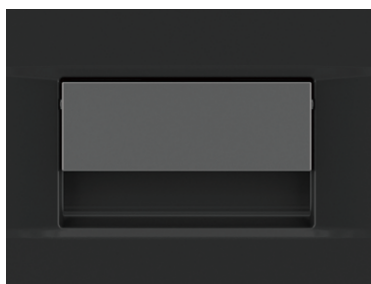
MODEL:	D30
POWER SUPPLY:	12/24VDC,100-240VAC
TOTAL CAPACITY:	30L/32Quarts
FRIDGE DIMENSION(mm) (D x W x H inch):	698*440*250 mm 34 7/8 * 17 * 15 7/8 inch
PACKING SIZE(mm) (D x W x H inch):	758 X 500X 310 mm 29 7/8* 19 11/16 * 12 1/4 inch
NET WEIGHT	19.8kg/53lbs
GROSS WEIGHT	21.8kg/57.3lbs
FRIDGE/FREEZER (COMBINATION):	-20~-20°C (-4~-68°F)
FCL QUANTITY:	200/260/370 (20'/40'/40'HQ)
RATED CURRENT:	DC 1.2A/0.5A AC 5.0A-2.5A
RATED POWER INPUT:	60W
NOISE LEVEL:	<45dB



Full-access drawer



LCD touch control panel



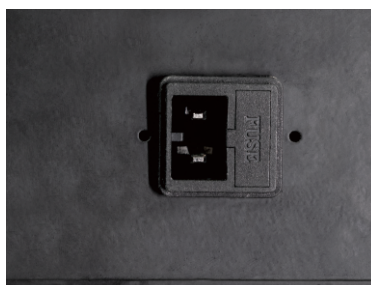
Easy-lock door latch



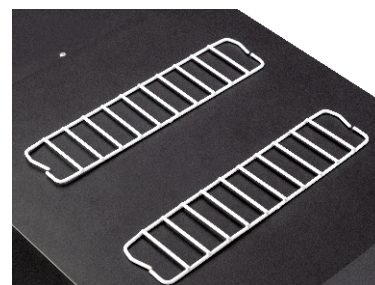
Vent cover



Removable drawer



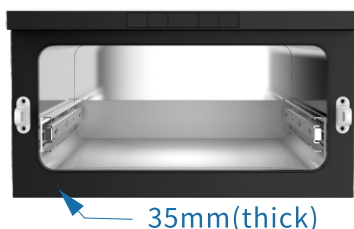
Car/home use



Flexible wire rack



Secure door lock system



Fat foam insulation



Solid outer casing (steel)